

# **GAMCO INVESTORS, INC.**

A Delaware Corporation

249 Royal Palm Way, Palm Beach, FL 33480

---

Telephone: (561) 671-2100  
Website: <https://www.gabelli.com/>  
Email: [info@gabelli.com](mailto:info@gabelli.com)

---

Federal EIN: 13-4007862  
SIC code: 6211

## **Issuer's Annual Report** **For the year ended December 31, 2025**

Indicate the number of shares outstanding of each of the Issuer's classes of Common Stock, as of the end of the previous reporting period and the latest practical date.

<u>Class</u>	<u>Outstanding at September 30, 2025</u>	<u>Outstanding at February 28, 2026</u>
Class A Common Stock, \$0.001 par value (OTCQX: GAMI)	3,137,813	2,593,693
Class B Common Stock, \$0.001 par value	18,982,463	18,982,463

Indicate by check mark whether the company is a shell company (as defined in Rule 405 of the Securities Act of 1933 and Rule 12b-2 of the Exchange Act of 1934):

Yes  No

Indicate by check mark whether the company's shell status has changed since the previous reporting period:

Yes  No

Indicate by check mark whether a change in control of the company has occurred over this reporting period:

Yes  No

**GAMCO Investors, Inc. is responsible for the content of this Annual Report. The securities described in this document are not registered with, and the information contained in this report has not been filed with, or approved by, the U.S. Securities and Exchange Commission.**

# GAMCO INVESTORS, INC. AND SUBSIDIARIES

## INDEX

	<u>Page</u>
<b>Part A: General Company Information</b>	3
Exact name of the issuer	
Address of the issuer's principal executive offices	
Jurisdiction and date of the issuer's incorporation	
<b>Part B: Share Structure</b>	4
The exact title and class of securities outstanding	
Par or stated value and description of the security	
The number of shares outstanding for each class of securities authorized	
Purchases of equity securities by the issuer and affiliated purchasers	
The name and address of the transfer agent	
<b>Part C: Business Information</b>	7
The nature of the issuer's business	
The nature of products or services offered	
The nature and extent of the issuer's facilities	
<b>Part D: Management Structure and Financial Information</b>	
Company Insiders (Officers, Directors, and Control Persons)	32
Financial information for the issuer's most recent fiscal period and two preceding fiscal years	32
Management's Discussion and Analysis	63
The name, address, telephone number, and email address of outside providers that advise the issuer on matters relating to operations, business development, and disclosure	71
<b>Part E: Issuance History</b>	
List of securities offerings and shares issued for services in the past two years	72
<b>Part F: Exhibits</b>	73
Material Contracts	
Articles of Incorporation and Bylaws	
Issuer's Certifications	

## PART A: GENERAL COMPANY INFORMATION

The name of the issuer is GAMCO Investors, Inc.

Unless indicated otherwise, or the context otherwise requires, references in this report to “GAMCO Investors, Inc.,” “Gabelli,” “the Company,” “the Firm,” and “GAMI” or similar terms are to GAMCO Investors, Inc., its predecessors, and its subsidiaries.

### Company Description

Gabelli (OTCQX: GAMI), established in 1977 and incorporated under the laws of Delaware, is a widely-recognized provider of investment advisory services to 27 open-end funds, 13 United States (“U.S.”) closed-end funds and one United Kingdom limited investment company (collectively, “closed-end funds”), 8 actively managed exchange traded funds (“ETFs”), one société d’investissement à capital variable (“SICAV”), and approximately 1,900 institutional and private wealth management (“Institutional and PWM”) investors principally in the U.S. The Company’s revenues are based primarily on the levels of assets under management (“AUM”) and fees associated with the various investment products.

In 1977, Gabelli launched its well-known All Cap Value equity strategy, Gabelli Value, in a separate account format and in 1986 entered the mutual fund business. Today, Gabelli offers a diverse set of client solutions across asset classes (e.g. Equities, Debt Instruments, Convertibles, non-market correlated Merger Arbitrage), regions, market capitalizations, sectors (e.g. Gold, Utilities) and investment styles (e.g. Value, Growth). Gabelli serves a broad client base, including institutions, intermediaries, offshore investors, private wealth, and direct retail investors.

The investment advisory business is conducted principally through the following subsidiaries: Gabelli Funds, LLC (open-end funds, closed-end funds, actively managed ETFs, and SICAV, collectively, the “Funds”) (“Gabelli Funds”) and GAMCO Asset Management Inc. (Institutional and PWM) (“GAMCO Asset”). The distribution of open-end funds and actively managed ETFs are conducted through G.distributors, LLC (“G.distributors”), the Company’s broker-dealer subsidiary.

On May 1, 2025, Gabelli completed the acquisition of the management contracts of 4 open-end funds (the “Gabelli-Keeley Funds”) and approximately 500 separately managed accounts (“Gabelli-Keeley SMAs”) from Keeley-Teton Advisors, LLC (“Keeley”), a wholly-owned subsidiary of Teton Advisors, Inc. (“Teton”). The Chicago-based Keeley research, portfolio management, and client service teammates have joined Gabelli and continue to manage and service these assets totaling approximately \$1.0 billion.

The principal executive office and principal place of business is located at 249 Royal Palm Way, Pam Beach, FL 33480.

Telephone: (561) 671-2100

Website: <https://www.gabelli.com/>

Email: [info@gabelli.com](mailto:info@gabelli.com)

Jurisdiction: Delaware (active), incorporated October 14, 2013

## PART B: SHARE STRUCTURE

There are two classes of Gabelli's common stock: class A ("Class A Stock") and class B ("Class B Stock"), each class with par value of \$0.001. Class A Stock trades on the OTCQX market under the symbol GAMI (CUSIP: 361438104) and Class B Stock does not trade publicly. The following table shows summary information on each class of securities outstanding as of December 31, 2025, 2024, and 2023.

Class A Stock	December 31, 2025	December 31, 2024	December 31, 2023
Number of shares authorized	5,600,000	5,600,000	100,000,000
Number of shares outstanding	3,033,942	3,918,362	5,894,276
Number of shares freely tradable (public float)	2,356,429	2,911,443	3,128,029
Total number of holders	122	128	135

Class B Stock	December 31, 2025	December 31, 2024	December 31, 2023
Number of shares authorized	20,000,000	20,000,000	25,000,000
Number of shares outstanding	18,982,463	19,011,934	19,011,934
Number of shares freely tradable (public float)	-	-	-
Total number of holders	16	17	17

At the Annual Meeting of Shareholders held on July 10, 2024, the following changes to the Company's authorized stock were approved: i) the Class A shareholders, voting together as a single class, approved an amendment to the Company's Amended and Restated Certificate of Incorporation ("Amended Certificate") to decrease the authorized number of shares of Class A Stock from 100,000,000 to 5,600,000; ii) the Class B shareholders, voting together as a single class, approved an amendment to the Company's Amended Certificate to decrease the authorized number of shares of Class B Stock from 25,000,000 to 20,000,000; and iii) the Class A and Class B shareholders, voting together, approved an amendment to the Company's Amended Certificate to eliminate the authorized shares of preferred stock. The Amended Certificate has been filed with the Delaware Division of Corporations with an effective date of July 22, 2024.

The number of shares freely tradable may include shares held by stockholders owning 10% or more of our Class A Stock. These shareholders may be considered "affiliates" within the meaning of Rule 144 and their shares may be "control shares" subject to the volume and manner of sale restrictions under Rule 144. Gabelli's board of directors (the "Board of Directors") has authorized the exchange of Class B Stock for Class A Stock on a one for one basis.

As of February 28, 2026, there were 122 Class A stockholders of record and 16 Class B stockholders of record.

The initial public offering ("IPO") on the New York Stock Exchange ("NYSE") under the symbol GBL was in February 1999. Gabelli voluntarily delisted from the NYSE and began trading on the OTCQX under the new symbol GAMI as of October 7, 2022. Gabelli voluntarily deregistered with the U.S. Securities and Exchange Commission ("SEC") as of December 27, 2022.

### *Voting Rights*

The holders of Class A Stock and Class B Stock have identical rights except that (i) holders of Class A Stock are entitled to one vote per share, while holders of Class B Stock are entitled to ten votes per share, on all matters to be voted on by shareholders in general, and (ii) holders of Class A Stock are not eligible to vote on matters relating exclusively to Class B Stock and vice versa.

### *Stock Award and Incentive Plan*

The Company maintains a stock award and incentive plan approved by the shareholders (the "Plan"), which is designed to provide incentives that will attract and retain individuals key to the success of Gabelli through direct or indirect ownership of our common stock. A maximum of 7.5 million shares of Class A Stock have been reserved for issuance under the Plan by a committee of the Board of Directors responsible for administering the Plan ("Compensation Committee"). Benefits under the Plan may be granted in any one or a combination of stock options, stock appreciation rights, restricted stock, restricted stock units, stock awards, phantom stock awards, dividend equivalents, and other stock or cash based awards. Under the Plan, the Compensation Committee may grant restricted stock awards ("RSAs"), each of which entitles the grantee to one share of Class A Stock subject to restrictions and is treated as an equity award under U.S. generally accepted accounting principles ("GAAP"), phantom RSAs, each of which entitles the grantee to the cash value of one share of Class A Stock subject to restrictions and is treated as a liability award under GAAP, and either incentive or

nonqualified stock options, with a term not to exceed ten years from the grant date and at an exercise price that the Compensation Committee may determine, which were recommended by the Company's Executive Chairman who did not receive any awards.

As of December 31, 2025, 2024, and 2023, there were 1,305,400, 1,077,860, and 748,800, respectively, phantom RSAs outstanding with weighted average grant prices per phantom RSA of \$22.69, \$22.66, and \$21.85, respectively. As of December 31, 2025, 2024, and 2023, there were 10,000 stock options outstanding with an exercise price of \$25.55.

The following table shows information regarding outstanding options and shares reserved for future issuance under our equity compensation plans as of December 31, 2025.

Plan Category	Number of Securities to be Issued upon Exercise of Outstanding Options, Warrants and Rights	Weighted-Average Exercise Price of Outstanding Options, Warrants and Rights
Equity compensation plans approved by security holders:		
Stock options	10,000	\$ 25.55
Restricted stock awards	-	n/a
Total	10,000	\$ 25.55

The number of securities remaining available for future issuance under equity compensation plans (excluding securities reflected in the first column above) is 1,713,685.

#### *Stock Repurchase Program*

In March 1999, the Board of Directors established a stock repurchase program (the "Stock Repurchase Program") to grant management the authority to repurchase shares of Class A Stock. The Stock Repurchase Program underscores the Company's confidence in its long-term strategy and commitment to delivering value to shareholders. The authorization does not require the repurchase of shares or of a specific number of shares. Decisions to repurchase shares or suspend the program will be made at the Company's discretion based on a variety of factors, including ongoing assessments of the capital needs of the business, share price, trading volumes, and general market conditions. Since establishing the Stock Repurchase Program, the Board of Directors has authorized additional share repurchases, including increases of 500,000 shares on both May 7, 2024 and August 6, 2024, 477,877 shares on February 4, 2025, and 500,000 on November 7, 2025. On December 16, 2024, the Board of Directors authorized the buyback of 1,150,000 shares from Associated Capital Group, Inc. ("AC"), an affiliated entity. At December 31, 2025, the Company has approximately 1,099,080 shares remaining under its existing share repurchase authorization. The Stock Repurchase Program is not subject to an expiration date.

The following table provides information regarding purchases of Class A Stock made by or on behalf of the Company or any affiliated purchaser during the year ended December 31, 2025:

Period	Total Number of Shares Purchased (1)	Average Price Paid Per Share	Total Number of Shares Purchased as Part of Publicly Announced Plans or Programs (1)	Maximum Number of Shares That May Yet Be Purchased Under the Plans or Programs
1/01/25 - 1/31/25	12,971	\$ 23.95	12,971	1,022,123
2/01/25 - 2/28/25	477,722	24.28	477,722	1,022,278
3/01/25 - 3/31/25	9,017	23.78	9,017	1,013,261
4/01/25 - 4/30/25	19,056	20.89	19,056	994,205
5/01/25 - 5/31/25	21,641	22.87	21,641	972,564
6/01/25 - 6/30/25	33,084	24.31	33,084	939,480
7/01/25 - 7/31/25	41,301	24.22	41,301	898,179
8/01/25 - 8/31/25	51,935	23.78	51,935	846,244
9/01/25 - 9/30/25	143,293	23.74	143,293	702,951
10/01/25 - 10/31/25	39,432	23.46	39,432	663,519
11/01/25 - 11/30/25	20,736	24.87	20,736	1,142,783
12/01/25 - 12/31/25	43,703	24.81	43,703	1,099,080
Totals	913,891	24.06	913,891	

(1) On trade date basis.

### *Dividends*

The declaration of dividends by Gabelli is subject to the discretion of our Board of Directors. Our Board of Directors will consider such matters as general business conditions, our financial results, capital requirements, contractual, legal and regulatory restrictions on the payment of dividends, and such other factors as our Board of Directors may deem relevant.

As of December 31, 2025, since the IPO, we have returned to shareholders \$2.3 billion in total, of which \$1.0 billion was in the form of the spin-offs of AC and Teton, \$626 million was through our stock buyback program, and \$653 million was from dividends, in addition to \$82 million to charities.

During 2025, 2024, and 2023, the Company declared regular cash dividends of \$0.34, \$0.16, and \$0.16, respectively, per share to shareholders of Class A Stock and Class B Stock totaling \$7.6 million, \$3.8 million, and \$4.1 million, respectively. During 2024, the Company declared special dividends of \$0.20 per share in May and \$2.00 per share in September to shareholders of Class A Stock and Class B Stock totaling \$53.4 million.

On February 3, 2026, the Board of Directors declared its regular quarterly dividend of \$0.10 per share to shareholders of Class A Stock and Class B Stock payable on March 31, 2026 to shareholders of record on March 17, 2026.

### *Transfer Agent*

The name and address of the transfer agent is:      Computershare  
150 Royall Street, Suite 101, Canton, MA 02021  
(800) 564-6253

Computershare is registered under the Securities Exchange Act of 1934 (the “Exchange Act”) and regulated by the SEC.

## PART C: BUSINESS INFORMATION

### CAUTIONARY STATEMENT REGARDING FORWARD-LOOKING STATEMENTS

Our disclosure and analysis in this Annual Report contains some forward-looking statements. Forward-looking statements give our current expectations or forecasts of future events. You can identify these statements because they do not relate strictly to historical or current facts. They use words such as “anticipate,” “estimate,” “expect,” “project,” “intend,” “plan,” “believe,” “will,” “should,” “may,” and other words and terms of similar meaning. They also appear in any discussion of future operating or financial performance. In particular, these include statements relating to future actions, future performance of our products, expenses, the outcome of any legal proceedings, and financial results. Although we believe that we are basing our expectations and beliefs on reasonable assumptions within the bounds of what we currently know about our business and operations, there can be no assurance that our actual results will not differ materially from what we expect or believe. Some of the factors that could cause our actual results to differ from our expectations or beliefs include, without limitation: the adverse effect from a decline in the securities markets that adversely affects our assets under management; a decline in the performance of our products; a general downturn in the economy; changes in government policy or regulation; changes in our ability to attract or retain key employees (“teammates”); and unforeseen costs and other effects related to legal proceedings or investigations of governmental and self-regulatory organizations. We are providing these statements as permitted by the Private Litigation Reform Act of 1995. Our actual results and condition could differ materially from those implied or expressed in the forward-looking statements for any reason, including the factors set forth in “Risk Factors” later in Part C of and elsewhere in this Annual Report. We do not undertake to update publicly any forward-looking statements if we subsequently learn that we are unlikely to achieve our expectations or if we receive any additional information relating to the subject matters of our forward-looking statements.

### BUSINESS

#### (Y)our Business

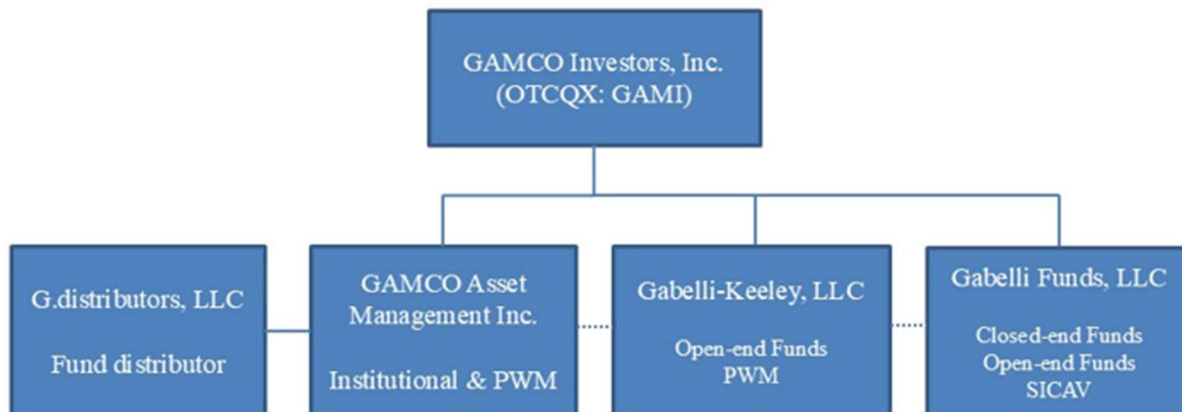
Gabelli (OTCQX: GAMI), established in 1977 and incorporated under the laws of Delaware, is a widely-recognized provider of investment advisory services to 27 open-end funds, 14 closed-end funds, 8 actively managed ETFs, one SICAV, and approximately 1,900 Institutional and PWM investors principally in the U.S. The Company’s revenues are based primarily on the levels of AUM and fees associated with our various investment products.

In 1977, Gabelli launched its well-known All Cap Value equity strategy, Gabelli Value, in a separate account format and in 1986 entered the mutual fund business. Today, Gabelli offers a diverse set of client solutions across asset classes (e.g. Equities, Debt Instruments, Convertibles, non-market correlated Merger Arbitrage), regions, market capitalizations, sectors (e.g. Gold, Utilities) and investment styles (e.g. Value, Growth). Gabelli serves a broad client base, including institutions, intermediaries, offshore investors, private wealth, and direct retail investors.

The investment advisory business is conducted principally through the following subsidiaries: Gabelli Funds (open-end funds, closed-end funds, actively managed ETFs, and SICAV) and GAMCO Asset (Institutional and PWM). The distribution of open-end funds and actively managed ETFs are conducted through G.distributors, the Company’s broker-dealer subsidiary.

#### Organizational Chart

Below is the abbreviated organizational chart of the Company illustrating the subsidiaries with key operations:



Our AUM are organized into three groups:

- **Open and Closed-End Funds:** We provide advisory services to 27 open-end funds, 14 closed-end funds, and 8 actively managed ETFs under the Gabelli and GAMCO brands (collectively, the “Funds”). As of December 31, 2025, the Funds had \$23.0 billion of AUM. Additionally, we provide administrative services to 4 open-end funds under the TETON Westwood brand, with AUM of \$0.3 billion on December 31, 2025.
- **Institutional and Private Wealth Management:** We provide advisory services to a broad range of investors, including corporate retirement plans, foundations, endowments, jointly-trusted plans and public funds, private wealth clients and also serve as sub-advisor to third party investment funds including registered investment companies. Portfolios may be customized to comply with client-specific guidelines and risk profiles. As of December 31, 2025, Institutional and PWM had \$11.8 billion of AUM.
- **SICAV:** We provide advisory services to one SICAV under the GAMCO brand, the GAMCO International SICAV. The SICAV has three sub-fund strategies: the GAMCO Merger Arbitrage Fund, which is sub-advised by AC and had \$527 million in AUM as of December 31, 2025; and the GAMCO All Cap Value Fund and the GAMCO Convertible Securities Fund, which are advised by Gabelli and had \$10 million of AUM as of December 31, 2025.

Portfolio managers oversee our AUM and are supported by our research analyst teammates who have accumulated compound knowledge across numerous industries. Our research team, located in the U.S. and abroad, has an average of 15 years of industry experience.

Our fiscal year ends on December 31. The principal executive office is located at 249 Royal Palm Way, Palm Beach, FL 33480. Our telephone number is (561) 671-2100. We post or provide a link on our website ([www.gabelli.com](http://www.gabelli.com)) to the following filings as soon as reasonably practicable after they are electronically filed with or furnished to the OTC Markets (“OTCIQ”): our Annual Report, Quarterly Reports, Current Reports, and any amendments to those reports filed or furnished. All such filings on our website are available free of charge.

GAMI is a holding company incorporated in April 1998 in advance of our IPO in February 1999. Prior to December 29, 2025, GGCP Holdings, LLC (“GGCP Holdings”), a subsidiary of GGCP Inc. (“GGCP”), which is majority-owned by Mr. Mario J. Gabelli (“Mr. Gabelli”), owned a majority of the outstanding shares of the Company’s Class B Stock. On December 29, 2025, the GAMI shares owned by GGCP Holdings were transferred to GGCP. On January 14, 2026, the GAMI shares were transferred from GGCP to a newly created LLC, GAMCO Gabelli Asset Management Company LLC (“GGAM”). GGAM is managed by GAMCO Investors Manager LLC and majority owned and controlled by Mr. Gabelli. As of December 31, 2025, such ownership by GGCP represented approximately 92% of the combined voting power of the outstanding common stock and approximately 80% of the equity interest. AC, which was spun-off from GAMI on November 30, 2015 and is publicly traded on the OTCQX under the ticker symbol ACGP, owned 351,648 shares of Class A Stock as of December 31, 2025, representing less than 1% of the combined voting power and approximately 2% of the equity interest of GAMI. AC is majority-owned by GGCP, which is also majority owned by Mr. Gabelli.

At the IPO in February 1999, 6 million GAMI shares were offered at \$17.50 per share and total shares outstanding were 30 million for a market capitalization of \$525 million. Since the IPO, we have returned to shareholders \$2.3 billion in total, comprised of \$1.0 billion in the form of the spin-offs of AC and Teton, \$626 million through our stock buyback program, and \$653 million from dividends. In addition, \$82 million was distributed to charities on behalf of shareholders.

During 2025, we returned \$29.6 million to shareholders through \$7.6 million of dividends and \$22.0 million in stock buybacks.

## **Business Strategy**

Our business strategy targets global growth of the franchise by leveraging our proven asset management strengths, including our brands, long-term performance record, diverse product offerings, and experienced investment, research, and client relationship professionals. To achieve performance and growth in AUM and profitability, we are deploying a strategy which includes several factors:

- **Gabelli Private Market Value (PMV) with a Catalyst™ Investment Approach** has been the underpinning of our business. This methodology has evolved from the value investing principles articulated by Graham & Dodd in 1934 and enhanced by Roger Murray and Bruce Greenwald. Mr. Gabelli’s contribution to their principles was the introduction of the Private Market Value (PMV) with a Catalyst™ value investment methodology in 1979.

Private Market Value (PMV) with a Catalyst™ investing is a research-driven approach based on intensive security analysis. In this process, select stocks are identified with an intrinsic value based on our estimate of current asset value, future growth, and earnings

power that is significantly different from the value reflected in the public market. We then calculate the stock's PMV, defined as the price an informed industrial buyer would likely pay to acquire the business. As part of this process, we generally look for a catalyst: a company specific event or industry-wide phenomena, such as a change in regulations that will help realize returns.

In general, our Institutional and PWM AUM are managed to meet the specific needs and objectives of each client by utilizing investment strategies that are within our areas of expertise: "all cap value", "small cap value", "small and mid (SMID) cap value," and "gold".

- **Gabelli Global Growth Team.** Our investment process begins by identifying the most robust secular growth industries globally. Once attractive markets are identified, businesses within those markets are evaluated for two criteria: low penetration of a large addressable market and competitive advantage. The presence of competitive advantage allows us to derive confidence that the business can grow market share and revenue by increasing the penetration of its addressable market. Competitive advantage can take the form of network effects, customer captivity, or barriers to entry.

We value companies across two dimensions: relative valuation, which is most appropriate for profitable businesses, and discounted cash flow, which is appropriate for companies that are mostly being valued on future expected cash flows. For the latter, generally we evaluate unit economics, e.g. the ratio of lifetime value to customer acquisition cost, to understand the potential profitability of a business at maturity as its growth investments moderate. At the portfolio construction level, we usually incorporate business cycle analysis to manage position sizes and sector exposures.

- **Growing Convertible Presence.** Our convertible team has focused on this unique asset class for decades. Convertibles enable us to invest in companies with an asymmetrical return profile through a combination of equity exposure, income, and seniority in the capital structure. This attractive combination leads to reduced volatility relative to the underlying equity. We work closely with the Gabelli team of analysts and the combination of our strong bottom-up fundamental research culture and convertible expertise creates a differentiated strategy that resonates with investors, benefitting shareholders and clients. AUMs across our convertible products include a number of funds. In 2021, we expanded our convertible presence to Europe through a SICAV structure allowing us to meet demand for a global convertible product.
- **Increasing Presence in Private Wealth Management Market.** Our private wealth management business focuses on client relationships. We believe the firm is well positioned to take advantage of the private wealth management business, given its over four decades history of serving the needs of private high net worth clients, with tax sensitive investment management across a breadth of strategies, long performance history, and reputational standing. Our long-term objective is to deepen client relationships by addressing the holistic needs of new clients over a sole equity management focus.

In recent years, Gabelli has successfully attracted and integrated new teams of RIAs, by providing a strong combination of corporate culture, reputation, and compensation arrangements.

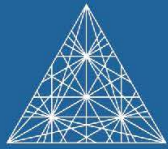
- **Increasing Marketing for Institutional Market.** Our dedicated team of institutional marketing professionals engages with a variety of clients and prospects across institutional and intermediary channels and are responsible for new business development and client relationship management. The institutional sales effort is focused on corporate and public pension plans, unions, endowments, foundations, and financial intermediaries. Gabelli augmented the institutional team with the addition of staff dedicated to marketing to investment consultants as they advise institutional plan sponsors on investment manager selection, asset allocation, and a wide range of investment matters. Expansion of the team serving regional, national, and global consultants provides greater breadth and depth of our firm's engagement and sales efforts with the institutional community.
- **Attracting and Retaining Experienced Professionals.** We offer competitive variable compensation to our staff. The ability to attract and retain highly experienced investment and other professionals with a long-term commitment to our clients has been, and will continue to be, a significant factor in our long-term growth.
- **Launch of actively managed ETFs.** We received approval in 2019 for the Gabelli ETFs Trust. The eight ETFs launched thus far, all listed on the NYSE, combine the characteristics of an actively managed mutual fund with the intra-day pricing and tax benefits of an ETF, including the benefits from §852(b)(6), which allows a fund to deliver appreciated securities to redeeming shareholders without recognizing gains and enables shareholders to defer capital gains until they sell their shares. Five of the ETFs were previously semi-transparent and were converted to fully transparent ETFs:
  - LOPP, the Gabelli Love Our Planet & People ETF, which began trading on February 1, 2021, underscores our belief that an investment focus on the environment is essential to the future of the Planet.

- GGRW, the Gabelli Growth Innovators ETF, which began trading on February 16, 2021, provides an investment opportunity in businesses both enabling and benefitting from digital acceleration.
- GGTL, the Gabelli Global Technology Leaders ETF (formerly, the Gabelli Automation ETF), which began trading on January 5, 2022, focuses on companies that use automation equipment, related technology, software, or processes, and firms that use those services to automate their productivity.
- GABF, the Gabelli Financial Services Opportunity ETF, which began trading on May 10, 2022, focuses on companies in the financial services sector.
- GCAD, the Gabelli Commercial Aerospace & Defense ETF, which began trading on January 4, 2023, focuses on the aerospace and defense sectors.

Additionally, we recently launched three additional fully transparent ETFs:

- GBHI, the Gabelli High Income ETF, which began trading on November 17, 2025, emphasizes companies and securities with the potential for both attractive yields and capital gains, focusing on issuers with strong fundamentals, improving balance sheets, and identifiable catalysts that can unlock value over time.
  - KDVD, the Keeley Dividend ETF, which began trading on December 8, 2025, seeks long-term capital appreciation and current income by investing primarily in small- and mid-cap dividend-paying U.S. equities.
  - GOLS, the Gabelli Opportunities in Live and Sports ETF, which began trading on January 2, 2026, seeks long-term capital appreciation by investing in companies that power the global sports and live entertainment economy.
- **Expanding Fund Distribution.** We continue to expand our distribution network, primarily through national and regional brokerage firms, and have developed additional classes of shares for most of our open-end Funds for sale through these firms and other third party distribution channels. We have increased our wholesale distribution efforts to market the multi-class shares, which are designed to meet the needs of investors seeking advice through financial consultants. We also seek relationships with financial intermediaries that manage discretionary fund models in order to have our funds placed within such models.
  - **Incentive Fees.** As of December 31, 2025, approximately \$215 million of our AUM were managed on a performance fee basis including \$10 million of SICAV assets, \$132 million in The GDL Fund, and \$73 million in the Gabelli Merchant Partners Plc. Incentive fees are recognized at end of measurement period and upon redemption.
  - **Establishing Relationship Offices Internationally.** We have twelve offices, comprised of eight domestic offices located in Charleston, SC; Chicago, IL; Greenwich, CT; Morristown, NJ; Palm Beach, FL; Reno, NV; Rye, NY; and St. Louis, MO, and four international offices located in London, Zurich, Shanghai, and Tokyo. The Zurich office was launched in March 2025 with several analyst teammates who joined our global research team. We will continue to evaluate adding additional offices in order to serve our clients and meet global research requirements.
  - **Hosting of Institutional Investor Symposiums.** We have a tradition of sponsoring institutional investor symposiums that bring together prominent portfolio managers, members of academia, and other leading business professionals to present, discuss, and debate current issues and topics in the investment industry. These symposiums have included:

- 2025 “The Future of Multi-Cancer Screening,” “Empowering Beneficiaries Through Consumerism,” “Developments for Aging in Place,” and “Vaccine Access and Development”
- 2024 “Unlocking the Potential of Surgical Robotics and Artificial Intelligence,” “Interoperability, Digital Transformation and Enhancing Patient Care,” “Advances in Atrial Fibrillation Technology and Treatment,” and “Rule 852(b)(6), the Dynamics and Implications for the Fund Industry”
- 2023 “Reimagining Primary Care,” “Trends in Regenerative Medicine,” and “The Future of Medicare Advantage”
- 2022 “Advances in Diabetes Care,” “Moving Care Closer to the Patient,” and “The Evolution of Wearables and Remote Patient Monitoring”
- 2021 “The Future of Alzheimer’s Care and Treatment,” “New Technologies in Biopharma,” and “Data Mining and Artificial Intelligence in Patient Care”
- 2020 “COVID-19: Vaccines, Therapeutics, and Impact on the Healthcare System”
- 2019 “Healthcare at a Crossroads: What’s the Path Forward?” and “Rule 852(b)(6), the Dynamics and Implications for the Fund Industry”
- 2017 “Digital Evolution in Financial Services”
- 2015 “Capital Allocation – The Tug of War”



GABELLI

Register Now!



2026

GABELLI CONFERENCES

FEBRUARY PUMP, VALVE, & WATER, NEW YORK

The 35<sup>th</sup> Annual Pump, Valve & Water Systems Symposium  
February 27, 2025

MARCH SPECIALTY CHEMICALS, NEW YORK

10<sup>th</sup> Annual Specialty Chemicals Symposium Reflections  
March 20, 2025

APRIL WASTE & ENVIRONMENTAL, NEW YORK

GABELLI 10<sup>th</sup> ANNUAL ENVIRONMENTAL SERVICES, RECYCLING, & SUSTAINABILITY SYMPOSIUM  
APRIL 3, 2025

MAY VALUE INVESTING, OMAHA

"Turn the Page"  
Reflections from the 2023 Annual Meeting  
(BRK.A - \$109,330 - NYSE)  
(BRK.B - \$339.80 - NYSE)

JUNE MEDIA & SPORTS, NEW YORK

17<sup>th</sup> Annual Media & Entertainment Symposium  
June 5, 2025

SEPTEMBER AEROSPACE & DEFENSE, NEW YORK

Gabelli 30<sup>th</sup> Annual Aerospace & Defense Conference  
September 5, 2024

Logos of sponsors: BAAR, ALBANY, ASTROGENES, CRANE, CURTIS-WRIGHT, CRANE, FINE LINE, GIBRALTAR, GIBRALTAR, HANSON, HANSON, KODIN MOOG, MEDCO, MEDCO, MEDCO, MEDCO, VSE, WOODWARD.

SEPTEMBER PFAS, NEW YORK

Gabelli 2<sup>nd</sup> PFAS Symposium  
September 26, 2024  
Reflections

NOVEMBER AUTOMOTIVE, LAS VEGAS

REFLECTIONS & OUTLOOK  
10<sup>th</sup> ANNUAL AUTOMOTIVE SYMPOSIUM  
November 4 - November 9, 2024

PRESENTING COMPANIES

Company	Exchange	ticker	Price	Change	Volume
Aluminum	NYSE	AA	100.00	0.00	1000
Chrysler	NYSE	CHRY	35.00	0.50	5000
Ford	NYSE	F	12.00	0.20	10000
General Motors	NYSE	GM	40.00	0.50	8000
Stellantis	NYSE	STAN	15.00	0.30	15000
Toyota	NYSE	TM	180.00	2.00	2000
Vauxhall	NYSE	VAA	25.00	0.50	3000
Volvo	NYSE	VV	30.00	0.50	4000
BMW	NYSE	BWM	75.00	1.00	6000
Mercedes-Benz	NYSE	MB	100.00	1.50	7000
Hyundai	NYSE	HY	50.00	0.80	9000
Kia	NYSE	KI	45.00	0.70	8000
Nissan	NYSE	NI	35.00	0.40	7000
Subaru	NYSE	SB	40.00	0.60	6000
Jeep	NYSE	J	20.00	0.30	5000
Ram	NYSE	R	15.00	0.20	4000
Dodge	NYSE	D	12.00	0.15	3000
Chrysler Group	NYSE	CHRY	35.00	0.50	5000
Ford Motor	NYSE	F	12.00	0.20	10000
General Motors	NYSE	GM	40.00	0.50	8000
Stellantis	NYSE	STAN	15.00	0.30	15000
Toyota	NYSE	TM	180.00	2.00	2000
Vauxhall	NYSE	VAA	25.00	0.50	3000
Volvo	NYSE	VV	30.00	0.50	4000
BMW	NYSE	BWM	75.00	1.00	6000
Mercedes-Benz	NYSE	MB	100.00	1.50	7000
Hyundai	NYSE	HY	50.00	0.80	9000
Kia	NYSE	KI	45.00	0.70	8000
Nissan	NYSE	NI	35.00	0.40	7000
Subaru	NYSE	SB	40.00	0.60	6000
Jeep	NYSE	J	20.00	0.30	5000
Ram	NYSE	R	15.00	0.20	4000
Dodge	NYSE	D	12.00	0.15	3000

NOVEMBER HEALTHCARE, NEW YORK

Healthcare Symposium  
6<sup>th</sup> Annual  
Gabelli Funds/Columbia Business School

info@gabelli.com | 914-921-5100

- **Hosting of Conferences.** Gabelli Funds sponsors a series of industry conferences, which are well known within their respective industries for the intellectual content and for providing insight into investment decisions made on behalf of our clients.

<u>Conference</u>	<u>Years sponsored</u>
Automotive Aftermarket Symposium	49
Pump, Valve & Water Systems Symposium	35
Aerospace & Defense Symposium	31
Sports & Media Conference	17
Value Investor Conference	16
Specialty Chemicals Symposium	16
Waste & Environmental Services Conference	11
Healthcare Symposium	7
PFAS Symposium	3

- **Capitalizing on Acquisitions, Alliances, and Lift-outs.** We intend to selectively and opportunistically pursue acquisitions, alliances, and lift-outs that broaden our product offerings, add new sources of distribution, and augment organic growth. On August 1, 2010, the clients of Florida-based NMF Asset Management became part of the Institutional and PWM operation of GAMCO Asset. On November 2, 2015, the investment team of Dinsmore Capital, a specialist in convertible bond investing and formerly the manager of The Bancroft Fund and the Ellsworth Growth & Income Fund joined Gabelli Funds. During 2018, the clients of Trevor, Stewart, Burton & Jacobsen and Loeb Partners Management, Inc. joined Gabelli. On May 1, 2025, the Chicago-based Keeley research, portfolio management, and client service teammates joined Gabelli along with their clients.
- **Solutions For Our Wealth Management Clients with Debt Instruments.** We look to increase our competitive ability to attract new clients interested in wealth management and debt instruments. The Gabelli U.S. Treasury Money Market Fund, which has check writing privileges and is not subject to state and local taxes, has an investment objective of high current income consistent with the preservation of principal and liquidity.

We believe that our growth since inception is traceable to the following factors:

- **Industry Fundamentals:** According to data compiled by the U.S. Federal Reserve, the investment management industry has grown faster than more traditional segments of the financial services industry, including the banking and insurance industries. Since GAMI began managing assets for Institutional and PWM clients in 1977, based on data generated by Birinyi Associates, LLC, world equity markets have grown at a 9.7% compound annual growth rate through December 31, 2025 to approximately \$151.0 trillion. The U.S. equity market comprises about \$72.1 trillion, or roughly 48% of world equity markets. We believe that demographic trends and the growing role of money managers in the placement of capital compared to the traditional role played by banks and life insurance companies will result in continued growth of the investment management industry.
- **Long-Term Performance:** We have a superior long-term record of achieving relatively high returns for our Institutional and PWM clients. We believe that our performance record represents a competitive advantage and a recognized component of our franchise.
- **Stock Market Gains:** Since we began managing for Institutional and PWM clients in 1977, our traditional value-oriented Institutional and PWM composite has earned a compound annual return of 14.9% gross and 14.1% net of fees versus a compound annual return of 12.2% for the S&P 500 through December 31, 2025.
- **Widely-Recognized “Gabelli” and “GAMCO” Brand Names:** For much of our history, our CEOs, portfolio managers, investment style, and investment products have been featured in a variety of print and digital media publications, including U.S. and international publications such as *The Wall Street Journal*, *Financial Times*, *Money Magazine*, *Barron’s*, *Fortune*, *Business Week*, *Nikkei Financial News*, *Forbes*, and *Investor’s Business Daily*. We have published *Deals...Deals...and More Deals* written by our investment professionals. It examines the history and current practice of merger arbitrage and has been translated into Japanese, Chinese, Italian, Spanish, and Arabic. *Global Convertible Investing: The Gabelli Way* is a comprehensive guide to effective investing in convertible securities. We most recently published *Merger Masters: Tales of Arbitrage*, which presents revealing profiles of monumentally successful merger investors based on exclusive interviews with some of the greatest minds to practice the art of arbitrage. Our investment professionals also appear on leading financial news programs, including *CNBC*, *Fox*, *Yahoo Finance*, and *Bloomberg*, and we are active on numerous digital platforms, including Gabelli TV on YouTube, Gabelli Funds on LinkedIn, and Twitter (@MarioGabelli and @InvestGabelli), among others. We have launched a podcast series whereby our

portfolio managers and research analysts discuss their views on various industries and topical issues. <https://www.gabelli.com/media/podcast>

- **Diversified Product Offerings:** Since the inception of our investment management activities, we have sought to expand the breadth of our product offerings. We currently offer a wide spectrum of investment products and strategies, including product offerings in U.S. equities, U.S. debt instruments, international equities, and convertible securities.

## Business Description

Our AUM's are clustered in two groups: Funds and Institutional and PWM.

**Funds:** At December 31, 2025, we had \$23.0 billion of AUM in Fund AUM, representing 66.0% of our total AUM. Our equity Funds were \$17.7 billion in AUM on December 31, 2025, 14.9% above the \$15.4 billion on December 31, 2024 and 17.2% above the \$15.1 billion on December 31, 2023. This includes our role as investment advisor to a SICAV with AUM of \$10 million at December 31, 2025, compared to the \$9 million in AUM at December 31, 2024 and \$631 million in AUM at December 31, 2023. During 2024, \$620 million of SICAV AUM was reclassified to Assets Under Administration ("AUA").

### *Open-end Funds*

As of December 31, 2025, we had \$9.4 billion of AUM in 27 open-end equity Funds (including 4 Funds acquired from Keeley during the year ended December 31, 2025) and \$5.4 billion in our Gabelli U.S. Treasury Money Market Fund. We market our open-end Funds primarily through third party distribution programs, including no-transaction fee ("NTF") programs, and have developed additional share classes for many of our funds for distribution through these third party distribution channels. As of December 31, 2025, third party distribution programs accounted for approximately 68% of our AUM in open-end equity funds and approximately 32% of our AUM in open-end equity funds were sourced through direct sales relationships.

### *Closed-end Funds*

We act as investment advisor to 14 closed-end funds, 13 of which trade on the NYSE or its affiliated exchange. These funds cannot be redeemed by the funds' shareholders, except in limited cases. The trading price of the shares is determined by supply and demand in the marketplace and, as a result, the shares may trade at a premium or discount to the net asset value of the fund. The closed-end funds are: Gabelli Equity Trust (GAB), GDL Fund (GDL), Gabelli Multimedia Trust (GGT), Gabelli Healthcare & Wellness<sup>®</sup> Trust (GRX), Gabelli Convertible and Income Securities Fund (GCV), Gabelli Utility Trust (GUT), Gabelli Dividend & Income Trust (GDV), Gabelli Global Utility & Income Trust (GLU), GAMCO Global Gold, Natural Resources & Income Trust (GGN), GAMCO Natural Resources, Gold & Income Trust (GNT), The Gabelli Global Small and Mid Cap Value Trust (GGZ), the Bancroft Fund Ltd. (BCV), and the Ellsworth Growth and Income Fund Ltd. (ECF). We launched the Gabelli Merchant Partners Plc (GMP) in 2017, which trades on the London Stock Exchange. As of December 31, 2025, the 14 closed-end funds had total assets of \$8.2 billion, representing 35.7% of the total assets in our Funds business.

### *ETFs*

We act as the investment advisor to 8 actively managed ETFs, all of which trade on the NYSE or its affiliated exchange. As of December 31, 2025, the 8 ETFs had total assets of \$106 million.

### *SICAV*

We provide investment advisory services to the GAMCO International SICAV, which has two sub-fund strategies: the GAMCO All Cap Value Fund and the GAMCO Convertible Securities Fund. Total AUM in the SICAV was \$10 million at December 31, 2025.

**Institutional and Private Wealth Management:** At December 31, 2025, we had \$11.8 billion of AUM in approximately 1,900 Institutional and PWM accounts (including approximately 500 accounts acquired from Keeley during the year ended December 31, 2025), representing 33.8% of our total AUM. As of December 31, 2025, the PWM clients, generally defined as individuals having minimum investable assets of \$1.0 million, comprised approximately 85% of the total number of Institutional and PWM accounts and approximately \$4.6 billion, or 39%, of the Institutional and PWM AUM. We believe that PWM clients are attracted to us by our returns and the tax efficient nature of the underlying investment process for the taxable portion of their assets. As of December 31, 2025, institutional client accounts comprised approximately 6% of the total number of Institutional and PWM accounts and approximately \$1.5 billion, or 12%, of the Institutional and PWM AUM. As of December 31, 2025, foundation and endowment fund assets comprised approximately 8% of the total number of Institutional and PWM accounts and approximately \$1.2 billion, or 10%, of the Institutional

and PWM AUM. As of December 31, 2025, the sub-advisory clients, where we act as sub-advisor to third party investment funds, comprised approximately 1% of the total number of Institutional and PWM accounts and approximately \$4.6 billion, or 39%, of total Institutional and PWM AUM.

The ten largest Institutional and PWM relationships comprised approximately 47% of GAMCO Asset AUM and 16% of our total AUM as of December 31, 2025, and approximately 36% of GAMCO Asset revenues and 9% of our total revenues for the year ended December 31, 2025. Investment advisory agreements for our Institutional and PWM clients are generally subject to termination by the client without penalty on 30 days' written notice.

## Assets Under Management (in millions)

	Twelve Months Ended December 31,		
	2025	2024	2023
<b>Equities:</b>			
<b>Mutual Funds</b>			
Beginning of period assets	\$ 8,078	\$ 7,973	\$ 8,140
Inflows	1,443	751	711
Outflows	(1,704)	(1,626)	(1,616)
Net inflows (outflows)	(261)	(875)	(905)
Market appreciation (depreciation)	1,713	1,023	772
Fund distributions, net of reinvestment	(46)	(43)	(34)
Total increase (decrease)	1,406	105	(167)
End of period assets	\$ 9,484	\$ 8,078	\$ 7,973
Percentage of total assets under management	27.2%	25.5%	25.6%
Average assets under management	\$ 8,762	\$ 8,173	\$ 8,035
<b>Closed-end Funds</b>			
Beginning of period assets	\$ 7,344	\$ 7,097	\$ 7,046
Inflows	239	281	41
Outflows	(207)	(226)	(130)
Net inflows (outflows)	32	55	(89)
Market appreciation (depreciation)	1,365	700	654
Fund distributions, net of reinvestment	(567)	(508)	(514)
Total increase (decrease)	830	247	51
End of period assets	\$ 8,174	\$ 7,344	\$ 7,097
Percentage of total assets under management	23.4%	23.2%	22.8%
Average assets under management	\$ 7,687	\$ 7,274	\$ 7,058
<b>Institutional &amp; PWM</b>			
Beginning of period assets	\$ 10,700	\$ 10,738	\$ 10,714
Inflows	1,276	340	241
Outflows	(1,839)	(1,701)	(1,739)
Net inflows (outflows)	(563)	(1,361)	(1,498)
Market appreciation (depreciation)	1,662	1,323	1,522
Total increase (decrease)	1,099	(38)	24
End of period assets <sup>(a)</sup>	\$ 11,799	\$ 10,700	\$ 10,738
Percentage of total assets under management	33.8%	33.7%	34.5%
Average assets under management	\$ 11,328	\$ 10,891	\$ 10,670
<b>SICAV</b>			
Beginning of period assets	\$ 9	\$ 631	\$ 867
Inflows	-	-	357
Outflows	-	(2)	(624)
Net inflows (outflows)	-	(2)	(267)
Market appreciation (depreciation)	1	-	31
Reclassification to AUA	-	(620)	-
Total increase (decrease)	1	(622)	(236)
End of period assets	\$ 10	\$ 9	\$ 631
Percentage of total assets under management	0.0%	0.0%	2.0%
Average assets under management	\$ 10	\$ 9	\$ 694
<b>Total Equities</b>			
Beginning of period assets	\$ 26,131	\$ 26,439	\$ 26,767
Inflows	2,958	1,372	1,350
Outflows	(3,750)	(3,555)	(4,109)
Net inflows (outflows)	(792)	(2,183)	(2,759)
Market appreciation (depreciation)	4,741	3,046	2,979
Fund distributions, net of reinvestment	(613)	(551)	(548)
Reclassification to AUA	-	(620)	-
Total increase (decrease)	3,336	(308)	(328)
End of period assets	\$ 29,467	\$ 26,131	\$ 26,439
Percentage of total assets under management	84.5%	82.4%	85.1%
Average assets under management	\$ 27,787	\$ 26,347	\$ 26,457

(a) Includes \$252 million, \$237 million and \$227 million of 100% U.S. Treasury Fund AUM at December 31, 2025, 2024, and 2023, respectively.

**Twelve Months Ended December 31,**

	<b>2025</b>	<b>2024</b>	<b>2023</b>
<b>Debt Instruments:</b>			
100% U.S. Treasury fund			
Beginning of period assets	\$ 5,552	\$ 4,615	\$ 2,462
Inflows	5,300	5,796	5,498
Outflows	(5,712)	(5,122)	(3,536)
Net inflows (outflows)	(412)	674	1,962
Market appreciation (depreciation)	231	263	191
Total increase (decrease)	(181)	937	2,153
End of period assets	\$ 5,371	\$ 5,552	\$ 4,615
Percentage of total assets under management	15.4%	17.5%	14.8%
Average assets under management	\$ 5,575	\$ 5,140	\$ 3,823
<b>Institutional &amp; PWM</b>			
Beginning of period assets	\$ 32	\$ 32	\$ 32
Inflows	-	-	-
Outflows	-	-	-
Net inflows (outflows)	-	-	-
Market appreciation (depreciation)	-	-	-
Total increase (decrease)	-	-	-
End of period assets	\$ 32	\$ 32	\$ 32
Percentage of total assets under management	0.1%	0.1%	0.1%
Average assets under management	\$ 32	\$ 32	\$ 32
<b>Total Debt Instruments</b>			
Beginning of period assets	\$ 5,584	\$ 4,647	\$ 2,494
Inflows	5,300	5,796	5,498
Outflows	(5,712)	(5,122)	(3,536)
Net inflows (outflows)	(412)	674	1,962
Market appreciation (depreciation)	231	263	191
Total increase (decrease)	(181)	937	2,153
End of period assets	\$ 5,403	\$ 5,584	\$ 4,647
Percentage of total assets under management	15.5%	17.6%	14.9%
Average assets under management	\$ 5,607	\$ 5,172	\$ 3,855
<b>Total AUM</b>			
Beginning of period assets	\$ 31,715	\$ 31,086	\$ 29,261
Inflows	8,258	7,168	6,848
Outflows	(9,462)	(8,677)	(7,645)
Net inflows (outflows)	(1,204)	(1,509)	(797)
Market appreciation (depreciation)	4,972	3,309	3,170
Fund distributions, net of reinvestment	(613)	(551)	(548)
Reclassification to AUA	-	(620)	-
Total increase (decrease)	3,155	629	1,825
End of period assets	\$ 34,870	\$ 31,715	\$ 31,086
Average assets under management	\$ 33,394	\$ 31,519	\$ 30,312

The following table sets forth the amount of distributions, net of reinvestment (in millions) to clients in our Funds by year:

	<u>2025</u>	<u>2024</u>	<u>2023</u>
Open-end Funds	\$ 46	\$ 43	\$ 34
Closed-end Funds	567	508	514
Total distributions	<u>\$ 613</u>	<u>\$ 551</u>	<u>\$ 548</u>

Our AUM by style at December 31, 2025 (in millions) was comprised of the following:

	<u>Funds</u>	<u>Institutional &amp; PWM</u>	<u>SICAV</u>	<u>Total</u>
Value	\$ 10,277	\$ 10,986	\$ 5	\$ 21,268
100% U.S. Treasury Fund	5,371	-	-	5,371
Sector-focused	2,793	-	-	2,793
Gold and Natural Resources	1,883	216	-	2,099
Growth	1,545	434	-	1,979
Event-driven	703	171	5	879
Convertibles	457	24	-	481
Total	<u>\$ 23,029</u>	<u>\$ 11,831</u>	<u>\$ 10</u>	<u>\$ 34,870</u>

***Assets Under Administration (AUA)***

*(in millions)*

	<u>As of</u>		
	<u>December 31, 2025</u>	<u>December 31, 2024</u>	<u>December 31, 2023</u>
Mutual Funds	\$ 264	\$ 809	\$ 964
SICAV	527	408	-
Total assets under administration	<u>\$ 791</u>	<u>\$ 1,217</u>	<u>\$ 964</u>

AUA was \$0.8 billion as of December 31, 2025, \$1.2 billion as of December 31, 2024, and \$1.0 billion as of December 31, 2023. During 2025, \$440 million of Mutual Funds was reclassified from AUA to AUM as a result of the acquisition of the management contracts of 4 open-end funds from Keeley. During 2024, \$620 million of SICAV was reclassified from AUM to AUA.

## Summary of Investment Products

We manage assets in the following wide spectrum of investment products and strategies:

### U.S. Equities:

All Cap Value  
Large Cap Value  
Large Cap Growth  
Small-Mid Cap Value  
Small Cap Value  
Micro Cap Value  
Dividend and Income  
Event-Driven Merger Arbitrage  
Actively managed ETFs

### Sector-focused:

Utilities  
Gold  
Natural Resources  
Media  
Healthcare  
Financial Services

### Global and International Equities:

International Growth  
International Small Cap Growth  
Global Growth  
Global Value

### Convertible Securities:

Convertible Securities

### Debt Instruments:

Corporate Bonds  
Government and Agencies  
Asset-backed Securities  
Intermediate-term  
Short-term

## Additional Information on Mutual Funds

Through Gabelli Funds, we act as the investment advisor to all of the Funds.

Shareholders of the open-end Funds are allowed to exchange shares among the same class of shares of the other open-end Funds as economic and market conditions and investor needs change at no additional cost. However, certain open-end Funds impose a 2% redemption fee on shares redeemed within seven days or less after a purchase. We periodically introduce new funds designed to complement and expand our investment product offerings, respond to competitive developments in the financial marketplace, and meet the changing needs of investors.

Our marketing efforts for the open-end Funds are focused on increasing the distribution and sales of our existing funds and creating new products for sale through our distribution channels. We believe that our marketing efforts for the Funds will continue to generate additional revenues from investment advisory fees. After distributing most of our open-end Funds using a variety of direct response marketing techniques, in late 1995 we expanded our product distribution by offering several of our open-end Funds through third party distribution programs, including NTF programs.

In 1998 and 1999, we expanded these efforts to include substantially all of our open-end Funds in third party distribution programs, which have become an increasingly important source of asset growth. As of December 31, 2025, approximately 68% of the \$9.4 billion of open-end equity fund AUM was generated through third party distribution programs, while approximately 32% was attributable to our direct response marketing efforts.

Multi-class shares are available in most of the Funds, and we believe that their use expands the distribution of our open-end Funds into the advised sector of the investment community. Class I shares, no-load shares with higher minimum initial investments and without distribution fees, are available directly through G.distributors or brokers that have entered into selling agreements, and no-load Class AAA shares are available to investors.

In general, distribution through third party programs has greater variable cost components and lower fixed cost components than distribution through traditional direct sales methods. We pay the distribution fees charged by many of the third party distribution programs, although a portion of distribution fees under certain circumstances is payable by the Funds.

We provide investment advisory and management services pursuant to an investment management agreement with each fund ("Fund IMAs"). The Fund IMAs generally provide that we are responsible for the overall investment and administrative services, subject to the oversight of each Fund's board of directors or trustees and in accordance with each Fund's fundamental investment objectives and policies. The Fund IMAs permit us to enter into separate agreements for sub-administrative and accounting services on behalf of the respective Funds.

Our affiliated advisor provides the Funds with administrative services pursuant to the Fund IMAs. Such services include, without limitation, supervision of the calculation of net asset value, preparation of financial reports for shareholders of the Funds, internal accounting, tax accounting and reporting, regulatory filings, and other services. Most of these administrative services are provided through sub-contracts with independent third parties. Transfer agency and custodial services are provided directly to the Funds by independent third parties.

Each of our Fund IMAs may continue in effect from year to year only if specifically approved at least annually by (i) the Fund's board of directors or trustees or (ii) the Fund's shareholders and, in either case, the vote of a majority of the Fund's independent or non-interested directors or trustees who are not parties to the agreement or "interested persons" of any such party, within the meaning of the Investment Company Act of 1940, as amended ("Company Act"). Each domestic Fund may terminate its Fund IMA at any time upon 60 days' written notice by (i) a vote of the majority of the board of directors or trustees cast in person at a meeting called for the purpose of voting on such termination or (ii) a vote at a meeting of shareholders of the lesser of either 67% of the voting shares represented in person or by proxy (if at least 50% of the shares are present at the meeting) or 50% of the outstanding voting shares of such Fund. Each Fund IMA automatically terminates in the event of its assignment, as defined in the Company Act. We may terminate a Fund IMA without penalty on 60 days' written notice.

### **Open-End Fund Distribution**

G.distributors, a wholly-owned subsidiary of GAMI, is a broker-dealer registered under the Exchange Act, and is regulated by the Financial Industry Regulatory Authority ("FINRA"). G.distributors' revenues are derived primarily from the distribution of our open-end Funds. G.distributors distributes our open-end Funds pursuant to distribution agreements with each Fund. It also distributes funds managed by Teton and its affiliates. Under each distribution agreement with an open-end Fund, G.distributors offers and sells such open-end Fund's shares on a continuous basis and pays the majority of the costs of marketing and selling the shares, including printing and mailing prospectuses and sales literature, advertising, maintaining sales and customer service teammates and sales and services fulfillment systems, and payments to the sponsors of third party distribution programs, financial intermediaries, and G.distributors' sales teammates. G.distributors receives fees for such services pursuant to distribution plans adopted under provisions of Rule 12b-1 ("12b-1") of the Company Act. Distribution fees from the open-end Funds are computed daily based on average net assets. For the years ended December 31, 2025, 2024, and 2023, distribution fees from the open-end Funds amounted to \$12.9 million, \$14.4 million and \$17.0 million, respectively, while payments to third-parties for selling the open-end Funds totaled \$14.7 million, \$14.3 million and \$15.5 million, respectively. G.distributors is the principal underwriter for the Funds distributed in multiple classes of shares, which carry either a front-end, back-end, or no sales charge. For the years ended December 31, 2025, 2024, and 2023, underwriting fees and sales charges retained amounted to \$0.8 million, \$0.8 million and \$0.8 million, respectively.

Under the distribution plans, the Class AAA shares of the open-end Funds (except The Gabelli ABC Fund) and the Class A and ADV shares of certain funds pay G.distributors a distribution fee of 0.25% per year on the average daily net assets of the fund. Class C shares have a 12b-1 distribution plan with a distribution fee totaling 1.00%.

G.distributors' distribution agreements with each fund may continue in effect from year to year only if specifically approved at least annually by (i) the Fund's board of directors or trustees or (ii) the Fund's shareholders and, in either case, the vote of a majority of the Fund's board of directors or trustees who are not parties to the agreement or "interested persons" of any such party, within the meaning of the Company Act. Each Fund may terminate its distribution agreement, or any agreement thereunder, at any time upon 60 days' written notice by (i) a vote of the majority of its board of directors or trustees cast in person at a meeting called for the purpose of voting on such termination or (ii) a vote at a meeting of shareholders of the lesser of either 67% of the voting shares represented in person or by proxy (if at least 50% of the shares are present at the meeting) or 50% of the outstanding voting shares of such Fund. Each distribution agreement automatically terminates in the event of its assignment, as defined in the Company Act. G.distributors may terminate a distribution agreement without penalty upon 60 days' written notice.

G.distributors also offers our open-end Fund products through our website, [www.gabelli.com](http://www.gabelli.com), where directly registered investors can access their personal account information and buy, sell, and exchange fund shares. Fund prospectuses, quarterly reports, Fund applications, daily net asset values, and performance charts are all available online.

### **Competition**

We compete with other investment management firms and mutual fund companies, insurance companies, banks, brokerage firms, and other financial institutions that offer products that have similar features and investment objectives. Many of these investment management firms are subsidiaries of large diversified financial companies. Many others are much larger in terms of AUM and revenues and, accordingly, have much larger sales organizations and marketing budgets. Historically, we have competed primarily on the basis

of the long-term investment performance of many of our investment products in addition to brand recognition of the Firm and market awareness of its founder, Mr. Gabelli. We have taken steps to increase our distribution channels, brand consistency and marketing communications, and thought-leadership efforts. Other trends affecting the investment management business include the widespread popularity of index mutual funds and ETFs, which have tax and cost advantages over traditional investment companies.

The market for providing investment management services to Institutional and PWM clients is also highly competitive. Approximately 27% of our investment advisory fee revenue for the year ended December 31, 2025 was derived from our Institutional and PWM business. Selection of investment advisors by U.S. institutional investors is often subject to a screening process and favorable recommendations by investment industry consultants. Many of these investors require their investment advisors to have a successful and sustained performance record, often five years or longer with focus also on one-year and three-year performance records. We have significantly increased our AUM on behalf of U.S. institutional investors since our entry into the institutional asset management business in 1977.

## **Intellectual Property**

Service marks and brand name recognition are important to our business. We have rights to the service marks under which our products are offered. We have registered certain service marks in the U.S. and will continue to do so as new trademarks and service marks are developed or acquired. We have rights to use the “Gabelli” name, the “GAMCO” name, and other names. Pursuant to an assignment agreement, Mr. Gabelli has assigned to us all of his rights, title, and interests in and to the “Gabelli” name for use in connection with investment management services, and mutual funds. However, under the agreement, Mr. Gabelli will retain any and all rights, title, and interests he has or may have in the “Gabelli” name for use in connection with (i) charitable foundations controlled by Mr. Gabelli or members of his family and (ii) entities engaged in private investment activities for Mr. Gabelli or members of his family. In addition, the funds managed by Mr. Gabelli outside GAMI have entered into a license agreement with us permitting them to continue limited use of the “Gabelli” name under specified circumstances.

## **Regulation**

Virtually all aspects of our businesses are subject to various federal, state, and foreign laws and regulations. These laws and regulations are primarily intended to protect investment advisory clients and shareholders of investment funds. Under such laws and regulations, agencies that regulate investment advisors and broker-dealers have broad powers, including the power to limit, restrict or prohibit such an advisor or broker-dealer from carrying on its business in the event that it fails to comply with such laws and regulations. In such an event, the possible sanctions that may be imposed include civil and criminal liability, the suspension of individual employees, injunctions, limitations on engaging in certain lines of business for specified periods of time, revocation of the investment advisor, and other registrations, censures, and fines.

Our business is subject to extensive regulation at the federal, state, and foreign level by the SEC and other regulatory bodies. Certain of our subsidiaries are registered with the SEC under the Investment Advisers Act of 1940, as amended (“Advisers Act”), and the Funds are registered with the SEC under the Company Act. We also have a subsidiary that is registered as a broker-dealer with the SEC and is subject to regulation by FINRA and various states.

The subsidiaries of GAMI that are registered with the SEC under the Advisers Act (Gabelli Funds and GAMCO Asset) are regulated by and subject to examination by the SEC. The Advisers Act imposes numerous obligations on registered investment advisors, including fiduciary duties, disclosure obligations, and record keeping, operational, and marketing requirements. The SEC is authorized to institute proceedings and impose sanctions for violations of the Advisers Act, ranging from censure to termination of an investment advisor’s registration. The failure of an advisory subsidiary to comply with the requirements of the SEC could have a material adverse effect on us.

We derive a substantial majority of our revenues from investment advisory services through our various investment management agreements. Under the Advisers Act, our investment management agreements may not be assigned without the client’s consent. Under the Company Act, advisory agreements with registered investment companies, such as our Funds, terminate automatically upon assignment. The term “assignment” is broadly defined and includes direct as well as assignments that may be deemed to occur, under certain circumstances, upon the transfer, directly or indirectly, of a controlling interest in GAMI.

In its capacity as a broker-dealer, G.distributors is required to maintain certain minimum net capital amounts. These requirements also provide that equity capital may not be withdrawn, advances to affiliates may not be made, and cash dividends may not be paid if certain minimum net capital requirements are not met. G.distributors’ net capital, as defined in Rule 15c3-3 promulgated under the Securities Exchange Act of 1934, as amended, met or exceeded all minimum requirements as of December 31, 2025. As a registered broker-dealer, G.distributors is also subject to periodic examination by FINRA, the SEC, and the states.

Subsidiaries of GAMI are subject to the Employee Retirement Income Security Act of 1974, as amended (“ERISA”), and to regulations promulgated thereunder, insofar as they are “fiduciaries” under ERISA with respect to certain of their clients. ERISA and applicable provisions of the Internal Revenue Code of 1986, as amended (the “Code”), impose certain duties on persons who are fiduciaries under ERISA and prohibit certain transactions involving ERISA plan clients. Our failure to comply with these requirements could have a material adverse effect on us.

Investments by GAMI and on behalf of our Funds and Institutional and PWM clients often represent a significant equity ownership position in an issuer’s class of stock. As of December 31, 2025, we had five percent or more beneficial ownership with respect to 58 equity securities. This activity raises frequent regulatory, legal, and disclosure issues regarding our aggregate beneficial ownership level with respect to portfolio securities, including issues relating to issuers’ shareholder rights plans or “poison pills,” and various federal and state regulatory limitations, including state gaming laws and regulations, federal communications laws and regulations, and federal and state public utility laws and regulations, as well as federal proxy rules governing shareholder communications and federal laws and regulations regarding the reporting of beneficial ownership positions. Foreign country regulations may have different levels of ownership limitations. Our failure to comply with these requirements could have a material adverse effect on us.

The USA Patriot Act of 2001 contains anti-money laundering and financial transparency laws and mandates the implementation of various new regulations applicable to broker-dealers, mutual funds and other financial services companies, including standards for verifying client identification at account opening and obligations to monitor client transactions and report suspicious activities. Anti-money laundering laws outside of the U.S. contain some similar provisions. Our failure to comply with these requirements could have a material adverse effect on us.

We and certain of our affiliates are subject to the laws of non-U.S. jurisdictions and non-U.S. regulatory agencies or bodies. In connection with our office in London and our plans to market certain products in Europe, we are required to comply with the laws of the United Kingdom and other European countries regarding these activities. Our subsidiary, GAMCO Asset Management (UK) Limited, is regulated by the Financial Conduct Authority. In connection with our registration in the United Kingdom, we have minimum capital requirements that have been consistently met or exceeded. We opened offices in Zurich, Shanghai, and Tokyo and, therefore, are subject to national and local laws in those jurisdictions. We are subject to requirements in numerous jurisdictions regarding reporting of beneficial ownership positions in securities issued by companies whose securities are publicly-traded in those countries.

### ***Regulatory matters***

The investment management industry is likely to continue facing a high level of regulatory scrutiny and become subject to additional rules designed to increase disclosure, tighten controls, and reduce potential conflicts of interest. In addition, the SEC has substantially increased its use of focused inquiries, which request information from investment advisors and a number of fund complexes regarding particular practices or provisions of the securities laws. We participate in some of these inquiries in the normal course of our business. Changes in laws, regulations, and administrative practices by regulatory authorities, and the associated compliance costs, have increased our cost structure and could in the future have a material adverse impact. Although we have installed procedures and utilize the services of experienced administrators, accountants, and lawyers to assist us in adhering to regulatory guidelines and satisfying these requirements, and maintain insurance to protect ourselves in the case of client losses, there can be no assurance that the precautions and procedures that we have instituted and installed, or the insurance that we maintain to protect ourselves in case of client losses, will protect us from all potential liabilities.

See *Legal Proceedings* later in Part C of this Annual Report for additional information.

### **Cybersecurity**

#### ***Cybersecurity Risk Management and Strategy***

We have developed and implemented a cybersecurity risk management program intended to protect the confidentiality, integrity and availability of our critical systems and information.

Our cybersecurity risk management program is aligned with the Company’s business strategy. It shares common methodologies, reporting channels and governance processes that apply to other areas of enterprise risk, including legal, compliance, strategic, operational, and financial risk. Key elements of our cybersecurity risk management program include:

- risk assessments designed to help identify material cybersecurity risks to our critical systems, information, products, services, and our broader enterprise information technology environment;

- a security team principally responsible for managing our cybersecurity risk assessment processes, our security controls, and our response to cybersecurity incidents;
- the use of external service providers, where appropriate, to assess, test or otherwise assist with aspects of our security controls;
- training and awareness programs for team members that include periodic and ongoing assessments to drive adoption and awareness of cybersecurity processes and controls;
- a cybersecurity incident response plan that includes procedures for responding to cybersecurity incidents; and
- a third-party risk management process for service providers, suppliers, and vendors.

In the last three years, the Company has not experienced any material cybersecurity incidents, and expenses incurred from cybersecurity incidents were immaterial.

The operations of the Company are dependent on technology information and communications systems. A failure of any such system, or a security breach or cyberattack related thereto, could significantly disrupt the Company's operations. The service providers of the Company are subject to the same cybersecurity threats as the Company. If the Company and/or any service provider of the Company fails to adopt, implement or adhere to adequate cybersecurity measures, or in the event of a breach of any network, information relating to the Company or the Company's operations, as well as personal information relating to the Company's clients, may be lost, damaged or corrupted, or improperly accessed, used or disclosed.

Any system failure, security breach or cyberattack on the Company and/or any service provider of the Company could cause the Company to suffer financial loss, disruption to its business, including its trading capabilities and its ability to transfer payments, increased operating costs, liability to third parties, regulatory intervention and reputational damage, among other things, any one or all of which could have a material adverse effect on the Company.

### ***Cybersecurity Governance***

Our Board of Directors is responsible for overseeing cybersecurity threats, among other things. Our Chief Technology Officer, who reports to our Co-Chief Executive Officer ("Co-CEO"), provides our senior management and our Board of Directors periodic reports on our cybersecurity risks and any material cybersecurity incidents.

Our cybersecurity risk management team, in conjunction with various information technology, internal audit, legal, and compliance personnel, has primary responsibility for our overall cybersecurity risk management program.

Our team of cybersecurity professionals, led by our Chief Technology Officer, who has over 20 years of experience in the cybersecurity space and advanced training in the field of cybersecurity and technology, has primary responsibility for our internal cybersecurity personnel and our retained external cybersecurity consultants.

Our information technology team also monitors the prevention, detection, mitigation, and remediation of cybersecurity risks and incidents through various means, which may include briefings with internal personnel, threat intelligence and other information obtained from governmental, public or private sources, including external consultants engaged by us, and alerts and reports produced by security tools deployed in the information technology environment.

## Human Capital

Gabelli is a dynamic firm that seeks and employs teammates with entrepreneurial attitudes, experience in the financial services industry, and who are passionate about investing.



## Teammates

We provide a variety of benefits to promote retention and growth of our teammates. We strive to offer competitive compensation packages to our teammates, comprised of base pay, variable compensation, annual bonuses, as well as equity grants to promote a sense of ownership and aligned interests to our public shareholders. We offer a comprehensive benefits package that gives a robust collection of rewards and benefits, including healthcare and other insurance benefits and retirement savings plans. Additionally, we provide annual training and teammate reviews in order to promote growth and self-reflection.

As of February 28, 2026, we had a full-time staff of 186 teammates, of whom 70 served in the portfolio management, portfolio management support, and trading areas (including 20 portfolio managers for the Funds and Institutional and PWM), 63 served in the marketing and shareholder servicing areas, and 53 served in the administrative area.

## RISK FACTORS

We caution the reader that the following risks and those risks described elsewhere in this report could have a material adverse effect on our business, prospects, financial condition, results of operations, or cash flows or could cause a decline in the Company's stock price.

### Risks Related to Our Industry

*We earn substantially all of our revenue based on assets under management and, therefore, a reduction in assets under management would reduce our revenues and profitability. Assets under management fluctuate based on many factors including market conditions, investment performance, and terminations of investment contracts.*

Substantially all of our revenues are directly related to the amount of our AUM. Under our investment advisory contracts with our clients, the investment advisory fees we receive are typically based on the market value of AUM. In addition, we receive asset-based distribution fees with respect to the open-end Funds managed by Gabelli Funds or Teton and its affiliates over time pursuant to distribution plans adopted under provisions of Rule 12b-1 under the Company Act. Rule 12b-1 fees typically are based on the average AUM and represented approximately 5.3%, 6.2%, and 7.2% of our total revenues for the years ended December 31, 2025, 2024, and 2023, respectively. Accordingly, a decline in the prices of securities generally may cause our revenues and net income to decline by either causing the value of our AUM to decrease, which would result in lower investment advisory and Rule 12b-1 fees, or causing our clients to withdraw funds in favor of investments they perceive to offer greater opportunity or lower risk, which would also result in lower fees. The securities markets are highly volatile, and securities prices may decrease for many reasons beyond our control, including, but not limited to, economic and political events, war (whether or not directly involving the U.S.), acts of terrorism, natural disasters, unanticipated changes in currency exchange rates, interest rates, inflation rates, the yield curve, defaults by derivative counterparties,

bond default risks, sovereign debt crisis, and other factors that are difficult or impossible to predict. If a decline in securities prices caused our revenues to decline, it could have a material adverse effect on our earnings. Lastly, as we are a traditional asset manager, we do not receive additional revenue streams from alternative asset strategies such as hedge funds, private equity, or venture capital.

*Changes in laws or regulations or in governmental policies and compliance with existing laws or regulations could limit the sources and amounts of our revenues, increase our costs of doing business, decrease our profitability, and materially and adversely affect our business.*

Our business is subject to extensive regulation in the U.S., primarily at the federal level, including regulation by the SEC under the Company Act and the Advisers Act as well as other securities laws, by the Department of Labor under ERISA, and regulation by FINRA and state regulators. The Funds managed by Gabelli Funds are registered with the SEC as investment companies under the Company Act. The Advisers Act imposes numerous obligations on investment advisors, including record-keeping, advertising and operating requirements, fiduciary and disclosure obligations, custodial requirements, and prohibitions on fraudulent activities. The Company Act imposes similar obligations, as well as additional detailed operational requirements, on registered investment companies and investment advisors. In addition, our businesses are also subject to regulation by the Financial Services Authority in the United Kingdom, and we are also subject to the laws of other non-U.S. jurisdictions and non-U.S. regulatory agencies or bodies.

Our failure to comply with applicable laws or regulations could result in fines, censure, suspensions of teammates, or other sanctions, including revocation of our subsidiaries' registrations as an investment advisor or broker-dealer. Industry regulations are designed to protect our clients and investors in our funds and other third parties who deal with us and to ensure the integrity of the financial markets. Our industry is frequently altered by new laws or regulations and by revisions to, and evolving interpretations of, existing laws and regulations, both in the U.S. and in other nations. Changes in laws or regulations or in governmental policies could limit the sources and amounts of our revenues including but not limited to distribution revenue under the Company Act, increase our costs of doing business, decrease our profitability, and materially and adversely affect our business.

*Events outside of our control, including public health crises, could negatively affect the portfolios we manage and our results of our operations.*

Periods of market volatility have occurred and could continue to occur in response to pandemics or other events outside of our control. These types of events have adversely affected and could continue to adversely affect operating results for us and the portfolios that we manage. For example, in December 2019, a novel strain of coronavirus ("COVID-19") surfaced in China and spread globally, which resulted in restrictions on travel and congregation and the temporary closure of many non-essential businesses in affected jurisdictions. In addition to these developments having adverse consequences for us and the portfolios that we manage, the operations of Gabelli could be adversely impacted, including through quarantine measures and travel restrictions imposed on its personnel or service providers based in affected countries, or any related health issues of such personnel or service providers.

*To the extent we are forced to compete on the basis of price, we may not be able to maintain our current fee structure.*

The investment management business is highly competitive and has relatively low barriers to entry. To the extent we are forced to compete on the basis of price, we may not be able to maintain our current fee structure. Although our investment advisory fees vary from product to product, historically we have competed primarily on the performance of our products and not on the level of our investment advisory fees relative to those of our competitors. In recent years, however, there has been a trend toward lower fees in the investment management industry. In order to maintain our fee structure in a competitive environment, we must be able to continue to provide clients with investment returns and service that make investors willing to pay our fees. In addition, the board of directors or trustees of each Fund managed by Gabelli Funds must make certain findings as to the reasonableness of its fees. We cannot be assured that we will succeed in providing investment returns and service that will allow us to maintain our current fee structure. Fee reductions on existing or new business could have an adverse effect on our profit margins and results of operations.

*We derive a substantial portion of our revenues from investment advisory contracts that may be terminated on short notice or may not be renewed by clients.*

A substantial majority of our revenues are derived from investment management agreements and distribution arrangements. Investment management agreements and distribution arrangements with the domestic Funds are terminable without penalty on 60 days' notice (subject to certain additional procedural requirements in the case of termination by a Fund) and must be specifically approved at least annually, as required by law. Such annual renewal requires, among other things, approval by the disinterested members of each Fund's board of directors or trustees. Investment advisory agreements with our Institutional and PWM clients are typically terminable by the client without penalty on 30 days' notice or less. Any failure to renew or termination of a significant number of these agreements or arrangements would have a material adverse effect on us.

*Investors in the open-end Funds can redeem their investments in these Funds at any time without prior notice, which could adversely affect our earnings.*

Open-end Fund investors may redeem their investments in those Funds at any time without prior notice. Investors may reduce the aggregate amount of AUM for any number of reasons, including investment performance, changes in prevailing interest rates, and financial market performance. In a declining stock market, the pace of mutual fund redemptions could accelerate. Poor performance relative to other asset management firms tends to result in decreased purchases of open-end fund shares and increased redemptions of open-end fund shares. The redemption of investments in the Funds managed by Gabelli Funds would adversely affect our revenues, which are substantially dependent upon the AUM in our Funds. If redemptions of investments in the open-end Funds caused our revenues to decline, it could have a material adverse effect on our earnings.

*Certain changes in control of our company would automatically terminate our investment management agreements with our clients, unless our Institutional and PWM clients consent and, in the case of Fund clients, the Funds' boards of directors and shareholders vote to continue the agreements, and could prevent us for a two-year period from increasing the investment advisory fees we are able to charge our mutual fund clients.*

Under the Company Act, an investment management agreement with a fund must provide for its automatic termination in the event of its assignment. The fund's board and shareholders must vote to continue the agreement following its assignment, the cost of which ordinarily would be borne by us. Under the Advisers Act, a client's investment management agreement may not be assigned by the investment advisor without the client's consent. An investment management agreement is considered to be assigned to another party when a controlling block of the advisor's ownership is transferred. In our case, an assignment of our investment management agreements may occur if, among other things, we sell or issue a certain number of additional common shares in the future. We cannot be certain that our clients will consent to assignments of our investment management agreements or approve new agreements with us if an assignment occurs. Under the Company Act, if a fund's investment advisor engages in a transaction that results in the assignment of its investment management agreement with the fund, the advisor may not impose an unfair burden on that fund as a result of the transaction for a two-year period after the transaction is completed. The term "unfair burden" has been interpreted to include certain increases in investment advisory fees. This restriction may discourage potential purchasers from acquiring a controlling interest in our company.

*Catastrophic and unpredictable events could have a material adverse effect on our business.*

A terrorist attack, cyber-attack, political unrest, war (whether or not directly involving the U.S.), power failure, technology failure, natural disaster, or many other possible catastrophic or unpredictable events could adversely affect our future revenues, expenses, and earnings by, among other things: causing disruptions in U.S., regional or global economic conditions; interrupting our normal business operations; inflicting teammate casualties, including loss of our key executives; requiring substantial expenditures and expenses to repair, replace, and restore normal business operations; and reducing investor confidence.

We have a disaster recovery plan to address certain contingencies, but it cannot be assured that this plan will be effective or sufficient in responding to, eliminating, or ameliorating the effects of all disaster scenarios. If our teammates or vendors we rely upon for support in a catastrophic event are unable to respond adequately or in a timely manner, we may lose clients resulting in a decrease in AUM, which may have a material adverse effect on revenues and net income.

*The soundness of other financial institutions could adversely affect our business.*

Financial services institutions are interrelated as a result of trading, clearing, counterparty, or other relationships. We and the investments we manage may have exposure to many different industries and counterparties, and we routinely execute transactions with counterparties in the financial services industry, including brokers and dealers, commercial banks, investment banks, clearing organizations, mutual and hedge funds, and other institutions. Many of these transactions expose us, or the accounts we manage, to credit risk in the event of the counterparty's default. There is no assurance that any such losses would not materially and adversely impact the Company's revenues and earnings.

## **Risks Related to Our Business**

*Control by Mr. Gabelli of a majority of the combined voting power of our common stock may give rise to conflicts of interests.*

Since our IPO in 1999, Mr. Gabelli, through his control and majority ownership of GGCP, and now GGAM since its spin-off from GGCP on January 14, 2026, has beneficially owned a majority of our outstanding Class B Stock, currently representing approximately 95% of voting control. As long as Mr. Gabelli indirectly beneficially owns a majority of the combined voting power of our common

stock, he will have the ability to elect all of the members of our Board of Directors and thereby control our management and affairs, including determinations with respect to acquisitions, dispositions, borrowings, issuances of common stock or other securities, and the declaration and payment of dividends on the common stock. In addition, Mr. Gabelli will be able to determine the outcome of matters submitted to a vote of our shareholders for approval and will be able to cause or prevent a change in control of our company. As a result of Mr. Gabelli's control, none of our agreements with Mr. Gabelli and other companies controlled by him can be assumed to have been arrived at through arm's-length negotiations, although we believe that the parties endeavor to implement market-based terms. There can be no assurance that we would not have received more favorable terms, or offered less favorable terms to, an unaffiliated party.

*We depend on Mr. Gabelli and other key teammates.*

We are dependent on the efforts of Mr. Gabelli, our Chairman of the Board, Co-CEO, Co-Chief Investment Officer ("CIO") of the Value team (along with the two other Value Co-CIOs Christopher Marangi and Kevin Dreyer), and the primary portfolio manager for a significant majority of our AUM. The loss of Mr. Gabelli's services could have a material adverse effect on the Company.

On February 6, 2008, Mr. Gabelli entered into an amended and restated employment agreement (as amended, the "2008 Employment Agreement") with the Company, which was initially approved by the Company's shareholders on November 30, 2007 and approved again on May 6, 2011, May 5, 2015, and June 5, 2020, and which limits his activities outside of the Company. Under the 2008 Employment Agreement, the manner of computing Mr. Gabelli's remuneration from the Company is unchanged.

Mr. Gabelli has agreed that while he is employed by us he will not provide investment management services outside of GAMI, Teton, AC, and GGCP, except for certain permitted accounts. These permitted accounts, excluding personal accounts, held assets at December 31, 2025, 2024, and 2023 of approximately \$349.0 million, \$300.9 million and \$294.7 million, respectively. The 2008 Employment Agreement may not be amended without approval by the committee of our Board of Directors responsible for administering compensation and Mr. Gabelli.

Our future success depends to a substantial degree on our ability to retain and attract other qualified teammates to conduct our investment management business, including: Messrs. Marangi and Dreyer, the other Co-CIOs of the Value team; Howard Ward, CIO – Growth Portfolios; John Belton, Growth portfolio manager; Caesar Bryan, who manages Gold portfolios; James Dinsmore who manages the Convertible strategies; and Judy Raneri and Ron Eaker who manage the Gabelli U.S. Treasury Fund. The market for qualified portfolio managers is extremely competitive. We anticipate that it will be necessary for us to add portfolio managers and investment analysts as we further diversify our investment products and strategies. There can be no assurance, however, that we will be successful in our efforts to recruit and retain teammates. In addition, our investment professionals and senior marketing teammates have direct contact with our Institutional and PWM clients, which can lead to strong client relationships. The loss of these teammates could jeopardize our relationships with certain Institutional and PWM clients, and result in the loss of such accounts. The loss of key management professionals or the inability to recruit and retain sufficient portfolio managers and marketing teammates could have a material adverse effect on our business.

*There may be adverse effects on our business from a decline in the performance of the securities markets.*

Our results of operations are affected by many economic factors, including the performance of the securities markets. The securities markets in general have experienced significant volatility, and such volatility may continue or increase in the future. At December 31, 2025, approximately 85% of our AUM was invested in portfolios consisting primarily of equity securities. Any decline in the securities markets, in general, and the equity markets, in particular, could reduce our AUM and consequently reduce our revenues. In addition, any such decline in the equity markets, failure of these markets to sustain their prior levels of growth, or continued short-term volatility in these markets could result in investors withdrawing from the equity markets or decreasing their rate of investment, either of which would be likely to adversely affect us. Also, from time to time, a relatively high proportion of the assets we manage may be concentrated in particular economic or industry sectors. A general decline in the performance of securities in those industry sectors could have an adverse effect on our AUM and revenues.

*Since the separation, certain of our directors and officers may have actual or potential conflicts of interest because of their positions or relationships with AC.*

Since the separation of AC from the Company, Mr. Gabelli has continued to serve as our Chairman and Co-CEO and also serves as Executive Chairman of AC. Peter Goldstein, GAMI's Chief Legal Officer and Secretary, serves as the Chief Legal Officer and Secretary of AC. Mr. Douglas R. Jamieson has continued to serve as Co-CEO of GAMI, a Director of GAMI, and also serves as a Director of AC, and through March 15, 2025, as CEO and President of AC. In addition, certain of our portfolio managers and teammates provide services to AC pursuant to the Transitional Services Agreement with AC and are officers or employees of AC. Such dual assignments could

create, or appear to create, potential conflicts of interest when our and AC's officers and directors face decisions that could have different implications for the two companies.

Also, some of our directors, executive officers, portfolio managers, and teammates own shares of GGCP as well as AC common stock.

Mr. Gabelli is deemed to control AC by his control of GGCP, a private company controlled by Mr. Gabelli. Marc Gabelli is President of GGCP and Vice Chairman of AC.

In addition, potential conflicts of interest could arise in connection with the resolution of any dispute that may arise between GAMI and AC regarding the terms of the agreements governing the separation and the relationship thereafter between the companies. The executive officers and other personnel of AC who serve as directors or executive management of GAMI may interpret these agreements in their capacity as AC employees in a manner that would adversely affect the business of GAMI.

Also, certain subsidiaries of AC are investment advisers. The executive officers and other personnel of AC who also serve as directors or executive management of GAMI may be confronted with the possibility of making decisions in their AC capacity that would adversely affect the business of GAMI.

Both GAMI and AC will work to identify and resolve any potential conflicts of interest, including, but not limited to, the types described above at the earliest possible time. However, there can be no guarantee that the interests of GAMI may not be adversely affected at some point by such a conflict.

*Our reputation is critical to our success.*

Our reputation is critical to acquiring, maintaining, and developing relationships with our clients, Fund shareholders, and third party intermediaries. Misconduct by our teammates, or even unsubstantiated allegations, could result not only in direct financial harm but also in harm to our reputation, causing injury to the value of our brands and our ability to retain or attract AUM. Moreover, reputational harm may cause us to lose current teammates and we may be unable to attract new teammates with similar qualification or skills. Damage to our reputation could substantially reduce our AUM and impair our ability to maintain or grow our business, which could have a material adverse effect on us.

*There is a possibility of losses associated with proprietary investment activities.*

Currently, we maintain proprietary investment positions in securities. Market fluctuations and other factors may result in substantial losses in our proprietary accounts, which could have an adverse effect on our balance sheet or reduce our ability or willingness to make new investments.

*Future investment performance could reduce revenues and other income.*

Success in the investment management and mutual fund businesses is dependent on investment performance as well as distribution and client servicing. Good performance generally stimulates sales of our investment products and tends to keep withdrawals and redemptions low, which generates higher advisory fees (which are based on the amount of AUM). Conversely, poor performance, both in absolute terms and/or relative to peers and industry benchmarks, tends to result in decreased sales, increased withdrawals and redemptions in the case of the open-end Funds, and in the loss of Institutional and PWM clients, with corresponding decreases in revenues to us. Many analysts of the mutual fund industry believe that investment performance is the most important factor for the growth of open-end and closed-end funds, such as those we offer. Failure of our investment products to perform well or failure of the Funds to maintain ratings or rankings could, therefore, have a material adverse effect on us.

In addition, when our investment products experience strong results relative to the market or other asset classes, clients' investments in our products may increase beyond their target levels, and we could, therefore, suffer withdrawals as our clients rebalance their investments to fit their asset allocation preferences.

*Loss of significant Institutional and PWM accounts could affect our revenues.*

We had approximately 1,900 Institutional and PWM accounts as of December 31, 2025, of which the ten largest accounts generated approximately 9% of our total revenues during the year ended December 31, 2025. Account turnover for any reason would have an adverse effect on our revenues. Notwithstanding performance, we have, from time to time, experienced account turnover of large Institutional and PWM accounts as a result of corporate mergers and restructurings, and we could continue to lose accounts under these and other circumstances, including the performance of our small cap and value mandates.

*A decline in the market for closed-end funds could reduce our ability to raise future assets to manage.*

Market conditions may preclude us from increasing the assets we manage in our closed-end Funds. A significant portion of our growth in the assets we manage resulted from public offerings of the common and preferred shares of the closed-end Funds. We raised approximately \$7.3 billion in gross assets through closed-end Fund offerings since January 2004. The market conditions for these offerings may not be as favorable in the future, which could adversely impact our ability to grow our AUM and related revenue.

*The inability to access clients through third-party intermediaries could have a material adverse effect on our business.*

A significant portion of the assets we manage is attributable to the distribution of our products through third-party intermediaries. Our ability to distribute our products is highly dependent on access to the client bases and product platforms of international, national and regional securities firms, investment advisory firms, banks, insurance companies, defined contribution plan administrators, and other intermediaries, which generally offer competing investment products that could limit the distribution of our products. In addition, our separate account business, subadvisory, and model delivery services depend in part on recommendations by consultants, financial planners, and other professional advisors, as well as our existing clients.

The structure and terms of the distribution arrangements with intermediaries, including fees or rebates paid by us or our funds to intermediaries to assist with distribution efforts, and the ability of our funds to participate in these intermediary platforms are subject to changes driven by market competition and regulatory developments. Our existing relationships with third-party intermediaries and access to new intermediaries could be adversely affected by continued consolidation within the financial services industry. Consolidation may result in increased distribution costs, a reduction in the number of third parties distributing our investment products, or increased competition to access third-party distribution channels. There can be no assurance that we will be able to retain access to these channels. Loss of any of these third-party distribution channels, or changes to their structure and terms, or any reduction in our ability to access clients and investors through existing and new distribution channels, could adversely affect our business.

*Operational risks may disrupt our businesses, result in regulatory action against us, or limit our growth.*

We face operational risk arising from errors made in the execution, confirmation, or settlement of transactions or from transactions not being properly recorded, evaluated, or accounted for. Our business is highly dependent on our ability to process, on a daily basis, transactions across markets in an efficient and accurate manner. Consequently, we rely heavily on our financial, accounting, and other data processing systems. Despite the reliability of these systems, and the training and skill of our teammates and third parties we rely on, it remains likely that errors may occasionally occur due to the extremely large number of transactions we process. In addition, if systems we use are unable to accommodate an increasing volume of transactions, our ability to expand our businesses could be constrained. If any of these systems do not operate properly or are disabled, we could suffer financial loss, a disruption of our businesses, liability to clients, regulatory intervention, or reputational damage.

*Failure to maintain adequate infrastructure could impede the Company's productivity and growth. Additionally, failure to implement effective information and cyber security policies, procedures, and capabilities could disrupt operations and cause financial losses that could result in a decrease in the Company's earnings or stock price.*

Our infrastructure, including our information systems and technology, is vital to the competitiveness of our business. The failure to maintain an adequate infrastructure commensurate with the size and scope of our business could impede our productivity and growth, which could cause our earnings or stock price to decline. We outsource a significant portion of our information systems operations to third parties who are responsible for providing the management, maintenance, and updating of such systems. Technology is subject to rapid change and we cannot guarantee that our competitors may not implement more advanced technology platforms for their products than we do for ours. In addition, there can be no assurance that the cost of maintaining such outsourcing arrangements will not increase from its current level, which could have a material adverse effect on us.

In addition, any inaccuracies, delays, system failures, or security breaches in these and other systems could subject us to client dissatisfaction and losses. Breach of our technology systems could result in the loss of valuable information, liability for stolen assets or information, remediation costs to repair damage caused by the breach, additional security costs to mitigate against future incidents, and litigation costs resulting from the incident. Moreover, loss of confidential customer identification information could harm our reputation and subject us to liability under laws that protect confidential personal data, resulting in increased costs or loss of revenues. Further, although we take precautions to password protect and encrypt our laptops, tablets, smartphones, and other mobile electronic hardware, if such hardware is stolen, misplaced or left unattended, it may become vulnerable to hacking or other unauthorized use, creating a possible security risk and resulting in potentially costly actions by us.

Our operations rely on the secure processing, storage, and transmission of confidential and other information in our computer systems and networks. We may be the target of cyber-attacks, including denial-of-service attacks, and must continuously monitor and develop our systems to protect our technology infrastructure and data from misappropriation or corruption. Although we take protective measures and endeavor to modify them as circumstances warrant, our computer systems, software, and networks may be vulnerable to unauthorized access, misuse, computer viruses, or other malicious code and other events that could have a security impact. If one or more of such events occur, this potentially could jeopardize our or our clients' or counterparties' confidential and other information processed and stored in our, our clients', our counterparties', or third parties' operations, which could impact their ability to transact with us or otherwise result in significant losses or reputational damage. The increased use of mobile technologies can heighten these and other operational risks. We expect to expend additional resources on an ongoing basis to modify our protective measures and to investigate and remediate vulnerabilities or other exposures, and we may be subject to litigation and financial losses that are either not insured against or not fully covered through any insurance maintained by us.

We routinely transmit and receive personal, confidential, and proprietary information by email and other electronic means. We have discussed and worked with clients, vendors, service providers, counterparties, and other third parties to develop secure transmission capabilities and protect against cyber-attacks, but we do not have, and may be unable to put in place, secure capabilities with all of our clients, vendors, service providers, counterparties, and other third parties and we may not be able to ensure that these third parties have appropriate controls in place to protect the confidentiality of the information. An interception, misuse, or mishandling of personal, confidential, or proprietary information being sent to or received from a client, vendor, service provider, counterparty, or other third party could result in legal liability, regulatory action, and reputational harm.

*The failure of one of our vendors to fulfill its obligations to us could have a material adverse effect on the Company and its products.*

The Company depends on a number of key vendors for various fund administration, accounting, custody, and transfer agent roles and other operational needs. The failure or inability of the Company to diversify its sources for key services or the failure of any key vendors to fulfill their obligations could lead to operational issues for the Company and in certain products, which could result in financial losses for the Company and its clients.

*Our ability to meet cash needs may be adversely affected by a number of factors.*

Our ability to meet anticipated cash needs is affected by factors such as the market value of our assets, our operating cash flows, and our creditworthiness as perceived by lenders. Adverse developments in any of these areas could have significantly adverse effects on our business. If we are unable to obtain funds and financing in a timely manner or on acceptable terms, we may be forced to incur unanticipated costs or revise our business plans. Volatility in the U.S., regional, or global financing markets may also impact our ability to access the capital markets should we seek to do so, and we may be forced to incur unanticipated costs or experience other adverse effects on our business.

*We face exposure to legal actions, including litigation and arbitration claims and regulatory and governmental examinations and/or investigations. Insurance coverage for these matters may be inadequate.*

The volume of litigation and arbitration claims against financial services firms and the amount of damages claimed continues to increase. The types of claims that we may face are varied. For example, we may face claims against us for purchasing securities that are inconsistent with a client's investment objectives or guidelines, in connection with the operation of the Funds, or arising from an employment dispute. The risk of litigation is difficult to predict, assess, or quantify, and may occur years after the activities or events at issue. In addition, from time to time we may become the subject of governmental or regulatory investigations and/or examinations. Even if we prevail in a legal or regulatory action, the costs alone of defending against the action or the harm to our reputation could have a material adverse effect on us. The insurance coverage that we maintain with respect to legal and regulatory actions may be inadequate or may not cover certain proceedings.

*Compliance failures could adversely affect us.*

Our investment management activities are subject to client guidelines, and our mutual fund business involves compliance with numerous investment, asset valuation, liquidity, distribution, and tax requirements. A failure to comply with these guidelines or contractual requirements could result in damage to the Company's reputation or in its clients seeking to recover losses, withdrawing their AUM, or terminating their contracts, any of which could cause the Company's revenues and earnings to decline. There can be no assurance that the precautions and procedures that we have instituted and installed or the insurance we maintain to protect ourselves in case of client losses will protect us from potential liabilities.

*We face strong competition from numerous and, in many instances, larger companies.*

The asset management business is intensely competitive. We compete with numerous investment management companies, stock brokerage and investment banking firms, insurance companies, banks, savings and loan associations, and other financial institutions. The periodic establishment of new investment management companies and other competitors increases the competition that we face. At the same time, consolidation in the financial services industry has created stronger competitors with greater financial resources and broader distribution channels than our own. Competition is based on various factors, including, among others, business reputation, investment performance, product mix and offerings, service quality and innovation, distribution relationships, and fees charged. Our competitive success in any or all of these areas cannot be assured. Additionally, competing securities dealers whom we rely upon to distribute our open-end Funds also sell their own proprietary funds and investment products, which could limit the distribution of our investment products. To the extent that existing or potential customers, including securities dealers, decide to invest in or distribute the products of our competitors, the sales of our products as well as our market share, revenues, and net income could decline.

*Investors are choosing to invest in passive strategies such as index funds and ETFs.*

Our actively managed investment strategies compete against passive strategies. The trend in market demand for passive products such as index funds and ETFs, which favor our competitors in the asset management business, reduces opportunities for active managers. Investors are increasingly attracted to these lower fee passive products, which have gained, and may continue to gain, market share at the expense of active products like those managed by us.

*Fee pressures could reduce our profit margins.*

There has been a trend toward lower fees in some segments of the investment management industry. In order for us to maintain our fee structure in a competitive environment, we must be able to provide clients with investment returns and service that will encourage them to be willing to pay such fees. Expense limitations and reimbursements have been put in place for certain classes of certain Funds. Accordingly, there can be no assurance that we will be able to maintain our current fee structure. Fee reductions on existing or future new business could have an adverse effect on our profit margins and results of operations.

*Launch of new strategies and products may negatively impact our results of operations.*

We may support the development of new investment strategies and products by waiving a portion of the management fees we are entitled to receive or by subsidizing expenses. Additionally, the costs with establishing new strategies and products, including actively managed ETFs, can exceed the revenues generated, which could have an adverse effect on our profit margins and results of operations. Also, we may provide seed capital to new strategies and products, which could have an adverse effect on our consolidated financial statements or reduce our ability or willingness to make new investments.

*We are not subject to SEC reporting requirements, which may negatively impact our ability to raise capital.*

None of our common stock remains registered with the SEC under the Securities Act or the Exchange Act, or qualified under any state securities laws. This may limit our ability to raise capital under certain circumstances. For example, certain investors may not invest in unregistered securities, including in private offerings of securities issued by public companies that do not provide investors with registration rights. We avail ourselves of Blue Sky secondary trading exemptions through our inclusion on the OTCQX market, and other applicable exemptions and filings; however, not all states recognize these exemptions. If we were to decide to issue securities in a registered public offering, we would be required to register our securities under the Exchange Act and, among other things, comply with SEC reporting requirements, which would increase our ongoing costs of operations.

## **Risks Related to our Common Stock**

*The disparity in the voting rights among the classes of shares may have a potential adverse effect on the price of our Class A Stock.*

The holders of Class A Stock and Class B Stock have identical rights except that (i) holders of Class A Stock are entitled to one vote per share, while holders of Class B Stock are entitled to ten votes per share on all matters to be voted on by shareholders in general, and (ii) holders of Class A Stock are not eligible to vote on matters relating exclusively to Class B Stock and vice versa. Since our IPO in 1999, Mr. Gabelli, through his control and majority ownership of GGCP, and now GGAM since its spin-off from GGCP on January 14, 2026, has beneficially owned a majority of our outstanding Class B Stock, currently representing approximately 95% of voting control. As long as Mr. Gabelli indirectly beneficially owns a majority of the combined voting power of our common stock, he will have the ability to elect all of the members of our Board of Directors and thereby control our management and affairs, including, among other things, any determinations with respect to acquisitions, dispositions, borrowings, issuances of common stock or other securities, and the

declaration and payment of dividends on the common stock. The differential in voting rights and the ability of our company to issue additional Class B Stock could adversely affect the value of the Class A Stock to the extent the investors, or any potential future purchaser of our company, view the superior voting rights of the Class B Stock to have value. On May 3, 2017, Class A Stock shareholders approved an advisory proposal for the Board of Directors to consider the conversion and reclassification of our shares of Class B Stock into Class A Stock at a ratio in the range of 1.15 to 1.25 shares of Class A Stock for each share of Class B Stock. The Board of Directors has made no decision on this matter.

*Future sales of our Class A Stock in the public market or sales or distributions of our Class B Stock could lower our stock price, and any additional capital raised by us through the sale of equity or convertible securities may dilute our stockholders' ownership in us.*

We may sell additional shares of Class A Stock in subsequent public offerings. We also may issue additional shares of Class A Stock or convertible debt securities. During 2025, 2024, and 2023, AC sold 348,101 shares, 1,686,546 shares, and 7,392 shares, respectively, of our Class A Stock constituting approximately 9%, 29%, and 0%, respectively, of the Class A Stock outstanding at the beginning of the year. The market price of our Class A Stock could decline as a result of sales of Class A Stock by such shareholders. Any such sales, as well as sales by our other current shareholders, could be perceived negatively.

No prediction can be made as to the effect, if any, that future sales or distributions of Class B Stock owned by GGAM will have on the market price of the Class A Stock from time to time. Sales or distributions of substantial amounts of Class A Stock or Class B Stock, or the perception that such sales or distributions are likely to occur, could adversely affect the prevailing market price for the Class A Stock.

*Our common stock has relatively limited trading volume, and ownership of a large percentage is concentrated with a small number of shareholders, which could increase the volatility in our stock trading and dramatically affect our share price.*

A large percentage of our common stock is held by a limited number of shareholders. If our larger shareholders decide to liquidate their positions, it could cause significant fluctuation in the share price of our common stock.

## **General Risk Factors**

The risk factors described above are those that we think may be material with regard to an investment in us that are not applicable generally to all business enterprises. However, we are subject to the many risks that affect all or most business enterprises in the U.S. or internationally, and our business or financial condition could be materially affected by those risks.

## **PROPERTIES**

Our principal office is located at 249 Royal Palm Way, Palm Beach, FL. In addition, we lease office space in Charleston, SC; Chicago, IL; Greenwich, CT; Morristown, NJ; Reno, NV; Rye, NY; and St. Louis, MO and, internationally, in London, Zurich, Shanghai, and Tokyo.

## **LEGAL PROCEEDINGS**

From time to time, the Company may be named in legal actions and proceedings in the normal course of business. These actions may seek substantial or indeterminate compensatory as well as punitive damages or injunctive relief. The Company is also subject to governmental or regulatory examinations or investigations. The examinations or investigations could result in adverse judgments, settlements, fines, injunctions, restitutions, or other relief. For any such matters, the consolidated financial statements in Part D of this Annual Report include the necessary provisions for losses that the Company believes are probable and estimable. Furthermore, the Company evaluates whether there exist losses which may be reasonably possible and, if material, makes the necessary disclosures. Liabilities for loss contingencies arising from claims, assessments, litigation, fines and penalties, and other sources are recorded when it is probable that a liability has been incurred and the amount can be reasonably estimated. There are currently no such matters pending that the Company believes could have a material adverse effect on its consolidated financial condition, operations, or cash flows at December 31, 2025. See also Note 10, *Commitments and Contingencies*, to the consolidated financial statements in Part D of this Annual Report.

## **PART D: MANAGEMENT STRUCTURE AND FINANCIAL INFORMATION**

Information on Company insiders (officers, directors, and control persons), legal/disciplinary history, and disclosure of family relationships, related party transactions, and conflicts of interest is incorporated by reference from our proxy statement relating to our 2026 annual meeting of stockholders, which is expected to be filed with OTCIQ and mailed to shareholders on or about May 12, 2026.

### **GAMCO INVESTORS, INC. AND SUBSIDIARIES INDEX TO CONSOLIDATED FINANCIAL STATEMENTS**

	<b>Page</b>
Independent Auditor's Report	33
Consolidated Financial Statements:	
Consolidated Statements of Financial Condition at December 31, 2025 and 2024	35
Consolidated Statements of Income for the years ended December 31, 2025, 2024, and 2023	36
Consolidated Statements of Comprehensive Income for the years ended December 31, 2025, 2024, and 2023	37
Consolidated Statements of Stockholders' Equity for the years ended December 31, 2025, 2024, and 2023	38
Consolidated Statements of Cash Flows for the years ended December 31, 2025, 2024, and 2023	39
Notes to Consolidated Financial Statements	40

## **INDEPENDENT AUDITOR'S REPORT**

To the stockholders and the Board of Directors of GAMCO Investors, Inc.

### **Opinion**

We have audited the consolidated financial statements of GAMCO Investors, Inc. and subsidiaries (the "Company"), which comprise the consolidated statements of financial condition as of December 31, 2025 and 2024, and the related consolidated statements of income, comprehensive income, stockholders' equity, and cash flows for each of the three years in the period ended December 31, 2025, and the related notes to the consolidated financial statements (collectively referred to as the "financial statements").

In our opinion, the accompanying financial statements present fairly, in all material respects, the financial position of the Company as of December 31, 2025 and 2024, and the results of its operations and its cash flows for each of the three years in the period ended December 31, 2025 in accordance with accounting principles generally accepted in the United States of America.

### **Basis for Opinion**

We conducted our audits in accordance with auditing standards generally accepted in the United States of America (GAAS). Our responsibilities under those standards are further described in the Auditor's Responsibilities for the Audit of the Financial Statements section of our report. We are required to be independent of the Company and to meet our other ethical responsibilities, in accordance with the relevant ethical requirements relating to our audits. We believe that the audit evidence we have obtained is sufficient and appropriate to provide a basis for our audit opinion.

### **Responsibilities of Management for the Financial Statements**

Management is responsible for the preparation and fair presentation of the financial statements in accordance with accounting principles generally accepted in the United States of America, and for the design, implementation, and maintenance of internal control relevant to the preparation and fair presentation of financial statements that are free from material misstatement, whether due to fraud or error.

In preparing the financial statements, management is required to evaluate whether there are conditions or events, considered in the aggregate, that raise substantial doubt about the Company's ability to continue as a going concern for one year after the date that the financial statements are available to be issued.

### **Auditor's Responsibilities for the Audit of the Financial Statements**

Our objectives are to obtain reasonable assurance about whether the financial statements as a whole are free from material misstatement, whether due to fraud or error, and to issue an auditor's report that includes our opinion. Reasonable assurance is a high level of assurance but is not absolute

assurance and therefore is not a guarantee that an audit conducted in accordance with GAAS will always detect a material misstatement when it exists. The risk of not detecting a material misstatement resulting from fraud is higher than for one resulting from error, as fraud may involve collusion, forgery, intentional omissions, misrepresentations, or the override of internal control. Misstatements are considered material if there is a substantial likelihood that, individually or in the aggregate, they would influence the judgment made by a reasonable user based on the financial statements.

In performing an audit in accordance with GAAS, we:

- Exercise professional judgment and maintain professional skepticism throughout the audit.
- Identify and assess the risks of material misstatement of the financial statements, whether due to fraud or error, and design and perform audit procedures responsive to those risks. Such procedures include examining, on a test basis, evidence regarding the amounts and disclosures in the financial statements.
- Obtain an understanding of internal control relevant to the audit in order to design audit procedures that are appropriate in the circumstances, but not for the purpose of expressing an opinion on the effectiveness of the Company's internal control. Accordingly, no such opinion is expressed.
- Evaluate the appropriateness of accounting policies used and the reasonableness of significant accounting estimates made by management, as well as evaluate the overall presentation of the financial statements.
- Conclude whether, in our judgment, there are conditions or events, considered in the aggregate, that raise substantial doubt about the Company's ability to continue as a going concern for a reasonable period of time.

We are required to communicate with those charged with governance regarding, among other matters, the planned scope and timing of the audit, significant audit findings, and certain internal control-related matters that we identified during the audit.

#### **Other Information Included in the Annual Report**

Management is responsible for the other information included in the annual report. The other information comprises the information included in the annual report but does not include the financial statements and our auditor's report thereon. Our opinion on the financial statements does not cover the other information, and we do not express an opinion or any form of assurance thereon.

In connection with our audits of the financial statements, our responsibility is to read the other information and consider whether a material inconsistency exists between the other information and the financial statements, or the other information otherwise appears to be materially misstated. If, based on the work performed, we conclude that an uncorrected material misstatement of the other information exists, we are required to describe it in our report.

Deloitte & Touche LLP

March 23, 2026

**GAMCO INVESTORS, INC. AND SUBSIDIARIES**  
**CONSOLIDATED STATEMENTS OF FINANCIAL CONDITION**  
(in thousands, except per share data)

	December 31,	
	2025	2024
<b>ASSETS</b>		
Cash and cash equivalents	\$ 16,457	\$ 17,254
Short-term investments in U.S. Treasury Bills	49,463	99,216
Investments in fixed maturity securities	8,072	5,657
Investments in securities, at fair value	121,488	60,650
Investment advisory and incentive fees receivable	28,199	18,189
Net deferred tax assets and income taxes receivable	8,744	8,042
Receivable from brokers	5,877	3,103
Finance lease	2,299	2,719
Goodwill and identifiable intangible assets	6,441	2,634
Receivable from affiliates	1,808	1,845
Other assets	5,937	5,368
Total assets	\$ 254,785	\$ 224,677
<b>LIABILITIES AND STOCKHOLDERS' EQUITY</b>		
Compensation payable	\$ 32,339	\$ 40,633
Lease liability obligations	4,153	4,940
Payable to affiliates	8,839	371
Income taxes payable	-	193
Accrued expenses and other liabilities	37,986	41,235
Total liabilities	83,317	87,372
Commitments and contingencies (Note 11)		
Stockholders' Equity		
Class A Common Stock, \$0.001 par value; 5,600,000 shares authorized and issued; 3,033,942 and 3,918,362 shares outstanding, respectively	6	6
Class B Common Stock, \$0.001 par value; 20,000,000 shares authorized, 19,011,934 shares issued; 18,982,463 and 19,011,934 shares outstanding, respectively	19	19
Additional paid-in capital	25,435	32,351
Retained earnings	211,810	148,627
Accumulated comprehensive loss	(142)	(245)
Treasury stock, at cost (2,595,529 and 1,681,638 shares, respectively)	(65,660)	(43,453)
Total stockholders' equity	171,468	137,305
Total liabilities and stockholders' equity	\$ 254,785	\$ 224,677

*See notes to consolidated financial statements.*

**GAMCO INVESTORS, INC. AND SUBSIDIARIES**  
**CONSOLIDATED STATEMENTS OF INCOME**  
(in thousands, except per share data)

	Years Ended December 31,		
	2025	2024	2023
Revenues			
Investment advisory and incentive fees	\$ 230,254	\$ 215,093	\$ 217,169
Distribution fees and other income	14,919	16,304	18,696
<b>Total revenues</b>	<b>245,173</b>	<b>231,397</b>	<b>235,865</b>
Expenses			
Compensation	117,964	108,965	112,750
Management fee	8,482	9,016	8,657
Distribution costs	22,751	23,326	24,682
Other operating expenses	23,049	20,331	23,569
<b>Total expenses</b>	<b>172,246</b>	<b>161,638</b>	<b>169,658</b>
<b>Operating income</b>	<b>72,927</b>	<b>69,759</b>	<b>66,207</b>
Non-operating income			
Gain from investments, net	7,346	5,745	3,754
Interest and dividend income	7,425	11,796	9,112
Gain on extinguishment of liabilities	2,893	-	-
Interest expense	(1,235)	(1,155)	(1,159)
Charitable giving contribution	(2,500)	(5,000)	-
<b>Total non-operating income</b>	<b>13,929</b>	<b>11,386</b>	<b>11,707</b>
<b>Income before income taxes</b>	<b>86,856</b>	<b>81,145</b>	<b>77,914</b>
Provision for income taxes	16,107	18,215	17,707
<b>Net income</b>	<b>\$ 70,749</b>	<b>\$ 62,930</b>	<b>\$ 60,207</b>
Earnings per share:			
Basic	\$ 3.17	\$ 2.58	\$ 2.38
Diluted	\$ 3.17	\$ 2.58	\$ 2.38
Weighted average shares outstanding:			
Basic	22,340	24,369	25,286
Diluted	22,340	24,369	25,286

*See notes to consolidated financial statements.*

**GAMCO INVESTORS, INC. AND SUBSIDIARIES**  
**CONSOLIDATED STATEMENTS OF COMPREHENSIVE INCOME**  
(in thousands)

	<b>Years Ended December 31,</b>		
	<b>2025</b>	<b>2024</b>	<b>2023</b>
Net income	\$ 70,749	\$ 62,930	\$ 60,207
Other comprehensive income / (loss):			
Foreign currency translation gain / (loss)	103	(22)	72
Total comprehensive income	<u>\$ 70,852</u>	<u>\$ 62,908</u>	<u>\$ 60,279</u>

*See notes to consolidated financial statements.*

**GAMCO INVESTORS, INC. AND SUBSIDIARIES**  
**CONSOLIDATED STATEMENTS OF STOCKHOLDERS' EQUITY**  
(in thousands, except per share data)

**Year Ended December 31, 2025**

	Common Stock	Additional Paid-in Capital	Retained Earnings	Accumulated Other Comprehensive Loss	Treasury Stock	Total Stockholders' Equity
Balance at December 31, 2024	\$ 25	\$ 32,351	\$ 148,627	\$ (245)	\$ (43,453)	\$ 137,305
Net income	-	-	70,749	-	-	70,749
Acquisition of Gabelli-Keeley Funds/ SMAs (Note 11)	-	(6,916)	-	-	-	(6,916)
Foreign currency translation	-	-	-	103	-	103
Dividends declared (\$0.34 per share)	-	-	(7,566)	-	-	(7,566)
Purchases of treasury stock	-	-	-	-	(22,207)	(22,207)
Balance at December 31, 2025	<u>\$ 25</u>	<u>\$ 25,435</u>	<u>\$ 211,810</u>	<u>\$ (142)</u>	<u>\$ (65,660)</u>	<u>\$ 171,468</u>

**Year Ended December 31, 2024**

	Common Stock	Additional Paid-in Capital	Retained Earnings	Accumulated Other Comprehensive Loss	Treasury Stock	Total Stockholders' Equity
Balance at December 31, 2023	\$ 33	\$ 32,351	\$ 527,715	\$ (223)	\$ (378,897)	\$ 180,979
Net income	-	-	62,930	-	-	62,930
Foreign currency translation	-	-	-	(22)	-	(22)
Dividends declared (\$2.36 per share)	-	-	(57,245)	-	-	(57,245)
Retirement of treasury stock	(8)	-	(384,773)	-	384,781	-
Purchases of treasury stock	-	-	-	-	(49,337)	(49,337)
Balance at December 31, 2024	<u>\$ 25</u>	<u>\$ 32,351</u>	<u>\$ 148,627</u>	<u>\$ (245)</u>	<u>\$ (43,453)</u>	<u>\$ 137,305</u>

**Year Ended December 31, 2023**

	Common Stock	Additional Paid-in Capital	Retained Earnings	Accumulated Other Comprehensive Loss	Treasury Stock	Total Stockholders' Equity
Balance at December 31, 2022	\$ 33	\$ 31,884	\$ 471,646	\$ (295)	\$ (364,214)	\$ 139,054
Net income	-	-	60,207	-	-	60,207
Foreign currency translation	-	-	-	72	-	72
Dividends declared (\$0.16 per share)	-	-	(4,138)	-	-	(4,138)
Stock based compensation expense	-	467	-	-	-	467
Purchases of treasury stock	-	-	-	-	(14,683)	(14,683)
Balance at December 31, 2023	<u>\$ 33</u>	<u>\$ 32,351</u>	<u>\$ 527,715</u>	<u>\$ (223)</u>	<u>\$ (378,897)</u>	<u>\$ 180,979</u>

*See notes to consolidated financial statements.*

**GAMCO INVESTORS, INC. AND SUBSIDIARIES**  
**CONSOLIDATED STATEMENTS OF CASH FLOWS**  
(In thousands)

	Years Ended December 31,		
	2025	2024	2023
<b>Cash flows from operating activities:</b>			
Net income	\$ 70,749	\$ 62,930	\$ 60,207
Adjustments to reconcile net income to net cash provided by operating activities:			
Depreciation and amortization	848	849	1,149
Accretion of discounts and amortization of premiums	(2,206)	(5,103)	(2,334)
Stock based compensation expense	-	-	467
Deferred income taxes	(1,556)	190	6,017
Amortization of intangible asset	402	-	-
Impairment charge on intangible asset	-	-	210
Write down of goodwill	213	-	-
Foreign currency translation gain / (loss)	-	-	72
Net realized (gains) / losses on securities	(12,690)	(3,392)	11,342
Unrealized (gains) / losses on securities	4,827	(2,575)	(14,853)
Gain on extinguishment of liabilities	(2,893)	-	-
(Increase) decrease in assets:			
Investments in securities	(4,359)	(1,252)	797
Investment advisory and incentive fees receivable	(10,010)	(211)	3,418
Income taxes receivable	854	695	1,757
Receivable from brokers	(2,774)	1,459	(2,630)
Receivable from affiliates	37	674	822
Other assets	(997)	(993)	(863)
Increase (decrease) in liabilities:			
Compensation payable	(8,294)	17,234	(10,524)
Lease liability obligation	(234)	268	-
Payable to affiliates	8,468	(200)	(2,285)
Income taxes payable	(193)	176	14
Payable for investments purchased	-	-	(2,980)
Accrued expenses and other liabilities	(7,019)	1,720	(484)
Total adjustments	<u>(37,576)</u>	<u>9,539</u>	<u>(10,888)</u>
Net cash provided by operating activities	<u>33,173</u>	<u>72,469</u>	<u>49,319</u>
<b>Cash flows from investing activities:</b>			
Purchases of securities	(184,240)	(215,937)	(105,580)
Proceeds from sales and maturities of securities	185,168	205,803	70,650
Acquisition of intangible assets	(4,675)	-	-
Net cash used in investing activities	<u>(3,747)</u>	<u>(10,134)</u>	<u>(34,930)</u>
<b>Cash flows from financing activities:</b>			
Dividends paid	(7,566)	(57,245)	(4,039)
Purchases of treasury stock	(22,207)	(49,150)	(14,548)
Repayments of principal portion of lease liability	(553)	(465)	(385)
Net cash used in financing activities	<u>(30,326)</u>	<u>(106,860)</u>	<u>(18,972)</u>
Effect of exchange rates on cash and cash equivalents	103	(22)	3
Net decrease in cash and cash equivalents	<u>(797)</u>	<u>(44,547)</u>	<u>(4,580)</u>
Cash and cash equivalents, beginning of period	17,254	61,801	66,381
Cash and cash equivalents, end of period	<u>\$ 16,457</u>	<u>\$ 17,254</u>	<u>\$ 61,801</u>
<b>Supplemental disclosures of cash flow information:</b>			
Cash paid for interest	<u>\$ 1,129</u>	<u>\$ 1,149</u>	<u>\$ 1,151</u>
Cash paid for taxes, net of refunds	<u>\$ 21,893</u>	<u>\$ 18,088</u>	<u>\$ 10,496</u>
<b>Supplemental disclosure of non-cash activity:</b>			

For 2025, 2024 and 2023, the Company accrued excise tax payable on purchases of treasury stock of \$208, \$187 and \$135, respectively.

For 2025, in connection with the acquisition of the Gabelli-Keeley Funds/SMAs, the purchase price included \$4,027 in seller financing payable in cash over a five-year period. See Note 11.

For 2023, the Company accrued dividends on RSAs of \$98.

*See notes to consolidated financial statements.*

**GAMCO INVESTORS, INC. AND SUBSIDIARIES**  
**NOTES TO CONSOLIDATED FINANCIAL STATEMENTS**  
**December 31, 2025**

**1. Organization and Description of Business**

Unless indicated otherwise, or the context otherwise requires, references in this report to “GAMCO Investors, Inc.,” “Gabelli,” “the Company,” “the Firm,” and “GAMI” or similar terms are to GAMCO Investors, Inc., its predecessors, and its subsidiaries.

Gabelli (OTCQX: GAMI), established in 1977 and incorporated under the laws of Delaware, is a widely-recognized provider of investment advisory services to 27 open-end funds, 13 United States (“U.S.”) closed-end funds and one United Kingdom limited investment company (collectively, “closed-end funds”), 8 actively managed exchange traded funds (“ETFs”), one société d’investissement à capital variable (“SICAV”), and approximately 1,900 institutional and private wealth management (“Institutional and PWM”) investors principally in the U.S. The Company’s revenues are based primarily on the levels of assets under management (“AUM”) and fees associated with the various investment products.

In 1977, Gabelli launched its well-known All Cap Value equity strategy, Gabelli Value, in a separate account format and in 1986 entered the mutual fund business. Today, Gabelli offers a diverse set of client solutions across asset classes (e.g. Equities, Debt Instruments, Convertibles, non-market correlated Merger Arbitrage), regions, market capitalizations, sectors (e.g. Gold, Utilities) and investment styles (e.g. Value, Growth). Gabelli serves a broad client base, including institutions, intermediaries, offshore investors, private wealth, and direct retail investors.

The investment advisory business is conducted principally through the following subsidiaries: Gabelli Funds, LLC (open-end funds, closed-end funds, actively managed ETFs, and SICAV, collectively, the “Funds”) (“Gabelli Funds”) and GAMCO Asset Management Inc. (Institutional and PWM) (“GAMCO Asset”), which are both registered investment advisors under the Investment Advisers Act of 1940, as amended. The distribution of open-end funds and actively managed ETFs are conducted through G.distributors, LLC (“G.distributors”), the Company’s broker-dealer subsidiary, which is registered with the Securities and Exchange Commission (“SEC”) and regulated by the Financial Industry Regulatory Authority.

**2. Significant Accounting Policies**

*Basis of Presentation*

The consolidated financial statements have been prepared in accordance with U.S. generally accepted accounting principles (“GAAP”). The consolidated financial statements include the accounts of the Company and its wholly-owned subsidiaries including: Gabelli Funds, GAMCO Asset, G.distributors, and GAMCO Asset Management (UK) Limited and majority-owned Gabelli-Keeley, LLC (“Gabelli-Keeley”). Intercompany accounts and transactions have been eliminated. Subsidiaries are fully consolidated from the date of acquisition, being the date on which GAMI obtains control, and continue to be consolidated until the date that such control ceases.

The annual financial statements have been prepared in accordance with U.S. GAAP for annual financial information. In the opinion of management, all adjustments considered necessary for the fair presentation of consolidated financial statements for the years presented have been included.

*Use of Estimates*

The preparation of the consolidated financial statements in conformity with U.S. GAAP requires management to make estimates and assumptions that affect the reported amounts of assets and liabilities and disclosure of contingent assets and liabilities at the date of the financial statements and the reported amounts of revenues and expenses during the reporting period. Actual results could differ from those estimates and those differences could be material.

*Cash and Cash Equivalents*

Cash equivalents primarily consist of an affiliated money market fund (The Gabelli U.S. Treasury Money Market Fund) which is highly liquid.

*Receivable from Brokers*

Receivable from brokers primarily consists of foreign currencies held at brokers.

### *Currency Translation*

Assets and liabilities of subsidiaries having non-U.S. dollar functional currencies are translated at exchange rates at the dates of the applicable consolidated statements of financial condition. Revenues and expenses of such subsidiaries are translated at the average exchange rates during the period. The gains or losses resulting from translating non-U.S. dollar functional currency into U.S. dollars are included in the consolidated statements of comprehensive income.

Transactions in currencies other than the U.S. dollar, including the Company's investments in U.K. gilts, are measured on the transaction date in U.S. dollars. Changes in the expected cash flows caused by changes in exchange rates, measured at exchange rates at the dates of the applicable consolidated statements of financial condition, are included in gain/(loss) from investments, net on the consolidated statements of income.

### *Investments in Securities, Short-term Investments in U.S. Treasury Bills, and Investments in Fixed Maturity Securities*

Investment in securities include equity and debt securities which are recorded at fair value in the statements of financial condition, with any unrealized gains or losses reported in current period earnings in gain/(loss) from investments, net on the consolidated statements of income.

Management determines the appropriate classification of debt securities at the time of purchase. These debt securities include investments in preferred securities subject to mandatory redemption which are classified as trading, with any unrealized gains or losses reported in current period earnings in gain/(loss) from investments, net on the consolidated statements of income.

Investments in fixed maturity securities include government debt with maturities exceeding three months at the time of purchase and are classified as either trading, available for sale ("AFS"), or held-to-maturity ("HTM"). The Company does not hold any investments in debt securities accounted for as AFS. The Company's short-term investments in debt securities, consisting of U.S. Treasury Bills, and investments in fixed maturity securities, consisting of U.K. gilts, are both classified as HTM as the Company has the intent and ability to hold these securities until maturity. Both investments represent fixed income securities recorded at amortized cost. Discounts from and premiums to par value on HTM investments are accreted/amortized into interest income over the life of the respective security using the effective interest method. The amortized cost of debt investments represents the original cost adjusted for the accretion of discounts and amortization of premiums, if any. HTM investments are evaluated for other than temporary impairment each reporting period and any impairment charges are recorded in gain/(loss) from investments, net on the consolidated statements of income. As of December 31, 2025 and 2024, there were no impairments on the Company's investments in debt securities classified as HTM investments. The Company's investments in preferred securities subject to mandatory redemption are classified as trading, with any unrealized gains or losses reported in current period earnings in gain/(loss) from investments, net on the consolidated statements of income.

Securities transactions and any related gains and losses are recorded on a trade date basis. Realized gains and losses from equity and debt securities transactions are recorded on the specific identified cost basis and are included in gain/(loss) from investments, net on the consolidated statements of income.

### *Major Revenue-Generating Services and Revenue Recognition*

The Company's revenues are derived primarily from investment advisory and incentive fees and distribution fees.

Investment advisory and incentive fees are directly influenced by the level and mix of AUM, as fees are derived from a contractually-determined percentage of AUM for each account as well as incentive fees earned on certain accounts. Advisory fees from Funds and sub-advisory accounts are computed daily or weekly based on average net assets and amounts receivable are included in investment advisory and incentive fees receivable on the consolidated statements of financial condition. Advisory fees from Institutional and PWM accounts are generally computed quarterly based on account values as of the end of the preceding quarter, and amounts receivable are included in investment advisory and incentive fees receivable on the consolidated statements of financial condition. The Company derived approximately 94%, 93% and 92% of its total revenues from advisory fees, including incentive fees, for the years ended December 31, 2025, 2024, and 2023, respectively. These revenues vary depending upon the level of sales compared with redemptions, financial market conditions, performance, and the fee structure for the Fund or account. Revenues derived from the equity-oriented portfolios generally have higher advisory fee rates than fixed income portfolios.

For The GDL Fund, there is an incentive fee earned as of the end of the calendar year which varies to the extent the total return of the fund is in excess of the ICE Bank of America Merrill Lynch 3 Month U.S. Treasury Bill Index total return. This fee is recognized at the

end of the measurement period. Receivables due on incentive fees relating to The GDL Fund are included in investment advisory and incentive fees receivable on the consolidated statements of financial condition. As of December 31, 2025 and 2024, there were \$1.2 million and \$0.1 million in incentive fees receivable for the GDL Fund.

For the Gabelli Merchant Partners Plc (“GMP”), there is an incentive fee which is earned and recognized at the end of the measurement period, June 30<sup>th</sup> and varies to the extent the total return of the fund is in excess of twice the rate of return of the 13 week Treasury Bills over the performance period. There were no incentive fees receivable for GMP as of December 31, 2025 or 2024.

Advisory fees on certain of the closed-end preferred shares are earned at year-end if the total return to common shareholders of the closed-end fund for the calendar year exceeds the dividend rate of the preferred shares. These fees are recognized at the end of the measurement period, which is annually, or earlier if there is a redemption. Receivables due for advisory fees on closed-end preferred shares are included in investment advisory and incentive fees receivable on the consolidated statements of financial condition. There were no advisory fees receivable on closed-end preferred shares as of December 31, 2025 and 2024.

Prior to January 1, 2024, the Company earned an incentive fee from the GAMCO Merger Arbitrage SICAV. This fee was recognized as of the end of the calendar year when the total return of a share class exceeds the hurdle rate (return on the 13-week Treasury Bill) and the NAV exceeds the high water mark, at the rate of fifteen percent of the total return of share classes not denominated in the base currency and at the rate of twenty percent of the total return of share classes denominated in the base currency. This fee was recognized at the end of the measurement period, which is annually on a calendar year basis, or earlier if there was a redemption. Effective January 1, 2024, the Company amended its agreement with Gabelli & Company Investment Advisers, Inc. (“GCIA”), an affiliate, which resulted in the Company no longer being entitled to this incentive fee.

Distribution fees revenues are derived primarily from the distribution of Gabelli and GAMCO open-end Funds as well as the affiliated TETON Westwood and Keeley open-end funds advised by either a subsidiary of GAMI (Gabelli Funds) or a subsidiary of GGCP, Inc. (“GGCP”) (Teton Advisors, Inc. (“Teton”). G.distributors distributes the open-end Funds pursuant to distribution agreements with each Fund. Under each distribution agreement with an open-end Fund, G.distributors offers and sells such open-end Fund shares on a continuous basis and pays all of the costs of marketing and selling the shares, including printing and mailing prospectuses and sales literature, advertising and maintaining sales and customer service teammates and sales and services fulfillment systems, and payments to the sponsors of third party distribution programs, financial intermediaries, and G.distributors’ sales teammates. G.distributors receives fees for such services pursuant to distribution plans adopted under provisions of 12b-1 of the Investment Company Act of 1940, as amended (“Company Act”). G.distributors is the principal underwriter for funds distributed in multiple classes of shares which carry either a front-end or back-end sales charge.

Under the distribution plans, the Class AAA shares of the open-end Funds (except Gabelli Capital Asset Fund, and The Gabelli ABC Fund) and the Class A and ADV shares of certain Funds pay G.distributors a distribution fee of 0.25% per year on the average daily net assets of the fund. Class C shares have a 12b-1 distribution plan with a distribution fee totaling 1.00%.

Distribution fees from the open-end Funds are computed daily based on average net assets. The amounts receivable for distribution fees are included in receivables from affiliates on the consolidated statements of financial condition.

Note 3 to the consolidated financial statements includes additional information on the Company’s revenue recognition policy.

#### *Distribution Costs*

The Company incurs certain promotion and distribution costs, which are expensed as incurred, principally related to the sale of shares of Funds and after-market support services related to the closed-end Funds. Additionally, Gabelli Funds has agreed to reimburse expenses on certain Funds beyond certain expense caps. For the years ended December 31, 2025, 2024, and 2023, the amounts reimbursed were \$6.8 million, \$5.9 million, and \$5.7 million, respectively, and were presented on a gross basis in distribution costs in the consolidated statements of income.

#### *Interest and Dividend Income and Interest Expense*

Dividends are recorded on the ex-dividend date. Interest income and interest expense are accrued as earned or incurred. In 2021, the Company issued 2-year puttable subordinated notes due June 15, 2023 (“Subordinated Notes”). Interest expense on the consolidated statements of income include the straight-line amortization of certain costs capitalized related to the issuance of the Subordinated Notes.

### *Gain on Extinguishment of Liabilities*

The Company periodically evaluates liabilities to determine whether amounts remain legally enforceable. Liabilities are derecognized when the Company determines that the obligation has been extinguished, including when the applicable statute of limitations has expired and no further legal obligation exists. Such amounts derecognized as liabilities are recognized as gain on extinguishment of liabilities in the period of determination. For the year ended December 31, 2025, amounts related to distribution costs included in accrued expenses and other liabilities of \$2.9 million were derecognized and included in gain on extinguishment of liabilities on the consolidated statements of income. There was no gain on the extinguishment of liabilities recognized during the years ended December 31, 2024 and 2023.

### *Depreciation and Amortization*

Fixed assets other than leasehold improvements, with net book value of \$2.2 million and \$1.9 million at December 31, 2025 and 2024, respectively, included in other assets on the consolidated statements of financial condition, are recorded at cost and depreciated using the straight-line method over their estimated useful lives from four to seven years. Accumulated depreciation was \$4.1 million and \$3.8 million at December 31, 2025 and 2024, respectively. Leasehold improvements, with net book value of \$0.2 million and \$0.2 million at December 31, 2025 and 2024, respectively, which are included in other assets on the consolidated statements of financial condition, are recorded at cost and amortized using the straight-line method over their estimated useful lives or lease terms, whichever is shorter. The leased property under the finance lease is depreciated utilizing the straight-line method over the term of the lease, which expires on December 31, 2028. The finance lease was extended on June 11, 2014 to December 31, 2028 from December 31, 2023. For the years ended December 31, 2025, 2024, and 2023, depreciation and amortization were \$0.8 million, \$0.8 million, and \$1.1 million, respectively.

### *Goodwill and Identifiable Intangible Assets*

Goodwill is initially measured as the excess of the cost of the acquired business over the sum of the amounts assigned to assets acquired less the liabilities assumed. Intangible assets are initially measured at cost and are presented net of amortization, where applicable. The Company assesses the recoverability of goodwill and intangible assets at least annually each November 30, or more often should events warrant. In assessing the recoverability of goodwill and intangible assets, projections regarding estimated future cash flows and other factors are made to determine the fair value of the assets. If the book value exceeds the fair value of the assets, an impairment charge is recorded, corresponding to the amount by which the book value exceeds the fair value.

Intangible assets represent the acquisition-date fair value of customer relationships and mutual fund management contracts acquired. Customer relationships are classified as long-lived assets and are amortized over a 9-10 year period, while the mutual fund management contracts are classified as indefinite-lived assets. They are reviewed for impairment when there is evidence that events or changes in circumstances indicate that the carrying amount may not be recoverable. Recoverability of assets to be held and used is measured by comparing the carrying amount to the estimated undiscounted future cash flows expected to be generated. If the carrying amount of an asset exceeds its estimated future cash flows, an impairment charge is recognized for the amount by which the carrying amount of the asset exceeds the estimated fair value. The Company enters into asset acquisitions for single identifiable intangible assets which are accounted for under a cost accumulation model in which cash consideration and transaction costs are allocated to the intangible assets acquired. Accounting for asset acquisitions requires the Company to make significant estimates and assumptions with respect to the useful life of the asset purchased. These assumptions are based in part on historical experience and market data.

### *Contingent Consideration*

The Company may incur contingent consideration obligations that require additional payments based on future events or the achievement of specified performance targets. The liability is recorded at fair value on the acquisition date and is subsequently remeasured at each reporting period in accordance with Accounting Standards Codification (“ASC”) 820, *Fair Value Measurement*. Changes in the fair value of contingent consideration are recognized in earnings unless they qualify as an adjustment to the purchase price under applicable accounting guidance. When the contingency is resolved, any payments are recorded as an adjustment to the carrying value of the liability. If no payment is required, the liability is derecognized. The Company assesses contingent consideration obligations quarterly, updating estimates based on new information regarding the likelihood and amount of future payments.

### *Income Taxes*

GAMI and its operating subsidiaries file a consolidated federal income tax return. Accordingly, the income tax provision represents the aggregate of the amounts provided for all companies. The Company operates in numerous states and countries through its subsidiaries and therefore must allocate income, expenses, and earnings to these taxing jurisdictions taking into account the various laws and regulations in each jurisdiction. Each year, the Company files tax returns in each jurisdiction and settles its tax liabilities, which may be

subject to audit by the taxing authorities. Deferred tax assets and liabilities are recorded for temporary differences between the tax basis of assets and liabilities and the reported amounts on the consolidated statements of financial condition using the statutory tax rates in effect for the year when the reported amount of the asset or liability is recovered or settled, respectively. The effect on deferred tax assets and liabilities of a change in tax rates is recognized in the results of operations in the period that includes the enactment date. Excess tax benefits or tax deficiencies are recognized against income tax expenses. A valuation allowance is recorded to reduce the carrying values of deferred tax assets to the amount that is more likely than not to be realized. The calculation of our tax liabilities involves dealing with uncertainties in the application of complex tax laws and regulations in several jurisdictions.

In accordance with ASC Topic 740, *Income Taxes* (“ASC 740”), a tax benefit from an uncertain tax position may be recognized when it is more likely than not that the position will be sustained upon examination, including resolutions of any related appeals or litigation processes, on the basis of the technical merits. We record liabilities for unrecognized tax benefits in accordance with ASC 740 and adjust these liabilities when our judgment changes as a result of the evaluation of new information not previously available. Because of the complexity of some of these uncertainties, the ultimate resolution may differ from our current estimate of the liabilities for unrecognized tax benefits. These differences are reflected as increases or decreases in income tax expense in the period in which new information becomes available. The Company recognizes the accrual of interest on uncertain tax positions and penalties in income tax provision on the consolidated statements of income.

#### *Fair Values of Financial Instruments*

All of the instruments within cash equivalents and investments in securities are measured at fair value.

The Company’s assets and liabilities are categorized based upon a fair value hierarchy. See Note 5, Fair Value, for further details on the fair value hierarchy.

Cash equivalents and investments in securities are generally valued based on quoted prices from an exchange. To the extent these securities are actively traded, valuation adjustments are not applied, and they are categorized in Level 1 of the fair value hierarchy. Securities categorized in Level 2 investments are valued using other observable inputs. Nonpublic and infrequently traded investments are included in Level 3 of the fair value hierarchy because significant inputs to measure fair value are unobservable.

The Company uses a discounted cash flow analysis when determining the fair value of privately issued preferred securities of closed-end funds that are categorized as Level 3. Projected cash flows in the discounted cash flow analysis represent the relevant security’s dividend rate plus the assumption of full principal repayment at the preferred security’s earliest available redemption date.

#### *Management Fee*

Management fee expense is incentive-based and entirely variable compensation in the amount of 10% of the aggregate pre-tax profits before management fee which is paid to Mr. Gabelli or his designee for acting as CEO pursuant to his 2008 Employment Agreement so long as he is an executive of GAMI and devotes the substantial majority of his working time to the business.

#### *Stock Based Compensation*

The Company maintains a stock award and incentive plan approved by the shareholders (the “Plan”). The Company has granted stock awards, in the form of restricted stock awards (“RSAs”) and phantom RSAs to teammates and stock options to board members, which were recommended by the Company’s Chairman, who did not receive an RSA, phantom RSA, or option award, and approved by a committee of GAMI’s board of directors (the “Board of Directors”) responsible for administering the Plan (“Compensation Committee”). The Company’s stock-based RSA and option compensation provided to teammates and board members is accounted for as an equity award based on fair value. The Company’s phantom RSA compensation provided to teammates is accounted for as a liability award based on fair value and is adjusted for changes in the Company’s stock price at each reporting date, with mark to market adjustments and cumulative dividends declared recognized in compensation in the consolidated results of operations.

The estimated fair value of RSAs and phantom RSAs is determined by using the closing price of Class A Stock on the grant date and the balance sheet date, respectively. The total expense, which is reduced by estimated forfeitures, is recognized over the vesting period for these awards, which is 30% over three years from the date of grant and 70% over five years from the date of grant. The forfeiture rate is determined by reviewing historical forfeiture rates for previous stock-based compensation grants and is reviewed and updated quarterly, if necessary. During the vesting period, dividends to RSA and phantom RSA holders are held for them until the vesting dates and are forfeited if the grantee is no longer employed by the Company on the vesting dates. Dividends declared on these RSAs and phantom RSAs, less estimated forfeitures, are charged to retained earnings and compensation expense, respectively, on the declaration date.

The estimated fair value of option awards on the grant date is determined using the Black Scholes option-pricing model. This sophisticated model utilizes a number of assumptions in arriving at its results, including the estimated life of the option, the risk free interest rate at the date of grant, and the volatility of the underlying common stock. The effects of changing any of the assumptions or factors employed by the Black Scholes model may result in a significantly different valuation for the options. The total expense based on the grant date fair value, which is reduced by estimated forfeitures, is recognized over the vesting period for these awards, which is 75% over three years from the date of grant and 25% over four years from date of grant. The forfeiture rate is determined by reviewing historical forfeiture rates for previous stock-based compensation grants and is reviewed and updated quarterly, if necessary.

#### *Concentration of Credit Risk*

Financial instruments that potentially subject the Company to concentrations of credit risk consist primarily of cash and cash equivalents and receivable from brokers. The Company maintains cash and cash equivalents primarily in The Gabelli U.S. Treasury Money Market Fund, which invests fully in instruments issued by the U.S. government, and has receivables from brokers with various brokers and financial institutions, where these balances can exceed the federally insured limit. The concentration of credit risk with respect to advisory fees receivable is generally limited due to the short payment terms extended to clients by the Company. In addition, the credit risk is further limited by virtue of the fact that no single advisory relationship provided over 10% of the total revenue of the Company during 2025, 2024, or 2023. All short-term investments in U.S. Treasury Bills, investments in securities, and investments in fixed income securities are held at third party brokers or custodians.

#### *Credit Losses*

The Company measures all expected credit losses for financial assets held at the reporting date based on historical experience, current conditions, and reasonable and supportable forecasts. The allowance for credit losses is subject to judgment. Due to the short-term nature of the Company's receivables, the Company determined there was minimal credit risk inherent in the Company's financial assets. For the years ended December 31, 2025, 2024, and 2023, there were no credit losses for newly recognized financial assets or changes in the estimate of expected credit losses in the consolidated statements of income.

#### *Business Segment*

The Company operates in one business segment, the investment advisory and asset management business. The Company conducts its business principally through Gabelli Funds (Funds) and GAMCO Asset (Institutional and PWM). The distribution of the open-end Funds and underwriting of those Funds is conducted through G.distributors. The Company has identified the Office of the CEO, comprised of the Co-CEOs of GAMI, as the chief operating decision maker ("CODM"), who uses segment expenses, the most significant of which include compensation expense, and net income in the consolidated statements of income to evaluate the results of the business to manage the Company. The Company's operations constitute a single operating segment and, therefore, a single reportable segment, because the CODM manages the business activities using information of the Company as a whole. The accounting policies used to measure the profit and loss of the segment are the same as those described in Note 2, Significant Accounting Policies.

#### *Recent Accounting Developments*

In December 2023, the FASB issued ASU No. 2023-09, *Improvements to Income Tax Disclosures (Topic 740)* ("ASU 2023-09"), which requires greater disaggregation of income tax disclosures related to a reporting entity's effective tax rate reconciliation as well as additional information on income taxes paid. ASU 2023-09 was applied retroactively and was effective for annual periods beginning after December 15, 2024, and was adopted without a material impact on the Company's consolidated financial statements or related disclosures.

In November 2024, the FASB issued ASU No. 2024-03, *Income Statement—Reporting Comprehensive Income—Expense Disaggregation Disclosures (Subtopic 220-40): Disaggregation of Income Statement Expenses* ("ASU 2024-03"), which requires greater disaggregation of expense disclosures related to a reporting entity's employee compensation, depreciation, amortization, and selling expenses. ASU 2024-03 is effective on a prospective basis for annual periods beginning after December 15, 2026 and interim periods beginning after December 15, 2027. Early adoption is also permitted for annual financial statements that have not yet been issued or made available for issuance. The Company is currently assessing the impact of adopting this guidance, however it is not expected to have a material impact on the Company's consolidated financial statements or related disclosures.

## *Recently Enacted Tax Legislation*

On July 4, 2025, the One Big Beautiful Bill Act (the “OBBBA”) was signed into law, with certain provisions effective in 2025 and others implemented through 2027. The Company evaluated the impact of the OBBBA, and it has no material impact on its consolidated financial statements and disclosures.

### **3. Revenue Recognition**

In all cases for all revenue streams discussed below, the revenue generated is from a single transaction price and there is no need to allocate the amounts across more than a single revenue stream. The customer for all revenues derived from Funds described in detail below has been determined to be each Fund itself and not the ultimate underlying investor in each Fund.

Significant judgments that affect the amounts and timing of revenue recognition:

The Company’s analysis of the timing of revenue recognition for each revenue stream is based upon an analysis of the current terms of each contract. Performance obligations could, however, change from time to time if and when existing contracts are modified or new contracts are entered into. These changes could potentially affect the timing of satisfaction of performance obligations, the determination of the transaction price, and the allocation of the price to performance obligations. In the case of the revenue streams discussed below, the performance obligation is satisfied either at a point in time or over time. For incentive fee revenues, the performance obligation (advising a client portfolio) is satisfied over time, while the recognition of revenues effectively occurs at the end of the measurement period as defined within the contract, as such amounts are subject to reduction to zero on the date where the measurement period ends even if the performance benchmarks were exceeded during the intervening period. The judgments outlined below, where the determination as to these factors is discussed in detail, are continually reviewed and monitored by the Company when new contracts or contract modifications occur. Transaction price is in all instances formulaic and not subject to significant (or any) judgment.

#### *Advisory Fee Revenues*

Advisory fees for Funds, sub-advisory accounts, and the SICAV are earned based on predetermined percentages of the average net assets of the individual Funds and are recognized as revenues as the related services are performed. Fees for open-end Funds, one non-U.S. closed-end Fund, sub-advisory accounts, and the SICAV are computed on a daily basis based on average daily net AUM. Fees for U.S. closed-end Funds are computed on average weekly net AUM. These fees are received in cash after the end of each monthly period within 30 days. The revenue recognition occurs ratably as the performance obligation (advising the Fund) is met continuously over time. There is a risk of non-payment and, therefore, a credit loss on these receivables is possible at each reporting date. There were no such credit losses for the periods presented.

Advisory fees for Institutional and PWM accounts are earned based on predetermined percentages of the AUM and are generally computed quarterly based on account values at the end of the preceding quarter. The revenue recognition occurs daily as the performance obligation (advising the client portfolio) is met continuously. These fees are received in cash, typically within 60 days of the client being billed. There is a risk of non-payment and, therefore, a credit loss on these receivables is possible at each reporting date. There were no such credit losses for the periods presented.

#### *Performance Correlated and Conditional Revenues*

Investment advisory fees are earned on a portion of some closed-end Funds’ preferred shares at year-end if the total return to common shareholders of the respective closed-end Fund for the year exceeds the dividend rate of the preferred shares. These fees are recognized at the end of the measurement period, which coincides with the calendar year. These fees would also be earned and the contract period ended at any interim point in time that the respective preferred shares are redeemed. These fees are received in cash after the end of each annual measurement period, within 30 days.

The Company earns an incentive fee from two closed-end Funds. For The GDL Fund (GDL), there is an incentive fee, which is earned and recognized as of the end of each calendar year and varies to the extent the total return of the Fund is in excess of the ICE Bank of America Merrill Lynch 3-month U.S. Treasury Bill Index total return. For the Gabelli Merchant Partners Plc (GMP), there is an incentive fee which is earned and recognized as of the end of each measurement period, June 30th, and varies to the extent the total return of the Fund is in excess of twice the rate of return of the 13-week Treasury Bill over the performance period.

In all cases of the incentive fees, because of the variable nature of the consideration, revenue recognition is delayed until it is probable that a significant reversal in the amount of cumulative revenue recognized will not occur, which is generally when the uncertainty associated with the variable consideration is subsequently resolved (for example, the measurement period has concluded and the hurdle

rate has been exceeded). There is a risk of non-payment and, therefore, a credit loss on these receivables is possible at each reporting date. There were no such credit losses for the periods presented.

#### *Distribution Fees and Other Income*

Distribution fees and other income primarily includes distribution fee revenue earned in accordance with Rule 12b-1 of the Company Act along with sales charges and underwriting fees associated with the sale of the class A shares of open-end Funds. Distribution fees are computed based on average daily net assets of certain classes of each Fund and are recognized during the period in which they are earned. These fees are received in cash after the end of each monthly period within 30 days. In evaluating the appropriate timing of the recognition of these fees, the Company applied the guidance on up-front fees to determine whether such fees are related to the transfer of a promised service (a distinct performance obligation). The Company's conclusion is that the service being provided by G.distributors to the customer in exchange for the fee is for the initial distribution of certain classes of the open-end Funds and is completed at the time of each respective sale. Any fixed amounts are recognized on the trade date and variable amounts are recognized to the extent it is probable that a significant revenue reversal will not occur once the uncertainty is resolved. For variable amounts, as the uncertainty is dependent on the value of the shares at future points in time as well as the length of time the investor remains in the Fund, both of which are highly susceptible to factors outside the Company's influence, the Company does not believe that it can overcome this constraint until the market value of the Fund and the investor activities are known, which are generally monthly. Sales charges and underwriting fees associated with the sale of certain classes of the open-end Funds are recognized on the trade date of the sale of the respective shares. There is a risk of non-payment and, therefore, a credit loss on these receivables is possible at each reporting date. There were no such credit losses for the periods presented.

Effective January 1, 2024, as a result of the amended agreement with GCIA in relation to the GAMCO Merger Arbitrage SICAV (the "Sub-Fund"), the Company earns an annual administrative and accounting services fee equal to the sum of the following: (a) a fixed amount of \$45,000; (b) a variable amount equal to 0.05% (5 basis points) of the first \$500 million of average daily net assets of the Sub-Fund; and (c) a variable amount equal to 0.025% (2.5 basis points) of the balance of average daily net assets of the Sub-Fund in excess of \$500 million. The revenues associated with these fees are included in distribution fees and other income on the consolidated statements of income.

#### *Revenue Disaggregated*

The following table presents the Company's revenue disaggregated by account type (in thousands):

	<b>Years Ended December 31,</b>		
	<b>2025</b>	<b>2024</b>	<b>2023</b>
<b>Investment advisory and incentive fees:</b>			
Open-end Funds	\$ 89,504	\$ 83,157	\$ 80,540
Closed-end Funds	74,323	70,300	66,696
Institutional & Private Wealth Management	63,217	60,607	59,727
Sub-advisory accounts	635	916	1,308
SICAV	38	19	6,882
Performance-based	2,537	94	2,016
Total investment advisory and incentive fees	230,254	215,093	217,169
Distribution fees and other income	14,919	16,304	18,696
Total revenues	\$ 245,173	\$ 231,397	\$ 235,865

#### 4. Investments

Investments in securities at December 31, 2025 and 2024 consisted of the following (in thousands):

	December 31, 2025		December 31, 2024	
	Cost	Estimated Fair Value	Cost	Estimated Fair Value
Investments in securities:				
Closed-end Funds <sup>(a)</sup>	\$ 53,284	\$ 53,304	\$ 22,124	\$ 22,121
Actively managed ETFs	35,871	35,988	17,022	23,098
Common stocks	20,807	16,061	17,532	9,173
Open-end funds	15,268	15,960	6,161	6,158
Other	160	175	55	100
Total investments in securities	\$ 125,390	\$ 121,488	\$ 62,894	\$ 60,650

(a) Includes \$52,500 and \$21,500, respectively, of privately issued, puttable, and callable preferred securities, of which \$50,000 and \$19,000, respectively, are subject to mandatory redemption, issued by the closed-end Funds at December 31, 2025 and 2024, respectively.

Short-term investments in U.S. Treasury Bills and investments in foreign fixed maturity securities, which are HTM, at December 31, 2025 and 2024 consisted of the following (in thousands):

	December 31, 2025			
	Amortized Cost	Gross Unrealized Holding Gains	Gross Unrealized Holding Losses	Estimated Fair Value
Short-term investments in U.S. Treasury Bills:				
U.S. Treasury Bills	\$ 49,463	\$ 28	\$ -	\$ 49,491
Total short-term investments in U.S. Treasury Bills	\$ 49,463	\$ 28	\$ -	\$ 49,491

Investments in fixed maturity securities:

U.K. gilts	\$ 8,072	\$ -	\$ (137)	\$ 7,935
Total investments in fixed maturity securities	\$ 8,072	\$ -	\$ (137)	\$ 7,935

	December 31, 2024			
	Amortized Cost	Gross Unrealized Holding Gains	Gross Unrealized Holding Losses	Estimated Fair Value
Short-term investments in U.S. Treasury Bills:				
U.S. Treasury Bills	\$ 99,216	\$ 54	\$ -	\$ 99,270
Total short-term investments in U.S. Treasury Bills	\$ 99,216	\$ 54	\$ -	\$ 99,270

Investments in fixed maturity securities:

U.K. gilts	\$ 5,657	\$ -	\$ (80)	\$ 5,577
Total investments in fixed maturity securities	\$ 5,657	\$ -	\$ (80)	\$ 5,577

The maturity dates of the U.S. Treasury Bills were all less than a year. As of December 31, 2025, the maturity dates of \$2,021 of the U.K. gilts were less than a year and \$6,051 were between one and five years. As of December 31, 2024, the maturity dates of \$2,303 of the U.K. gilts were less than a year and \$3,354 were between one and five years.

#### 5. Fair Value

All of the instruments within cash equivalents and investments in securities are measured at fair value. The Company's assets and liabilities recorded at fair value have been categorized based upon a fair value hierarchy in accordance with the FASB ASC Topic 820,

*Fair Value Measurement* (“ASC 820”), guidance on fair value measurement. The levels of the fair value hierarchy and their applicability to the Company are described below:

- Level 1 - the valuation methodology utilizes quoted prices (unadjusted) in active markets for identical assets or liabilities at the reporting date. Level 1 assets include cash equivalents, government obligations, open-end funds, closed-end funds, and listed equities.
- Level 2 - the valuation methodology utilizes inputs other than quoted prices included in Level 1 that are observable for the asset or liability, either directly or indirectly. Level 2 inputs include quoted prices for similar assets and liabilities in active markets, quoted prices for identical or similar assets or liabilities that are not active, and inputs other than quoted prices that are observable for the asset or liability, such as interest rates and yield curves that are observable at commonly-quoted intervals. Level 2 liabilities include the seller financing payable included within accrued expenses and other liabilities on the consolidated statements of financial condition, for which the Company has elected the fair value option under ASC 825-10, as management believes fair value measurement best represents the economic substance of the payable. The fair value is determined using a discounted cash flow model with observable market inputs applied to estimated future earnout payments. See Note 11.
- Level 3 - the valuation methodology utilizes unobservable inputs for the asset or liability, and includes situations where there is little, if any, market activity for the asset or liability. Level 3 assets include privately issued preferred securities of closed-end funds and contingent consideration.

The following tables summarize the Company’s assets and liabilities measured at fair value on a recurring basis by the above fair value hierarchy levels as of December 31, 2025 and 2024 (in thousands):

**Assets and Liabilities Measured at Fair Value on a Recurring Basis as of December 31, 2025**

<b>Assets</b>	<b>Quoted Prices in Active Markets for Identical Assets (Level 1)</b>	<b>Significant Other Observable Inputs (Level 2)</b>	<b>Significant Unobservable Inputs (Level 3)</b>	<b>Balance as of December 31, 2025</b>
Cash equivalents	\$ 15,726	\$ -	\$ -	\$ 15,726
<b>Investments in securities:</b>				
Actively managed ETFs	35,988	-	-	35,988
Closed-end Funds	804	-	52,500	53,304
Common stocks	16,061	-	-	16,061
Open-end funds	15,960	-	-	15,960
Other	20	-	155	175
<b>Total investments in securities</b>	<b>68,833</b>	<b>-</b>	<b>52,655</b>	<b>121,488</b>
<b>Total assets at fair value</b>	<b>\$ 84,559</b>	<b>\$ -</b>	<b>\$ 52,655</b>	<b>\$ 137,214</b>
<b>Liabilities</b>				
<b>Accrued expenses and other liabilities:</b>				
Seller financing payable	\$ -	\$ 4,027	\$ -	\$ 4,027
Contingent consideration	-	-	1,629	1,629
<b>Accrued expenses and other liabilities</b>	<b>\$ -</b>	<b>\$ 4,027</b>	<b>\$ 1,629</b>	<b>\$ 5,656</b>

## Assets and Liabilities Measured at Fair Value on a Recurring Basis as of December 31, 2024

Assets	Quoted Prices in Active Markets for Identical Assets (Level 1)	Significant Other Observable Inputs (Level 2)	Significant Unobservable Inputs (Level 3)	Balance as of December 31, 2024
Cash equivalents	\$ 16,621	\$ -	\$ -	\$ 16,621
Investments in securities:				
Actively managed ETFs	23,098	-	-	23,098
Closed-end Funds	621	-	21,500	22,121
Common stocks	9,173	-	-	9,173
Open-end funds	6,158	-	-	6,158
Other	50	-	50	100
Total investments in securities	39,100	-	21,550	60,650
Total assets at fair value	\$ 55,721	\$ -	\$ 21,550	\$ 77,271

The following tables present additional information about assets and liabilities by major categories measured at fair value on a recurring basis and for which the Company has utilized Level 3 inputs to determine fair value for the year ended December 31, 2025 and 2024:

### Changes in Level 3 Assets and Liabilities Measured at Fair Value on a Recurring Basis for the Year Ended December 31, 2025 (in thousands)

Assets	December 31, 2024 Beginning Balance	Purchases	Net transfers in and/or out of level 3	Sales	December 31, 2025 Ending Balance
Closed-end Funds	\$ 21,500	\$ 36,000	\$ -	\$ (5,000)	\$ 52,500
Other	50	105	-	-	155
<b>Total</b>	<b>\$ 21,550</b>	<b>\$ 36,105</b>	<b>\$ -</b>	<b>\$ (5,000)</b>	<b>\$ 52,655</b>
Liabilities					
Contingent Consideration	\$ -	\$ 1,814	\$ -	\$ (185)	\$ 1,629
<b>Total</b>	<b>\$ -</b>	<b>\$ 1,814</b>	<b>\$ -</b>	<b>\$ (185)</b>	<b>\$ 1,629</b>

### Changes in Level 3 Assets and Liabilities Measured at Fair Value on a Recurring Basis for the Year Ended December 31, 2024 (in thousands)

Assets	December 31, 2023 Beginning Balance	Purchases	Net transfers in and/or out of level 3	Sales	December 31, 2024 Ending Balance
Closed-end Funds	\$ 7,000	\$ 17,500	\$ -	\$ (3,000)	\$ 21,500
Other	-	50	-	-	50
<b>Total</b>	<b>\$ 7,000</b>	<b>\$ 17,550</b>	<b>\$ -</b>	<b>\$ (3,000)</b>	<b>\$ 21,550</b>

There were no transfers between any levels during the year ended December 31, 2025 and 2024.

The significant unobservable input used in the fair value measurement of each of the Company's investments in privately issued preferred securities of closed-end funds is the discount rate. The discount rate was determined using the interest rates of U.S. Treasury Bills that are held over a similar period as the preferred security. The discount rates used in the valuation of these investments as of December 31, 2025 ranged from 3.48% to 3.64% with a weighted average of 3.50%. Significant changes in the discount rate could result in a significantly lower or higher fair value measurement of these Level 3 investments.

The significant unobservable input used in the fair value measurement of the Company's contingent consideration related to Wilen Investment Management Corp. ("Wilen") (see Note 11) is the discount rate. The fair value was estimated using the discounted cash flow method, incorporating a discount rate of 15.65%. The fair value of the contingent consideration as of May 1, 2025 when acquired was approximately \$1.8 million. Based on a discounted cash flow, the remeasured fair value of the liability was determined to be

approximately \$1.6 million at December 31, 2025. For the year ended December 31, 2025, payments totaling \$0.2 million were made to Wilen, which accounted for the change in the liability.

*Fair Value Option — Seller Financing Payable*

The Company has elected the fair value option under ASC Topic 825, *Financial Instruments*, for the seller financing payable associated with the acquisition of the management contracts of the 4 Gabelli-Keeley Funds and approximately 500 Gabelli-Keeley SMAs from Keeley (see Note 11). The Company elected the fair value option for this liability because the underlying earnout payments are directly linked to future operating income attributable to the Gabelli-Keeley Funds and SMAs before deduction of management fees (“Net Earnings”) of the acquired business, making fair value measurement more representative of the economic substance of the obligation than amortized cost.

The seller financing payable was classified as Level 2 and had a fair value of \$4.0 million at December 31, 2025. The aggregate unpaid contractual obligation of the seller financing payable, representing the estimated total future earnout payments (annually through May 1, 2030) undiscounted, was \$6.0 million at December 31, 2025, of which \$5.1 million relates to Gabelli’s 85% interest and \$0.9 million relates to Keeley Partners’ 15% interest. The difference between the fair value and the aggregate undiscounted obligation reflects the discount to present value utilizing a discount rate of 12.3%. Changes in the fair value of the seller financing payable are recognized in additional paid-in capital on the consolidated statements of financial condition. For the year ended December 31, 2025, the Company recognized \$0.3 million related to changes in the fair value of the seller financing payable, included within additional paid-in capital on the consolidated statements of financial condition.

*Financial assets and liabilities not carried at fair value*

The following table presents the carrying value and fair value of the Company’s short-term investments in U.S. Treasury Bills and investments in fixed maturity securities, including the U.K. gilts investments which are carried at amortized cost remeasured in U.S. dollars, as of December 31, 2025 and 2024 (in thousands):

	December 31, 2025		December 31, 2024	
	Carrying Value	Fair Value Level 1	Carrying Value	Fair Value Level 1
U.S. Treasury Bills	\$ 49,463	\$ 49,491	\$ 99,216	\$ 99,270
U.K. gilts	8,072 <sup>(1)</sup>	7,935	5,657 <sup>(1)</sup>	5,577
Total	\$ 57,535	\$ 57,426	\$ 104,873	\$ 104,847

(1) Amortized cost at December 31, 2025 and 2024 prior to remeasurement in U.S. dollars was \$7,683 and \$5,488, respectively. The carrying value of other financial assets and liabilities approximates their fair value based on the short-term nature of these items.

## 6. Income Taxes

The provision for income taxes for the years ended December 31, 2025, 2024, and 2023 consisted of the following (in thousands):

	<u>2025</u>	<u>2024</u>	<u>2023</u>
<b>Income before income taxes</b>			
U.S.	\$ 87,023	\$ 81,303	\$ 78,117
Foreign	(167)	(158)	(203)
Income before income taxes	<u>\$ 86,856</u>	<u>\$ 81,145</u>	<u>\$ 77,914</u>
<b>Current income tax expense (benefit)</b>			
U.S. federal	\$ 15,443	\$ 16,528	\$ 10,651
State and local	(892)	1,497	1,039
Foreign	-	-	-
Current income tax expense (benefit)	<u>\$ 14,551</u>	<u>\$ 18,025</u>	<u>\$ 11,690</u>
<b>Deferred income tax expense (benefit)</b>			
U.S. federal	\$ 1,455	\$ 224	\$ 5,070
State and local	101	(34)	947
Foreign	-	-	-
Deferred income tax expense (benefit)	<u>\$ 1,556</u>	<u>\$ 190</u>	<u>\$ 6,017</u>
<b>Total income tax expense (benefit)</b>			
U.S. federal	\$ 16,898	\$ 16,752	\$ 15,721
State and local	(791)	1,463	1,986
Foreign	-	-	-
Total income tax expense (benefit)	<u>\$ 16,107</u>	<u>\$ 18,215</u>	<u>\$ 17,707</u>

The following table sets forth the reconciliation of the statutory U.S. federal corporate income tax rate to the Company's effective income tax rate for the years ended December 31, 2025, 2024, and 2023 (dollars in thousands):

	<b>December 31,</b>					
	<u>2025</u>		<u>2024</u>		<u>2023</u>	
U.S. federal statutory tax	18,240	21.0%	17,040	21.0%	16,362	21.0%
State and local income tax, net of federal benefit <sup>(1)</sup>	5,860	6.8	1,746	2.2	1,950	2.5
Change in unrecognized tax benefits	(8,208)	(9.5)	(849)	(1.1)	(590)	(0.7)
Nontaxable or nondeductible items						
Dividends received deduction	(129)	(0.2)	(80)	(0.1)	(39)	(0.1)
Other	344	0.4	358	0.4	24	-
Effective income tax rate	<u>16,107</u>	<u>18.5%</u>	<u>18,215</u>	<u>22.4%</u>	<u>17,707</u>	<u>22.7%</u>

(1) State taxes in New York make up the majority of the tax effect in this category.

The following table presents the components of the Company's income taxes paid (net of refunds) for the years ended December 31, 2025, 2024, and 2023 (dollars in thousands):

	<u>2025</u>	<u>2024</u>	<u>2023</u>
<b>U.S. federal</b>	\$ 17,869	\$ 15,986	\$ 9,335
<b>State and local</b>			
New York	2,591	681	476
Other	1,396	1,386	672
<b>Total state and local</b>	<u>3,987</u>	<u>2,067</u>	<u>1,148</u>
<b>Foreign</b>			
Other	37	35	13
<b>Total foreign</b>	<u>37</u>	<u>35</u>	<u>13</u>
<b>Total cash paid for income taxes</b>	<u>\$ 21,893</u>	<u>\$ 18,088</u>	<u>\$ 10,496</u>

Significant components of the deferred tax assets and liabilities are as follows (in thousands):

	<u>2025</u>	<u>2024</u>
Deferred tax assets:		
Investments in securities	\$ 3,182	\$ 4,989
Stock compensation expense	2,949	2,587
Deferred compensation	166	-
Capital lease obligation	983	1,157
Other	51	-
<b>Total deferred tax assets</b>	<u>7,331</u>	<u>8,733</u>
Deferred tax liabilities:		
Finance lease asset	(544)	(637)
Intangible asset amortization	(403)	(396)
Accruals	(339)	-
Fixed Assets	(114)	-
Other	(2)	(95)
<b>Total deferred tax liabilities</b>	<u>(1,402)</u>	<u>(1,128)</u>
<b>Net deferred tax assets</b>	<u>\$ 5,929</u>	<u>\$ 7,605</u>

As of December 31, 2025 and 2024, the total amount of gross liability for unrecognized tax benefits related to uncertain tax positions was approximately \$8.6 million and \$12.0 million, respectively, of which recognition of \$6.9 million and \$9.5 million, respectively, would impact the Company's effective tax rate.

A reconciliation of the beginning and ending amount of gross unrecognized tax benefits related to uncertain tax positions is as follows (in millions):

Balance at December 31, 2023	\$ 13.8
Additions based on tax positions related to the current year	0.7
Reductions for tax positions of prior years	(2.5)
<b>Balance at December 31, 2024</b>	<u>12.0</u>
Additions based on tax positions related to the current year	3.0
Settlement of a tax position	(5.0)
Reductions for tax positions of prior years	(1.4)
<b>Balance at December 31, 2025</b>	<u>\$ 8.6</u>

As of December 31, 2025 and 2024, the net liability for unrecognized tax benefits related to uncertain tax positions was \$10.4 million and \$18.7 million, respectively, and is included in accrued expenses and other liabilities on the consolidated statements of financial condition. These amounts include a liability for penalties and interest related to tax uncertainties in income taxes of approximately \$3.5 million and \$12.0 million at December 31, 2025 and 2024, respectively. The Company recorded an income tax benefit related to a decrease in its liability for interest and penalties of \$5.7 million for the year ended December 31, 2025, which is included in provision for income taxes on the consolidated statements of income. The Company recorded an income tax expense related to an increase in its liability for interest and penalties of \$0.5 million and \$0.6 million for the years ended December 31, 2024 and 2023, respectively, which is included in provision for income taxes on the consolidated statements of income.

The Company is currently being audited by New York State for years 2015 through 2021 and by Illinois for tax years 2019 and 2020. The Company is subject to future audits by New York State for all years after 2021. The Company's remaining state income tax returns are subject to future audit for varying years after 2020. The Company's Federal tax returns are subject to future audit for all years after 2021. The Company does not expect that any potential assessments will be material to its results of operations.

## 7. Earnings per Share

Basic earnings per share is calculated by dividing net income by the weighted average shares outstanding. Diluted earnings per share is calculated using the treasury stock method by dividing net income by the total weighted average shares of common stock outstanding, RSAs, and stock options, if impacts are dilutive. The computations of basic and diluted earnings per share were as follows (in thousands, except per share amounts):

	Years Ended December 31,		
	2025	2024	2023
<b>Basic:</b>			
Net income	\$ 70,749	\$ 62,930	\$ 60,207
Weighted average shares outstanding	22,340	24,369	25,286
Basic earnings per share	<u>\$ 3.17</u>	<u>\$ 2.58</u>	<u>\$ 2.38</u>
<b>Diluted:</b>			
Net income	\$ 70,749	\$ 62,930	\$ 60,207
Weighted average share outstanding	22,340	24,369	25,286
Restricted stock awards	-	-	-
Total	<u>22,340</u>	<u>24,369</u>	<u>25,286</u>
Diluted earnings per share	<u>\$ 3.17</u>	<u>\$ 2.58</u>	<u>\$ 2.38</u>

## 8. Stockholders' Equity

There were 3.0 million shares and 3.9 million shares of Class A Stock outstanding at December 31, 2025 and 2024, respectively. There were 19.0 million shares of Class B Stock outstanding at both December 31, 2025 and 2024.

At the Annual Meeting of Shareholders held on July 10, 2024, the following changes to the Company's authorized stock were approved: i) the Class A shareholders, voting together as a single class, approved an amendment to the Company's Amended and Restated Certificate of Incorporation ("Amended Certificate") to decrease the authorized number of shares of Class A Stock from 100,000,000 to 5,600,000; ii) the Class B shareholders, voting together as a single class, approved an amendment to the Company's Amended Certificate to decrease the authorized number of shares of Class B Stock from 25,000,000 to 20,000,000; and iii) the Class A and Class B shareholders, voting together, approved an amendment to the Company's Amended Certificate to eliminate the authorized shares of preferred stock. The Amended Certificate, effective July 19, 2024, was filed with the Delaware Division of Corporations.

### *Voting Rights*

The holders of Class A Stock and Class B Stock have identical rights except that (i) holders of Class A Stock are entitled to one vote per share, while holders of Class B Stock are entitled to ten votes per share, on all matters to be voted on by shareholders in general, and (ii) holders of Class A Stock are not eligible to vote on matters relating exclusively to Class B Stock and vice versa.

### *Stock Award and Incentive Plan*

The Company maintains the Plan, which is designed to provide incentives that will attract and retain individuals key to the success of GAMI through direct or indirect ownership of our common stock. A maximum of 7.5 million shares of Class A Stock have been reserved for issuance under the Plan by the Compensation Committee of the Company's Board of Directors. Benefits under the Plan may be granted in any one or a combination of stock options, stock appreciation rights, restricted stock, restricted stock units, stock awards, dividend equivalents, and other stock or cash based awards. Under the Plan, the Compensation Committee may grant RSAs, each of which entitles the grantee to one share of Class A Stock subject to restrictions, phantom RSAs, each of which entitles the grantee to the cash value of one share of Class A Stock subject to restrictions, and either incentive or nonqualified stock options, with a term not to exceed ten years from the grant date and at an exercise price that the Compensation Committee may determine, which were recommended by the Company's Chairman who did not receive any awards.

On June 1, 2023, 411,500 phantom RSAs were issued at a grant price of \$19.04 per phantom RSA. On June 21, 2024, 456,650 phantom RSAs were issued at a grant date price of \$24.50 per phantom RSA. On August 5, 2025, 497,950 phantom RSAs were issued at a grant date price of \$23.90 per phantom RSA. Phantom RSAs have similar vesting terms to the RSAs, except that the phantom RSAs will be settled in cash based on the fair value of the shares on the vesting date. Thus, the phantom RSAs were determined to be liability awards and are adjusted for changes in the Company's stock price at each reporting date, with mark to market adjustments recognized in compensation on the consolidated statement of income.

As of December 31, 2025 and 2024, there were 1,305,400 and 1,077,860, respectively, phantom RSAs outstanding with a weighted average grant price per phantom RSA of \$22.69 and \$22.66, respectively, and a liability balance, based on the closing price of the Company's Class A Stock and cumulative dividends, of \$12.2 million and \$11.2 million, respectively, included within compensation payable on the consolidated statements of financial condition. As of December 31, 2025 and 2024, 10,000 nonqualified stock options were outstanding with an exercise price of \$25.55.

On June 17, 2024, 105,540 stock-based phantom RSAs vested. On August 5, 2025, the Board of Directors accelerated the vesting relating to 239,400 of outstanding phantom RSAs effective August 15, 2025. As a result, the Company recorded an incremental \$0.8 million of stock-based compensation phantom RSA expense for 2025 that would have been recognized in future periods. For the years ended December 31, 2025, 2024, and 2023, the Company recorded approximately \$7.5 million, \$8.5 million, and \$3.1 million, respectively, in stock-based phantom RSA compensation expense, which resulted in the recognition of tax benefits of approximately \$1.9 million, \$2.1 million, and \$0.8 million, respectively.

On December 22, 2022, the Compensation Committee of GAMI accelerated the vesting relating to 70,000 of GAMI RSAs outstanding effective January 3, 2023. As a result, GAMI recorded an incremental \$0.2 million of stock-based compensation expense for 2023 that would have been recognized in future years. For the years ended December 31, 2025, 2024, and 2023, the Company recorded approximately \$0, \$0, and \$0.5 million, respectively, in stock-based non-cash RSA compensation expense, including such incremental expense from the accelerated vesting, which resulted in the recognition of tax benefits of approximately \$0, \$0, and \$0.1 million, respectively.

The total compensation costs related to non-vested phantom RSA awards to teammates, excluding the CEO who received none, not yet recognized was approximately \$18.7 million as of December 31, 2025.

### *Stock Repurchase Program*

In March 1999, the Board of Directors established a stock repurchase program (the "Stock Repurchase Program") to grant management the authority to repurchase shares of Class A Stock on behalf of the Company. Since establishing the Stock Repurchase Program, the Board of Directors has authorized additional share repurchases, including increases of 500,000 shares on both May 7, 2024 and August 6, 2024, 477,877 shares on February 4, 2025, and 500,000 on November 7, 2025. On December 16, 2024, the Board of Directors authorized the buyback of 1,150,000 shares from Associated Capital Group, Inc. ("AC"), an affiliate. Purchases may be made from time to time, at management's discretion, in the open market or in private transactions, including the use of trading plans, as well as pursuant to accelerated share repurchase programs or other share repurchase strategies. Share repurchase amounts and prices may vary after considering a variety of factors, including the Company's financial position, earnings, other alternative uses of cash, macroeconomic issues, and market conditions.

When treasury shares are retired, the Company's policy is to allocate the excess of the repurchase price over the par value of shares acquired to retained earnings. Prior to filing the Amended Certificate which resulted in the reduction of authorized shares, the Company retired 10,950,659 treasury shares. As a result of this treasury share retirement, treasury stock and retained earnings were reduced by

\$384.8 million and Class A Stock was reduced by \$8 thousand. There was no change to the total stockholders' equity as a result of this retirement.

For the years ended December 31, 2025, 2024, and 2023, the Company repurchased 913,891, 1,975,914, and 773,542 shares, respectively, at an average price per share of \$24.06, \$24.86, and \$18.80, respectively. At December 31, 2024, the total shares available under the Stock Repurchase Program to be repurchased in the future were 1,099,080. The Stock Repurchase Program has no expiry.

#### *Dividends*

During 2025, 2024, and 2023, the Company declared cash dividends of \$0.34, \$0.16 and \$0.16, respectively, per share to shareholders of Class A Stock and Class B Stock totaling \$7.6 million, \$3.8 million, and \$4.1 million, respectively. During 2024, the Company declared special dividends of \$2.20 per share to shareholders of Class A Stock and Class B Stock totaling \$53.4 million.

#### *Keeley Transaction*

As a result of becoming the advisor on May 1, 2025 to the 4 open-end funds (“the “Gabelli-Keeley Funds”) and approximately 500 separate accounts (the “Gabelli-Keeley SMAs”) from Keeley-Teton Advisors, LLC (“Keeley”), a wholly-owned subsidiary of Teton and the associated consideration paid (“Keeley Transaction”), the Company recognized the difference of \$6.6 million between the proceeds transferred and the carrying amounts of the net assets received in additional paid-in capital in Gabelli's consolidated statements of financial condition. Refer to Note 11, Related Party Transactions, for further information on the Keeley Transaction.

### **9. Goodwill and Identifiable Intangible Assets**

At December 31, 2025 and 2024, there was goodwill of \$0 and \$0.2 million, respectively maintained on the consolidated statements of financial condition related to G.distributors. For the years ended December 31, 2025, 2024, and 2023, the Company recorded a write-off of \$0.2 million, \$0, and \$0, respectively, of goodwill related to G.distributors as a result of impairment and included in other operating expenses.

The following is a summary of intangible assets on December 31, 2025 (in thousands):

	<b>Weighted Average Amortization Period (years)</b>	<b>Gross Carrying Amount</b>	<b>Accumulated Amortization</b>	<b>Impairment</b>	<b>Net Carrying Amount</b>
Customer Relationships	9-10	\$ 2,822	\$ (402)	\$ -	\$ 2,420
Fund Management Contracts - Enterprise	-	3,370	-	(2,610)	760
Fund Management Contracts - Dinsmore	-	1,661	-	-	1,661
Fund Management Contracts - Keeley	-	1,600	-	-	1,600
<b>Total</b>		<b>\$ 9,453</b>	<b>\$ (402)</b>	<b>\$ (2,610)</b>	<b>\$ 6,441</b>

The following is a summary of intangible assets on December 31, 2024 (in thousands):

	<b>Gross Carrying Amount</b>	<b>Accumulated Amortization</b>	<b>Impairment</b>	<b>Net Carrying Amount</b>
Fund Management Contracts - Enterprise	\$ 3,370	\$ -	\$ (2,610)	\$ 760
Fund Management Contracts - Dinsmore	1,661	-	-	1,661
<b>Total</b>	<b>\$ 5,031</b>	<b>\$ -</b>	<b>\$ (2,610)</b>	<b>\$ 2,421</b>

As a result of becoming the advisor to the Gabelli Enterprise Mergers and Acquisitions Fund (“Enterprise Fund”) and the Bancroft Fund Ltd. and Ellsworth Growth and Income Fund Ltd. (collectively, the “Dinsmore Funds”) and the associated consideration paid, the Company maintains identifiable intangible assets. The Enterprise Fund investment advisory agreement is next up for renewal in February 2027. The investment advisory agreements for the Dinsmore Funds are next up for renewal in August 2026. Each of these investment advisory agreements are subject to annual renewal by the respective fund's board of directors, which the Company expects to be renewed, and the Company does not expect to incur additional expense as a result, which is consistent with other investment advisory agreements entered into by the Company.

For the years ended December 31, 2025, 2024, and 2023, annual assessments of the recoverability of the intangible assets were performed which resulted in \$0, \$0, and \$0.2 million, respectively, of impairment charges to the identifiable intangible asset related to the Enterprise Fund included within other operating expenses on the consolidated statements of income. There was no impairment charge recorded to the identifiable intangible asset related to the Dinsmore Funds.

As a result of the Keeley Transaction, the Company maintains an identifiable intangible asset of \$4.0 million, including approximately \$2.4 million of customer relationships, at December 31, 2025 and \$0 at December 31, 2024. The investment advisory agreements for the Gabelli-Keeley Funds are next up for renewal in August 2026. For the year ended December 31, 2025, the Company recorded \$0.4 million amortization expense of customer relationships which is included in other operating expenses on the consolidated statements of operations. There was no amortization expense for the years ended December 31, 2024 and 2023. Refer to Note 11, Related Party Transactions, for further information on the Keeley Transaction. There was no impairment of definite-lived intangibles recognized for the years ended December 31, 2025, 2024 or 2023. Estimated amortization expense for customer relationships over its remaining 9 year estimated life is approximately \$0.3 million for each of 2026, 2027, and 2028, and \$1.6 million thereafter.

## **10. Commitments and Contingencies**

From time to time, the Company may be named in legal actions and proceedings in the normal course of business. These actions may seek substantial or indeterminate compensatory as well as punitive damages or injunctive relief. The Company is also subject to governmental or regulatory examinations or investigations. Liabilities for loss contingencies arising from claims, assessments, litigation, fines and penalties, and other sources are recorded when it is probable that a liability has been incurred and the amount can be reasonably estimated. There are currently no such matters pending that the Company believes could have a material adverse effect on its consolidated financial condition, operations, or cash flows at December 31, 2025.

### *Leases*

On December 5, 1997, the Company entered into a fifteen-year lease, expiring on April 30, 2013, of an approximately 60,000 square foot building located at One Corporate Center, Rye, New York (the "Building") from M4E, LLC ("M4E"), an entity controlled by members of the Chairman's family. On June 11, 2013, the Company modified and extended its lease of the Building with M4E. The lease term was extended to December 31, 2028 and the base rental remained at \$18 per square foot, or \$1.1 million, for 2014. For each subsequent year through December 31, 2028, the base rental is determined by the change in the consumer price index for the New York Metropolitan Area for November of the immediate prior year with the base period as November 2008 for the New York Metropolitan Area.

This lease has been accounted for as a finance lease under FASB ASC Topic 842 as it transfers substantially all the benefits and risks of ownership to the Company. The Company has recorded the leased property as an asset and a lease obligation for the present value of the obligation of the leased property. The leased property is amortized on a straight-line basis from the date of the most recent extension to the end of the lease. The lease obligation is amortized over the same term using the interest method of accounting. Finance lease improvements are amortized from the date of expenditure through the end of the lease term or the useful life, whichever is shorter, on a straight-line basis. The lease provides that all operating expenses relating to the property (such as property taxes, utilities, and maintenance) are to be paid by the lessee, GAMI. These are recognized as expenses in the periods in which they are incurred. Accumulated amortization on the leased property at December 31, 2025 and 2024 was approximately \$6.5 million and \$6.3 million, respectively.

The Company also rents office space under operating leases, which expire at various dates through December 31, 2030.

The following table summarizes the Company's leases for the years presented (in thousands, except lease term and discount rate):

	Years Ended December 31,		
	2025	2024	2023
Finance lease cost - interest expense	\$ 995	\$ 1,026	\$ 1,061
Finance lease cost - amortization of right-of-use asset	48	48	308
Operating lease cost	431	448	492
Sublease income	(147)	(144)	(142)
<b>Total lease cost</b>	<b>\$ 1,327</b>	<b>\$ 1,378</b>	<b>\$ 1,719</b>
<b>Other information:</b>			
Cash paid for amounts included in the measurement of lease liabilities			
Operating cash flows from operating leases	\$ 234	\$ 358	\$ 306
Financing cash flows from finance lease	553	465	385
<b>Total cash paid for amounts included in the measurement of lease liabilities</b>	<b>\$ 787</b>	<b>\$ 823</b>	<b>\$ 691</b>
Right-of-use assets obtained in exchange for new operating lease liabilities	\$ -	\$ 626	\$ -
Weighted average remaining lease term—finance lease (years)	3.0	4.0	5.0
Weighted average remaining lease term—operating leases (years)	3.3	4.3	3.6
Weighted average discount rate—finance lease	19.1%	19.1%	19.1%
Weighted average discount rate—operating leases	6.7%	6.7%	5.0%

The finance lease right-of-use asset, net of amortization, at December 31, 2025 and 2024 was \$0.6 million and \$0.8 million, respectively, and the operating right-of-use assets, net of amortization, were \$1.7 million and \$1.9 million, respectively, and these right-of-use assets were included within finance lease in the consolidated statements of financial condition.

The following table summarizes the maturities of lease liabilities at December 31, 2025 (in thousands):

Year ending December 31,	Finance Leases	Operating Leases	Total Leases
2026	1,595	640	\$ 2,235
2027	1,080	557	1,637
2028	1,080	545	1,625
2029	-	428	428
2030	-	343	343
<b>Total lease payments</b>	<b>\$ 3,755</b>	<b>\$ 2,513</b>	<b>\$ 6,268</b>
Less imputed interest	(1,302)	(716)	(2,018)
<b>Total lease liabilities</b>	<b>\$ 2,453</b>	<b>\$ 1,797</b>	<b>\$ 4,250</b>

The finance lease contains an escalation clause tied to the change in the New York Metropolitan Area Consumer Price Index which may cause the future minimum payments to exceed the amounts shown above. Future minimum lease payments have not been reduced by related minimum future sublease rentals of approximately \$0.6 million due over the next three years, which are due from affiliated entities.

## 11. Related Party Transactions

The following is a summary of certain related party transactions.

As of December 31, 2025, GGCP which is majority-owned and controlled by Mr. Gabelli, owns a majority of the outstanding shares of the Company's Class B Stock. As of December 31, 2025, such ownership represented approximately 92% of the combined voting power of the outstanding common stock and approximately 80% of the equity interest. On December 29, 2025, GGCP Holdings, LLC ("GGCP Holdings"), a subsidiary of GGCP, which is majority-owned by Mr. Gabelli, transferred its ownership of the Company to GGCP. Prior to December 29, 2025, GGCP Holdings owned a majority of the outstanding shares of the Company's Class B Stock. As of December 31, 2024, such ownership represented approximately 94% of the combined voting power of the outstanding common stock and approximately 80% of the equity interest. As of December 31, 2025 and 2024, AC and its subsidiaries own approximately 0.4 million and 0.7 million shares of the Company's Class A Stock, respectively, representing approximately 0.2% and 0.4% of the combined voting

power, respectively, and approximately 2% and 3% of the equity interest, respectively. On December 16, 2024, the Company repurchased 1.15 million shares of Class A Stock from AC at \$26.45 for \$30.4 million. AC is majority-owned by GGCP. Accordingly, Mr. Gabelli is deemed to control GAMI.

### *Leases*

The Company leases the Building from M4E, an entity controlled by members of the Chairman's family. See Leases within Note 10 for further details.

The Company sub-leases approximately 4,900 square feet effective January 1, 2022 in the Building to LICT Corporation ("LICT"), a company for which Mr. Gabelli serves as Chairman and Co-CEO, which pays rent at the base rate of \$28 per square foot plus \$3 per square foot for electricity, subject to adjustment for increases in taxes and other operating expenses. The total amounts received in each of 2025, 2024, and 2023 for rent and other expenses under this lease were \$0.2 million, which were recorded in other operating expenses as a credit on the consolidated statements of income. On May 20, 2021, the Company and LICT further agreed to extend the term of the sub-lease until December 31, 2028 on the same terms and conditions. Effective August 5, 2020, the Company sub-leased approximately 5,200 square feet in the Building to AC. AC pays rent at the base rate of \$22.32 per square foot plus \$3 per square foot for electricity. The total amount received in each of 2025, 2024, and 2023 for rent and other expenses under this lease was \$0.1 million, which was recorded in distribution fees and other income on the consolidated statements of income. Effective August 5, 2020, the Company sub-leased approximately 2,800 square feet in the Building to Morgan Group Holding Co., a subsidiary of GGCP. The total amount received in each of 2025, 2024, and 2023 for rent and other expenses under this lease was \$0.1 million, which was recorded in distribution fees and other income on the consolidated statements of income.

Effective September 1, 2019, the Company leases office space located at 191 Mason Street, Greenwich, CT from AC for its principal office. During 2025, 2024, 2023, the Company paid AC \$0.1 million in rent for each year.

Effective January 1, 2021, the Company leases office space located at 3 St. James's Place, London from AC. Effective January 1, 2024, the terms of the lease were changed to U.S. dollars from U.K. pounds. For the years ended December 31, 2025, 2024, and 2023, the Company paid AC \$0.3 million, \$0.3 million, and \$0.4 million (£0.3 million), respectively, in rent.

### *Investment Advisory Services*

The Company serves as the investment advisor for the Funds and earns advisory fees based on predetermined percentages of the average net assets of the Funds, discussed within Note 3, Revenue Recognition. In addition, G.distributors has entered into distribution agreements with each of the Funds. It also distributes funds managed by Teton and its affiliates. As principal distributor, G.distributors incurs certain promotional and distribution costs related to the sale of Fund shares, for which it receives a distribution fee from the Funds or reimbursement from the investment advisor. For 2025, 2024, and 2023, the Company received \$12.9 million, \$14.4 million, and \$17.0 million, respectively, in distributions fees. Advisory and distribution fees receivable from the Funds were approximately \$26.0 million and \$15.3 million at December 31, 2025 and 2024, respectively.

Effective January 1, 2024, as a result of the amended agreement with GCIA in relation to the Sub-Fund, the Company pays to GCIA 100% of the gross advisory and incentive fee revenues from the Sub-Fund and earns an annual administrative and accounting services fee equal to the sum of the following: (a) a fixed amount of \$45,000; (b) a variable amount equal to 0.05% (5 basis points) of the first \$500 million of average daily net assets of the Sub-Fund; and (c) a variable amount equal to 0.025% (2.5 basis points) of the balance of average daily net assets of the Sub-Fund in excess of \$500 million. The administrative and accounting service fee revenues are included in distribution fees and other income on the consolidated statements of income. The gross Sub-Fund advisory and incentive fee revenues and corresponding payments to GCIA are recorded net on the Company's consolidated financial statements, while the receivable from the Sub-Fund and the payable to GCIA are recorded in investment advisory and incentive fees receivable and payable to affiliates, respectively. The amount receivable from the Sub-Fund and payable to GCIA was \$8.6 million and \$0.3 million at December 31, 2025 and 2024, respectively. The amount Prior to January 1, 2024, Gabelli Funds paid to GCIA 90% of the net revenues received by Gabelli Funds related to being the advisor to the SICAV. Net revenues are defined as gross advisory fees less expenses related to payouts and expenses of the SICAV paid by Gabelli Funds. The amounts paid by GCIA to Gabelli Funds for 2025, 2024, and 2023 were \$0.3 million, \$0.2 million, and \$3.8 million, respectively, and were included in other operating expenses on the consolidated statements of income.

The Company has entered into agreements to provide advisory and administrative services to MJG Associates, Inc., which is wholly-owned by Mr. Gabelli, with respect to the private investment funds managed by them. Pursuant to such agreements, MJG Associates, Inc. paid GAMI \$0.01 million (excluding reimbursement of expenses) for each of the years 2025, 2024, and 2023.

## *Compensation*

Immediately preceding the initial public offering in February 1999, GAMI and the Company's Chairman and Co-CEO, Mr. Gabelli, entered into an employment agreement. On February 6, 2008, Mr. Gabelli entered into an amended and restated employment agreement, the 2008 Employment Agreement, with the Company, which was initially approved by the Company's shareholders on November 30, 2007 and approved again on May 6, 2011, May 5, 2015, and June 5, 2020.

Under the terms of this agreement and consistent with the Firm's practice since its inception in 1977, Mr. Gabelli is entitled to receive a percentage of revenues or net operating contribution, which are substantially derived from AUM, as compensation relating to or generated by the following activities: (i) managing or overseeing the management of various investment companies, (ii) attracting mutual fund shareholders, (iii) attracting and managing Institutional and PWM clients, and (iv) otherwise generating revenues for the Company. Such payments are made in a manner and at rates as agreed to from time to time by the Company, which rates have been and generally will be the same as those received by other professionals at GAMI performing similar services. With respect to the Institutional and PWM and Funds advisory businesses, the Company pays out up to 40% of the revenues or net operating contribution to the portfolio managers and marketing teammates who introduce, service, or generate such business, with payments involving the Institutional and PWM accounts being typically based on revenues and payments involving the Funds being typically based on net operating contribution ("portfolio and relationship compensation").

Mr. Gabelli has agreed that while he is employed by the Company, he will not provide investment management services outside of GAMI, except for certain permitted accounts as defined under the agreement. The 2008 Employment Agreement may not be amended without the approval of the Compensation Committee and Mr. Gabelli.

Mr. Gabelli receives compensation in the form of a management fee for managing the Company. The management fee is incentive-based and entirely variable compensation in the amount of 10% of the aggregate pre-tax profits, which is paid to Mr. Gabelli or his designee for acting as CEO pursuant to his 2008 Employment Agreement so long as he is an executive of GAMI and devotes the substantial majority of his working time to the business. In accordance with his 2008 Employment Agreement, he has allocated \$3.0 million, \$4.8 million, and \$4.4 million of his management fee to certain other teammates of the Company in 2025, 2024, and 2023, respectively.

During 2025, Mr. Gabelli elected to waive \$8.2 million of his portfolio and relationship compensation that he would otherwise have been entitled to under his 2008 Employment Agreement relating to the period of March 1, 2025 to May 31, 2025. In addition, Mr. Gabelli elected to waive \$1.1 million of his Incentive Management Fee that he would otherwise have been entitled to for the month of December 2025. During 2024, Mr. Gabelli elected to waive \$8.4 million of his portfolio and relationship compensation that he would otherwise have been entitled to under his 2008 Employment Agreement relating to the period of August 1, 2024 to October 31, 2024. There was no waiver for the year ended December 31, 2023.

## *Other*

GAMI and Teton entered into a transitional administrative and management service agreement ("Sub-administration Agreement") in connection with the spin-off of Teton from GAMI that formalized certain arrangements. Effective January 1, 2022, Teton and GAMI renegotiated the terms of the Sub-administration Agreement to 0.05% on the first \$500 million in average net assets, and 0.03% on average net assets in excess of \$500 million. Additionally, Teton paid to GAMI an administrative services fee of \$4,167 per month. During each of 2025, 2024, and 2023, there was \$0.1 million, \$0.2 million, and \$0.2 million, respectively, included in distribution fees and other income on the consolidated statements of income.

GAMI and Keeley Funds, Inc. ("Keeley Funds") entered into a fund administration servicing agreement on October 1, 2018 to provide fund services to Keeley Funds. Under the agreement, Keeley Funds pays to GAMI \$24 thousand annually for legal administration, a variable 0.025% on the first \$1.5 billion of average net assets of the mutual funds managed by Keeley Funds, 0.015% on the next \$6.5 billion managed by Keeley Funds, 0.0125% on the balance of the funds managed by Keeley Funds, as well as 0.0025% on the funds managed by Keeley Funds for daily compliance testing. During each of 2025, 2024, and 2023, there was \$0.1 million included in distribution fees and other income on the consolidated statements of income.

On May 1, 2025, Gabelli completed the acquisition of the management contracts of the 4 Gabelli-Keeley Funds and approximately 500 Gabelli-Keeley SMAs from Keeley, a related party. The Chicago-based Keeley research, portfolio management, and client service teammates have joined Gabelli and continue to manage and service these assets. Payment for the Keeley Transaction was made 85% by Gabelli and 15% by Keeley Partners LLC, an unaffiliated entity ("Keeley Partners"). This payment was effected through a new subsidiary, Gabelli-Keeley, with Keeley Partners' interest determined to be a liability as a decrease in ownership without an accompanying change of control. As a result of common control of both Gabelli and Teton by GGCP Holdings, a wholly-owned

subsidiary of GGCP, Gabelli recognized the assets and liabilities transferred at their carrying amounts in the accounts of Teton at the date of transfer. The difference between the proceeds transferred and the carrying amounts of the net assets received was recognized in additional paid-in capital in Gabelli's consolidated statements of financial condition. There was no step-up in asset values, creation of new goodwill, nor any gain or loss recognized. The payment structure included \$5.5 million total upfront (split 85% Gabelli and 15% Keeley Partners), plus earn-out payments comprised of 90% of Net Earnings, from the acquired Funds/SMAs at the end of years 1 and 2, 60% of Net Earnings from the acquired Gabelli-Keeley Funds/SMAs at the end of years 3 and 4, and 50% of Net Earnings from the acquired Gabelli-Keeley Funds/SMAs at the end of year 5, with a true-up payment at the end of year 5, if required, to ensure at least \$11.5 million total payment ("Floor"). The earnout is currently estimated at the Floor, discounted to present value, but could potentially be considerably higher due to uncertain market conditions related to the acquired assets. Keeley Partners has a put option available at the end of years 3 and 5 at Keeley Partners' cost, which is not mandatorily redeemable. The put option does not meet the definition of a derivative under ASC 815, *Financial Instruments - Derivatives and Hedging*, as it lacks the net settlement characteristic required for derivative classification and, accordingly, is not carried at fair value or marked to market each reporting period. In the current estimation of Gabelli's management, there is not a high likelihood of the put occurring. The carrying amount of the intangible assets transferred from Teton to Gabelli as of the Closing Date was approximately \$4.4 million, based on Teton's historical book values. Revenue and expenses from the transferred assets will be reported entirely by Gabelli, with a 15% allocation to Keeley Partners classified as interest expense in the consolidated statements of income. As a result of the facts and circumstances underlying the acquisition, including the fact that Gabelli and Keeley are under common control, ASC 250, *Accounting Changes and Error Corrections*, indicates that such acquisition represents a "change in reporting entity" and as a result, Gabelli was required to recast all financial information included in the financial statements to reflect the operations of Keeley as consolidated for all periods presented, including those prior to the date of the acquisition. The assets and results of Keeley prior to the acquisition have not been recast due to immateriality.

Additionally, on August 5, 2024, Teton completed an asset acquisition of Wilen, a company providing investment management services. These Wilen accounts were included in the Gabelli-Keeley SMAs acquired. Teton's purchase price was based on a 10-year earnout of the advisory fees related to the acquired assets. No payment was required at the initial closing of the transaction. Teton was required to make quarterly payments to the seller, 45 days after each quarter-end, based on an agreed-upon payout framework. At May 1, 2025, Gabelli recorded a liability for the remaining Wilen earnout acquired, which was approximately \$1.8 million. This liability was estimated at \$1.6 million at December 31, 2025 and was included in accrued expenses and other liabilities on the Consolidated Statements of Financial Condition. For the year ended December 31, 2025, payments totaling \$0.2 million were made to Wilen. The earnout could potentially be considerably higher or lower due to uncertain market conditions related to the acquired assets.

GAMI and AC entered into a transitional administrative and management services agreement in connection with the spin-off of AC from GAMI on November 30, 2015. The agreement calls for GAMI to provide to AC certain administrative services including but not limited to: human resources, compliance, legal, payroll, information technology, and operations. All services provided under the agreement by GAMI to AC or by AC to GAMI are charged at cost. The agreement is terminable by either party on 30 days' prior written notice to the other party and has a term of twelve months.

On August 6, 2024, the Board of Directors approved the creation of a tax-exempt not-for-profit corporation, Gabelli Funds Foundation, Inc., and authorized charitable contributions of \$5.0 million to this related party. On November 7, 2025, the Board of Directors authorized an additional \$2.5 million contribution to the private foundation. During 2025 and 2024, these authorized and paid contributions of \$2.5 million and \$5.0 million, respectively, were included in charitable giving contribution on the consolidated statements of income.

## 12. Regulatory Requirements

The Company's broker-dealer subsidiary, G.distributors, is subject to certain net capital requirements. G.distributors computes its net capital under the alternative method permitted under SEC Rule 15c3-1 under the Securities Exchange Act of 1934, as amended, which requires minimum net capital of the greater of \$250,000 or 2% of the aggregate debit items. The minimum net capital requirement was \$250,000 for the broker-dealer at December 31, 2025 and 2024. On February 25, 2025 and December 29, 2025, GAMCO Asset made a contribution to G.distributors of \$2.5 million. At December 31, 2025 and 2024, G.distributors had net capital, as defined in the Rule, of approximately \$2.5 million and \$0.7 million, respectively, exceeding the regulatory requirement by approximately \$2.2 million and \$0.5 million, respectively.

The Company's subsidiary, GAMCO Asset Management (UK) Limited is authorized and regulated by the Financial Conduct Authority ("FCA"). In February 2011, GAMCO Asset Management (UK) Limited increased its permitted license with the FCA's predecessor, the Financial Services Authority. At December 31, 2025 and 2024, GAMCO Asset Management (UK) Limited held total capital of £1.2 million and £1.1 million (\$1.6 million and \$1.4 million), respectively, and had a Financial Resources Requirement of £229 thousand and £71 thousand (\$308 thousand and \$89 thousand), respectively. These minimum requirements have consistently been met or exceeded.

### **13. Subsequent Events**

Subsequent events have been evaluated through the date the consolidated financial statements were available to be issued. There have been no subsequent events that require recognition or disclosure through the date the consolidated financial statements were issued, except as disclosed below.

On January 14, 2026, the GAMI Class B shares held by GGCP were transferred to a newly created LLC, GAMCO Gabelli Asset Management Company LLC (“GGAM”). GGAM is managed by GAMCO Investors Manager LLC and majority owned and controlled by Mr. Gabelli.

On February 3, 2026, the Board of Directors declared a regular quarterly dividend of \$0.10 per share to all shareholders of Class A Stock and Class B Stock, payable on March 31, 2026 to shareholders of record on March 17, 2026.

From January 1, 2026 to March 23, 2026, the Company repurchased 444,863 shares of GAMI Class A Stock at an average price of \$24.97 per share for an aggregate purchase price of approximately \$11.1 million. As a result, the Company had 654,217 shares remaining under its existing share repurchase authorization at March 23, 2026.

## MANAGEMENT'S DISCUSSION AND ANALYSIS

*The following discussion and analysis of our financial condition and results of operations should be read in conjunction with the consolidated financial statements and the notes thereto included in "Financial Statements and Supplementary Data." This discussion contains forward-looking statements and involves numerous risks and uncertainties, including, but not limited to those described in Part C of this Annual Report "Risk Factors." Our actual results could differ materially from those anticipated by such forward-looking statements due to factors discussed under "Risk Factors" and "Cautionary Statement Regarding Forward-Looking Statements" appearing elsewhere in this Annual Report.*

### OVERVIEW

Gabelli (OTCQX: GAMI), established in 1977 and incorporated under the laws of Delaware, is a widely-recognized provider of investment advisory services to 27 open-end funds, 14 closed-end funds, 8 actively managed ETFs, one SICAV, and approximately 1,900 Institutional and PWM investors principally in the U.S. The Company's revenues are based primarily on the levels of AUM and fees associated with our various investment products.

In 1977, Gabelli launched its well-known All Cap Value equity strategy, Gabelli Value, in a separate account format and in 1986 entered the mutual fund business. Today, Gabelli offers a diverse set of client solutions across asset classes (e.g. Equities, Debt Instruments, Convertibles, non-market correlated Merger Arbitrage), regions, market capitalizations, sectors (e.g. Gold, Utilities) and investment styles (e.g. Value, Growth). Gabelli serves a broad client base, including institutions, intermediaries, offshore investors, private wealth, and direct retail investors.

The investment advisory business is conducted principally through the following subsidiaries: Gabelli Funds (open-end funds, closed-end funds, actively managed ETFs, and SICAV) and GAMCO Asset (Institutional and PWM). The distribution of open-end funds and actively managed ETFs are conducted through G.distributors, the Company's broker-dealer subsidiary.

On May 1, 2025, Gabelli completed the acquisition of the management contracts of the 4 Gabelli-Keeley Funds and approximately 500 Gabelli-Keeley SMAs from Keeley. The Chicago-based Keeley research, portfolio management, and client service teammates have joined Gabelli and continue to manage and service these assets totaling approximately \$1.0 billion. Gabelli Funds manages the Gabelli-Keeley Funds, including Keeley Small Cap Dividend Value Fund, Keeley Small-Mid Cap Value Fund, Keeley Mid Cap Dividend Value Fund, and Keeley Small Cap Fund (the "Funds"), as well as the Keeley Dividend ETF (KDVD) launched in December 2025, and GAMCO Asset manages the Gabelli-Keeley SMAs.

### 2025 Business and Investment Highlights

- We hosted our 35th Annual Pump, Valve & Water Systems Symposium on February 27th. The symposium focused on themes crucial to this industry, including infrastructure spending, resource security, conservation, and M&A.
- On March 20th, we hosted our 16th Annual Specialty Chemicals Symposium. The symposium featured presentations from senior management of leading specialty chemicals companies, with a focus on pricing power, margin recovery, interest rates, destocking, global supply chain, global demand trends, and the M&A environment.
- We hosted the 11th Annual Waste & Environmental Services Symposium on April 3rd.
- On May 2nd, GAMCO hosted its 16th annual Omaha Research Trip in conjunction with the Berkshire Hathaway Annual Meeting. This Value Investor Conference attracted a record number of participants with Gabelli portfolio managers anchoring panels with noted Berkshire experts and regional CEOs.
- On May 15th and 16th, we hosted our 40th Gabelli client meeting in New York City. We presented our annual Gabelli Prize in honor of Graham & Dodd, Murray, and Greenwald for Value Investing to Jennifer A. Wallace, the founding partner of Summit Street Capital Management, LLC .
- On June 5th, we hosted the 17th Annual Media & Entertainment Symposium highlighted by a sports investing panel.
- We hosted the 31st Annual Aerospace & Defense Symposium on September 4th. The conference featured presentations by senior management of eighteen companies operating in the aerospace eco-system.
- On September 17th, GAMCO hosted its 3rd annual PFAS Symposium featuring presentations from regulators, the industry association and management from private and public companies.

- We hosted the 49th Automotive Aftermarket Symposium on November 3rd and 4th. The symposium featured presentations from senior management of leading automotive and trucking companies, with a lineup that enabled investors to understand ever-changing dynamics within the automotive industry.
- On November 14th, GAMCO hosted its 7th annual Healthcare Symposium which covered the future of multi-cancer screening, empowering beneficiaries through consumerism, developments for aging in place, and vaccine access and development.

#### **Subsequent to the end of 2025:**

- On February 26th, we hosted our 36th Annual Pump, Valve & Water Systems Symposium. The symposium focused on themes crucial to this industry, including infrastructure spending, resource security, conservation, and M&A.

#### ***Giving Back to Society – \$82 Million Since IPO***

On August 6, 2024, the Board of Directors authorized the creation of a private foundation, the Gabelli Funds Foundation, Inc, headquartered in Reno, Nevada, to continue our charitable giving program with an initial contribution of \$5 million. On November 7, 2025, Gabelli contributed \$2.5 million to its charitable foundation.

Since our IPO in February 1999, our firm’s combined charitable donations total approximately \$82 million, including \$48 million through the shareholder designated charitable contribution program and the \$7.5 million to the newly created private foundation. Since its inception in 2013, Gabelli shareholders have designated charitable gifts to approximately 350 charitable organizations.

#### ***Shareholder Compensation and Initiatives***

During 2025 and 2024, we returned \$29.6 million and \$106.4 million, respectively, of our earnings to shareholders through dividends and stock repurchases, including a total of \$0.34 and \$0.16 per share, respectively, in regular quarterly cash dividends totaling \$7.6 million and \$3.8 million, respectively. During 2024, the Company declared special dividends of \$2.20 per share to shareholders of Class A Stock and Class B Stock totaling \$53.4 million.

Through our Stock Repurchase Program, including routine open market purchases under Rules 10b5-1 and 10b-18 of the Securities Exchange Act of 1934, as amended and opportunistic private transactions, we repurchased 913,891 shares and 1,975,914 shares in 2025 and 2024, respectively, for approximately \$22.0 million and \$49.2 million, respectively, or \$24.06 per share and \$24.86 per share, respectively. At December 31, 2025, the total shares available under the Stock Repurchase Program for Class A Stock to be repurchased in the future were 1,099,080. The Stock Repurchase Program is not subject to an expiration date.

#### **Assets Under Management**

AUM was \$34.9 billion as of December 31, 2025, an increase of \$3.2 billion, or 10.1%, from the December 31, 2024 AUM of \$31.7 billion. The activity for 2025 consisted of \$5.0 billion of market appreciation offset by net cash outflows of \$1.2 billion and recurring distributions, net of reinvestments, from the Funds of \$613 million. Average total AUM was \$33.4 billion in 2025 versus \$31.5 billion in 2024, an increase of 6.0%.

We earn incentive fees for certain institutional client assets, assets attributable to certain preferred issues for our closed-end Funds, our GDL Fund (NYSE: GDL), and the Gabelli Merchant Partners Plc (LSE: GMP). As of December 31, 2025, assets with incentive based fees were \$0.2 billion, unchanged from December 31, 2024. The majority of these assets have calendar year-end measurement periods; therefore, our incentive fees are primarily recognized in the fourth quarter when the uncertainty is removed at the end of the annual measurement period.

#### **RESULTS OF OPERATIONS**

Investment advisory and incentive fees, which are based on the amount and composition of AUM in our Funds and Institutional and PWM accounts, and distribution fees represent our largest source of revenues. In addition to the general level and trends of the stock market, growth in revenues depends on good investment performance, which influences the value of existing AUM as well as contributes to higher investment and lower redemption rates and facilitates the ability to attract additional investors while maintaining current fee levels. Growth in AUM is also dependent on being able to access various distribution channels, which is usually based on several factors, including performance and service. A majority of our cash inflows to mutual fund products have come through third party distribution programs, including no-transaction fee programs. We have also been engaged to act as a sub-advisor for other much larger financial

services companies with much larger sales distribution organizations. These sub-advisory clients are subject to business combinations that may result in the termination of the relationship. The loss of a sub-advisory relationship could have a significant impact on our financial results in the future.

Advisory fees from the Funds and sub-advisory accounts are computed daily or weekly based on average net assets. Advisory fees from Institutional and PWM clients are generally computed quarterly based on account values as of the end of the preceding quarter. These revenues are based on AUM, which is highly correlated to the stock market and can vary in direct proportion to movements in the stock market and the level of sales compared with redemptions, financial market conditions, and the fee structure for AUM. Revenues derived from the equity-oriented portfolios generally have higher advisory fee rates than fixed income portfolios.

We also receive incentive fees from certain Institutional and PWM clients, which are based upon meeting or exceeding a specific benchmark index or indices. These fees are recognized at the end of the stipulated contract period, which may be quarterly or annually, for the respective account. Advisory fees on assets attributable to certain of the closed-end preferred shares are earned at year-end if the total return to common shareholders of the closed-end fund for the calendar year exceeds the dividend rate of the preferred shares. These fees are recognized at the end of the measurement period.

Distribution fees and other income primarily include distribution fee revenue earned in accordance with Rule 12b-1 of the Company Act, along with sales charges and underwriting fees associated with the sale of the mutual funds plus other revenues. Distribution fees fluctuate based on the level of AUM and the amount and type of mutual funds sold directly by G.distributors or through various distribution channels.

Compensation costs include variable and fixed compensation and related expenses paid to officers, portfolio managers, sales, trading, research, and all other professional teammates. Variable compensation paid to sales teammates and portfolio management generally represents 40% of revenues and is the largest component of total compensation costs. Distribution costs include marketing, product distribution, and promotion costs. The management fee is incentive-based and entirely variable compensation in the amount of 10% of the aggregate pre-tax profits, which is paid to Mr. Gabelli or his designee for acting as CEO pursuant to his 2008 Employment Agreement so long as he is an executive of GAMI and devotes the substantial majority of his working time to the business. Other operating expenses include general and administrative operating costs.

Non-operating income/(loss) includes gain/(loss) from investments, net (which includes both realized and unrealized gains and losses from securities), interest and dividend income, interest expense, and shareholder-designated charitable contribution. The gain/(loss) from investments, net is derived from our proprietary investment portfolio consisting of various public investments.

The following table (in thousands, except per share data) and discussion of our results of operations are based upon data derived from the consolidated statements of income contained in our consolidated financial statements and should be read in conjunction with those statements included earlier in Part D of this Annual Report.

	<b>Years Ended December 31,</b>	
	<b>2025</b>	<b>2024</b>
<b>Revenues</b>		
Investment advisory and incentive fees	\$ 230,254	\$ 215,093
Distribution fees and other income	14,919	16,304
<b>Total revenues</b>	<b>245,173</b>	<b>231,397</b>
<b>Expenses</b>		
Compensation	117,964	108,965
Management fee	8,482	9,016
Distribution costs	22,751	23,326
Other operating expenses	23,049	20,331
<b>Total expenses</b>	<b>172,246</b>	<b>161,638</b>
Operating income	72,927	69,759
<b>Non-operating income</b>		
Gain from investments, net	7,346	5,745
Interest and dividend income	7,425	11,796
Gain on extinguishment of liabilities	2,893	-
Interest expense	(1,235)	(1,155)
Charitable giving contribution	(2,500)	(5,000)
<b>Total non-operating income</b>	<b>13,929</b>	<b>11,386</b>
Income before income taxes	86,856	81,145
Provision for income taxes	16,107	18,215
<b>Net income</b>	<b>\$ 70,749</b>	<b>\$ 62,930</b>
<b>Earnings per share:</b>		
Basic	\$ 3.17	\$ 2.58
Diluted	\$ 3.17	\$ 2.58

### *Year Ended December 31, 2025 Compared to Year Ended December 31, 2024*

#### **Overview**

Net income for 2025 was \$70.7 million, or \$3.17 per fully diluted share, versus \$62.9 million, or \$2.58 per fully diluted share, in 2024. The year-to-year comparison was impacted by higher revenues and lower income taxes, offset partially by higher expenses and lower interest and dividend income.

#### **Revenues**

Total revenues were \$245.2 million in 2025, \$13.8 million or 6.0% higher than the total revenues of \$231.4 million in 2024. The change in total revenues by component was as follows (dollars in millions):

	<b>Years Ended December 31,</b>		<b>Increase (decrease)</b>	
	<b>2025</b>	<b>2024</b>	<b>\$</b>	<b>%</b>
Investment advisory	\$ 227.8	\$ 215.0	\$ 12.8	6.0
Incentive fees	2.5	0.1	2.4	2,400.0
Distribution fees and other income	14.9	16.3	(1.4)	(8.6)
<b>Total revenues</b>	<b>\$ 245.2</b>	<b>\$ 231.4</b>	<b>\$ 13.8</b>	<b>6.0</b>

Investment advisory fees excluding incentive fees, which comprised 92.9% of total revenues in 2025, are directly influenced by the level and mix of average AUM. Average total AUM increased 6.0% to \$33.4 billion in 2025 as compared to \$31.5 billion in 2024.

Average equity AUM increased 5.7% to \$27.8 billion in 2025 from \$26.3 billion in 2024, primarily from market appreciation slightly offset by net outflows and recurring distributions, net of reinvestments, from the Funds. Incentive fees, which comprised \$2.5 million of total revenues in 2025, result from our ability to either generate an absolute return in a portfolio or meet or exceed a specific benchmark index or indices and can vary significantly from one period to another. Incentive fees were higher in 2025 as the portfolios did exceed their respective benchmarks as compared to 2024.

Fund revenues increased \$12.5 million or 8.1%, to \$167.0 million, driven by higher average Fund AUM. Revenue from open-end Funds increased \$6.0 million, or 7.1%, to \$90.1 million from the prior year as average equity open-end Funds AUM increased \$0.6 billion, or 7.3%, to \$8.8 billion from the \$8.2 billion in 2024. Closed-end fund revenues increased \$6.5 million, or 9.2%, to \$76.9 million from the prior year and were comprised of an increase of \$4.1 million in investment advisory fees attributable to higher average AUM and an increase of \$2.4 million in incentive fees on certain closed-end fund AUM. Revenue from Institutional and PWM accounts, which are generally billed on beginning quarter AUM, increased \$2.6 million, or 4.3%, to \$63.2 million principally due to higher billable AUM levels throughout the course of 2025. In 2025, average AUM in our equity Institutional and PWM business increased \$0.4 billion, or 3.7%, for the year to \$11.3 billion. SICAV revenues were \$38 thousand in 2025, with no incentive fees, up from \$19 thousand, with no incentive fees, in 2024.

Distribution fees and other income decreased \$1.4 million, or 8.6%, to \$14.9 million in 2025 from \$16.3 million in 2024. Distribution fees were \$12.9 million in 2025 versus \$14.4 million in 2024 while other income was \$2.0 million in 2025 versus \$1.9 million in 2024.

### **Expenses**

Total compensation costs, which are largely variable in nature, increased \$9.0 million, or 8.3%, to \$118.0 million in 2025 from \$109.0 million in 2024. Variable compensation costs, which are tied to revenues and principally consist of portfolio manager and relationship manager fees, increased \$5.5 million to \$66.5 million in 2025 from \$61.0 million in 2024 and increased as a percent of revenues to 27.1% in 2025 from 26.4% in 2024. The increase in variable compensation primarily resulted from higher AUM and revenue and the decrease of waived compensation by the Co-CEO, in his capacity as a portfolio manager and a relationship manager, to \$8.2 million in 2025, as compared to \$8.4 million in 2024. During 2025 and 2024, the Co-CEO elected to irrevocably waive all of his compensation for a total of three months in each year (March 1, 2025 to May 31, 2025 and August 1, 2024 to October 31, 2024, respectively). Fixed compensation costs increased to \$44.0 million in 2025 from \$39.4 million in 2024. Stock based compensation was \$7.5 million in 2025, a decrease of \$1.0 million, as compared to \$8.5 million in 2024, primarily from mark to market adjustments and \$2.20 per share in special dividends declared during 2024.

In 2025, management fee expense decreased to \$8.5 million versus \$9.0 million in 2024. Management fee expense is incentive-based and entirely variable in the amount of 10% of the aggregate pre-tax profits, which is paid to Mr. Gabelli (or his designee) in accordance with his 2008 Employment Agreement. The decrease in management fee resulted from Mr. Gabelli electing to waive his Incentive Management Fee in the amount of \$1.1 million for the period of December 1, 2025 to December 31, 2025.

Distribution costs, which include marketing, promotion, and distribution costs decreased \$0.5 million, or 2.1%, to \$22.8 million in 2025 from \$23.3 million in 2024.

Other operating expenses were \$23.0 million in 2025 compared to \$20.3 million in 2024, an increase of \$2.7 million or 13.3%, primarily from increased subadvisory fees totaling \$1.4 million in 2025 as compared to \$0.4 million in 2024, increased legal fees totaling \$1.0 million in 2025 compared to \$0.5 million in 2024 and an increase of amortization expense related to the customer relationships acquired as part of the Keeley transaction totaling \$0.4 million.

### **Operating income**

Operating income increased \$3.1 million, or 4.4%, to \$72.9 million for 2025, versus \$69.8 million in 2024. This increase in 2025 as compared to 2024 primarily resulted from higher advisory fee revenue of \$12.8 million and higher incentive fees of \$2.4 million offset by higher compensation expenses of \$9.0 million and other operating expenses of \$2.7 million. Operating margin was 29.7% for the year ended December 31, 2025, versus 30.1% in the prior year.

Operating income before management fee was \$81.4 million for the year ended of 2025, versus \$78.8 million in the prior year. Operating margin before management fee was 33.2% in 2025 versus 34.0 % in 2024. The reconciliation of operating income before management fee and operating margin before management fee, both of which are non-GAAP measures, to their respective GAAP measures is provided at the end of this section.

### **Non-operating income/(loss)**

Total non-operating gain was \$13.9 million for the year ended December 31, 2025, compared to a gain of \$11.4 million in 2024. This was comprised of net gain from investments of \$7.3 million in 2025 as compared to a net gain from investments of \$5.7 million in 2024; interest and dividend income of \$7.4 million in 2025 versus \$11.8 million in 2024; and interest expense of \$1.2 million in 2025 as compared to \$1.2 million in 2024. In addition, 2025 included a \$2.5 million charitable giving contribution to the firm's private foundation to support our ongoing charitable giving program compared to \$5.0 million in 2024. During the year ended December 31, 2025, the Company recognized a gain of approximately \$2.9 million related to the reversal of certain accrued distribution-related liabilities. These liabilities were reversed after the applicable statute of limitations expired and the Company determined the obligations were no longer legally enforceable.

The effective tax rate was 18.5% for the year ended December 31, 2025 versus 22.4% for the year ended December 31, 2024.

### **Non-GAAP information and reconciliation**

Operating income before management fee expense is used by management for purposes of evaluating its business operations. We believe this measure is useful in illustrating the operating results of the Company as management fee expense is based on pre-tax income before management fee expense, which includes non-operating items including gain/(loss) from investments, net from our proprietary investment portfolio, interest and dividend income, interest expense, and shareholder-designated charitable contribution. We believe that an investor would find this useful in analyzing our business operations without the impact of the non-operating items such as trading and investment portfolios, interest and dividend income, interest expense, or shareholder-designated charitable contribution.

Reconciliation of GAAP financial measures to non-GAAP (in thousands):

	<b>2025</b>	<b>2024</b>
Revenues, U.S. GAAP basis	\$ 245,173	\$ 231,397
Operating income, U.S. GAAP basis	72,927	69,759
Add back: management fee expense	8,482	9,016
Operating income before management fee	\$ 81,409	\$ 78,775
Operating margin	29.7%	30.1%
Operating margin before management fee	33.2%	34.0%

### **Seasonality and Inflation**

We do not believe our operations are subject to significant seasonal fluctuations. We do not believe inflation will significantly affect our compensation costs, as they are substantially variable in nature. However, the rate of inflation may affect our expenses, such as information technology and occupancy costs. To the extent inflation results in rising interest rates and has other effects upon the securities markets, it may adversely affect our financial condition and results of operations by reducing our AUM, revenues, or otherwise.

### **LIQUIDITY AND CAPITAL RESOURCES**

Our principal assets are highly liquid in nature and consist of cash and cash equivalents, U.S. Treasury Bills, short-term investments, and securities held for investment purposes. Cash and cash equivalents are comprised primarily of a 100% U.S. Treasury money market fund managed by Gabelli (The Gabelli U.S. Treasury Money Market Fund).

Summary cash flow data for the years ended December 31, 2025 and 2024 was as follows (in thousands):

	<b>Years Ended December 31,</b>	
	<b>2025</b>	<b>2024</b>
<b>Cash flows provided by (used in):</b>		
Operating activities	\$ 33,173	\$ 72,469
Investing activities	(3,747)	(10,134)
Financing activities	(30,326)	(106,860)
Decrease in cash and cash equivalents	(900)	(44,525)
Effect of exchange rates on cash and cash equivalents	103	(22)
Net decrease in cash and cash equivalents	(797)	(44,547)
Cash and cash equivalents at beginning of year	17,254	61,801
Cash and cash equivalents at end of year	<u>\$ 16,457</u>	<u>\$ 17,254</u>
Short-term investments in U.S. Treasury Bills	\$ 49,463	\$ 99,216
Investments in fixed maturity securities	8,072	5,657
Cash, cash equivalents, short-term investments in U.S. Treasury Bills, and investments in fixed maturity securities	<u>\$ 73,992</u>	<u>\$ 122,127</u>

Cash and liquidity requirements have historically been met through cash generated by operating income and our borrowing capacity.

On February 5, 2025, the Company announced that the Co-CEO elected to irrevocably waive all of his Portfolio and Relationship compensation that he would otherwise have been entitled to for the period of March 1, 2025 to May 31, 2025. On July 15, 2024, the Company announced that the Co-CEO elected to irrevocably waive all of his Portfolio and Relationship compensation that he would otherwise have been entitled to for the period of August 1, 2024 to October 31, 2024. As a result of these waivers, there was \$8.2 million and \$8.4 million of compensation waived by the Co-CEO for the years ended December 31, 2025 and 2024, respectively. On November 7, 2025, the Company announced that the Co-CEO elected to irrevocably waive all of his Incentive Management Fee that he would otherwise have been entitled to for the period of December 1, 2025 to December 31, 2025. As a result of this waiver, there was \$1.1 million of management fee expense waived for the year ended December 31, 2025. There was no Incentive Management Fee waived in 2024.

As of December 31, 2025, we had cash, cash equivalents, short-term investments in U.S. Treasury Bills, and investments in fixed maturity securities of \$74.0 million, a decrease of \$48.1 million from the prior year-end balance of \$122.1 million primarily due to the Company's investing and financing activities, partially offset by the Company's operating activities, as described below. There was no debt as December 31, 2025.

Net cash provided by operating activities was \$33.2 million in 2025, as compared to \$72.5 million provided by operating activities in 2024. Cash flows from operating activities primarily consisted of net income adjusted for certain non-cash items and changes in assets and liabilities.

Net cash used in investing activities in 2025 was \$3.7 million relating to net purchases of securities, as compared to \$10.1 million used in 2024, relating to net purchases of securities. As of December 31, 2025, we had total debt investments, including short-term investments in U.S. Treasury Bills and investments in fixed maturity securities, of \$57.5 million, a decrease in total debt investments of \$47.4 million from the prior year-end balance of \$104.9 million. As of December 31, 2025, we had total equity investments of \$121.5 million, an increase in total equity investments of \$60.8 million from the prior year-end balance of \$60.7 million.

Net cash used in financing activities in 2025 was \$30.3 million, including \$22.2 million paid for the purchase of treasury stock, \$7.6 million paid in dividends, and \$0.6 million paid on the principal portion of lease liabilities, as compared to \$106.9 million used in 2024, including \$49.2 million paid for the purchase of treasury stock, \$57.2 million paid in dividends, and \$0.5 million paid on the principal portion of lease liabilities.

The Company's principal contractual commitments include payments of lease obligations and earnout payments to Teton and Wilen Investment Management Corp. ("Wilen"). Under the terms of the lease of our Rye, New York office, we are obligated to make minimum total payments of \$3.8 million through December 2028. We are obligated to make future payments under various contracts such as finance and operating lease agreements of \$7.6 million. Gabelli's contingent consideration earnouts are estimated to total approximately

\$5.1 million (\$4.0 million present value) to Teton with annual payments through May 1, 2030 and \$3.0 million (\$1.6 million present value) to Wilen with quarterly payments through August 4, 2034.

We also had a net liability for unrecognized tax benefits related to uncertain tax positions of \$10.4 million, including penalties and interest related to tax uncertainties in income taxes of approximately \$3.5 million, some or all of which could result in future cash payments to various taxing authorities. At this time, we are unable to estimate the timing and amount of any future cash outflows related to these uncertain tax positions. As such amounts above, both individually and in the aggregate, can be satisfied with cash on hand and investments, we do not believe they represent a material liquidity risk to the company. We do not invest in any other off-balance sheet vehicles that provide financing, liquidity, market, or credit risk support or engage in any leasing activities that expose us to any liability that is not reflected on the consolidated financial statements.

We have one broker-dealer subsidiary, G.distributors, which is subject to certain net capital requirements. G.distributors computes its net capital under the alternative method permitted under SEC Rule 15c3-1 under the Securities Exchange Act of 1934, as amended, which requires minimum net capital of the greater of \$250,000 or 2% of the aggregate debit items. The minimum net capital requirement was \$250,000 for the broker-dealer at December 31, 2025 and 2024. On February 25, 2025 and December 29, 2025, GAMCO Asset made a contribution to G.distributors of \$2.5 million. At December 31, 2025 and 2024, G.distributors had net capital, as defined in the Rule, of approximately \$2.5 million and \$0.7 million, respectively, exceeding the regulatory requirement by approximately \$2.2 million and \$0.5 million, respectively.

Our subsidiary, GAMCO Asset Management (UK) Limited, is authorized and regulated by the FCA. At December 31, 2025 and 2024, GAMCO Asset Management (UK) Limited held total capital of £1.2 million and £1.1 million (\$1.6 million and \$1.4 million), respectively, and had a Financial Resources Requirement of £229 thousand and £71 thousand (\$308 thousand and \$89 thousand), respectively. We have consistently met or exceeded these minimum requirements.

## OUTSIDE PROVIDERS

**The name, address, telephone number, and email address of outside providers that advise the issuer on matters relating to operations, business development, and disclosure**

1. Investment Banker: None
2. Promoter: None
3. Securities Counsel: Olshan Frome Wolosky LLP  
1325 Avenue of the Americas  
New York, NY 10019  
Tel: +1 (212) 451-2300  
Fax: +1 (212) 451-2222  
Email: info@olshanlaw.com  
www.olshanlaw.com
4. Auditor: Deloitte & Touche LLP (“Deloitte”)  
695 East Main Street  
Stamford, CT 06901-2150  
Tel: +1 (203) 708-4000  
Fax: +1 (203) 705-5455  
www.deloitte.com

Preparation of GAMI’s consolidated financial statements is the responsibility of management. Deloitte is responsible for expressing an opinion on the consolidated financial statements as of December 31, 2025 and 2024 and for each of the three years in the period ended December 31, 2025 based on their audits. During 2025 and 2024, we incurred audit fees from Deloitte of \$1.3 million related to the audits of the financial statements of GAMI. During 2025 and 2024, we did not incur any other audit-related or other fees from Deloitte.

Deloitte is registered with the PCAOB (ID: 34).

5. Public Relations Consultant: Zito Partners
6. Investor Relations Consultant: None
7. Any Other Advisor: None

**PART E: ISSUANCE HISTORY**

**List of the Securities Offerings and Shares Issued for Services in the Past Two Years**

There were no Class A Stock, Class B Stock, or options issued during the fiscal years 2025 and 2024.

## PART F: EXHIBITS

### (a) List of documents filed as part of this report:

(1) Consolidated financial statements and the reports of the independent registered public accounting firm are included herein:

See index on page 32.

(2) List of exhibits:

The agreements included or incorporated by reference as exhibits to this Annual Report contain representations and warranties by each of the parties to the applicable agreement. These representations and warranties were made solely for the benefit of the other parties to the applicable agreement and (i) were not intended to be treated as categorical statements of fact, but rather as a way of allocating the risk to one of the parties if those statements prove to be inaccurate; (ii) may have been qualified in such agreement by disclosures that were made to the other party in connection with the negotiation of the applicable agreement; (iii) may apply contract standards of “materiality” that are different from “materiality” under the applicable securities laws; and (iv) were made only as of the date of the applicable agreement or such other date or dates as may be specified in the agreement.

The Company acknowledges that, notwithstanding the inclusion of the foregoing cautionary statements, it is responsible for considering whether additional specific disclosures of material information regarding material contractual provisions are required to make the statements in this report not misleading.

Purchases of equity securities by the issuer and affiliated purchasers were included in Part B of this Annual Report.

### **Exhibit Number**

### **Description of Exhibit**

- |     |  |
|-----|--|
| 2.1 | Separation and Distribution Agreement, dated November 30, 2015, by and between GAMCO Investors, Inc. and Associated Capital Group, Inc. (Incorporated by reference to Exhibit 2.1 to the Company’s Form 8-K dated November 30, 2015 filed with the SEC on December 4, 2015). |
| 3.1 | Amended and Restated Certificate of Incorporation of the Company (Incorporated by reference to Exhibit 3.1 to the Company’s Form 8-K dated November 20, 2013 filed with the SEC on November 22, 2013).   |
| 3.2 | Certificate of Amendment of the Amended and Restated Certificate of Incorporation of GAMCO Investors, Inc. (Incorporated by reference to Exhibit B of the Company’s definitive proxy statement on Schedule 14A filed with the SEC on April 29, 2020).                        |
| 3.3 | Certificate of Amendment of the Amended and Restated Certificate of Incorporation of the Company (Incorporated by reference to Appendix A to the Company’s definitive proxy statement on Schedule 14A filed with the SEC on July 2, 2021).                                   |
| 3.4 | Amended and Restated Bylaws of the Company (Incorporated by reference to Exhibit 3.2 to the Company’s Report on Form 8-K dated November 20, 2013 filed with SEC on November 22, 2013).   |
| 3.5 | Amendment No. 1 to Amended and Restated Bylaws of the Company (Incorporated by reference to Exhibit 3.3 to the Company’s Report on Form 8-K dated September 23, 2014 filed with the SEC on September 26, 2014).  |
| 3.6 | Amendment No. 2 to Amended and Restated Bylaws of the Company (Incorporated by reference to Exhibit 3.4 to the Company’s Report on Form 8-K dated February 20, 2020 filed with the SEC on February 21, 2020).  |

- 3.7 Certificate of Amendment of the Amended and Restated Certificate of Incorporation of the Company (Incorporated by reference to Exhibit A to the Company's Proxy Statement filed with the OTC on June 25, 2024).
- 4.1 Form of Common Stock Certificate (Incorporated by reference to Exhibit 4.1 to the Company's Report on Form 8-K dated November 20, 2013 filed with the SEC on November 22, 2013).
- 4.2 Indenture, dated as of June 14, 2021, by and between the Company and Computershare Trust Company, N.A. as trustee (Incorporated by reference to Exhibit 4.1 to the Company's Report on Form 8-K dated June 14, 2021 filed with the SEC on June 15, 2021).
- 4.3 Form of 2-Year Puttable Subordinated Notes due 2023 (included in Exhibit 4.2) (Incorporated by reference to Exhibit 4.1 to the Company's Report on Form 8-K dated June 14, 2021 filed with the SEC on June 15, 2021).
- 4.4 Description of the Registrant's Securities Registered Pursuant to Section 12 of the Securities Exchange Act of 1934 (Incorporated by reference to Exhibit 4.9 to the Company's Report on Form 10-K filed with the SEC on March 6, 2020).
- 10.1 Tax Indemnification Agreement, dated February 1999, by and between the Company and Gabelli Funds, Inc. (Incorporated by reference to Exhibit 10.2 to Amendment No. 3 to the Company's Registration Statement on Form S-1 (File No. 333-51023) filed with the SEC on January 29, 1999).
- 10.2 The Company's 2002 Stock Award and Incentive Plan (Incorporated by reference to Exhibit A to the Company's definitive proxy statement on Schedule 14A filed with the SEC on April 30, 2002). \*
- 10.3 First Amendment to the Company's 2002 Stock Award and Incentive Plan (Incorporated by reference to Annex D to the Company's definitive proxy statement on Schedule 14A filed with the SEC on October 30, 2013).
- 10.4 Second Amendment to the Company's 2002 Stock Award and Incentive Plan (Incorporated by reference to Exhibit A to the Company's definitive proxy statement on Schedule 14A filed with the SEC on April 21, 2016).
- 10.5 Third Amendment to the Company's 2002 Stock Award and Incentive Plan (Incorporated by reference to Exhibit A to the Company's definitive proxy statement on Schedule 14A filed with the SEC on April 12, 2017).
- 10.6 Employment Agreement, dated February 6, 2008, by and between the Company and Mario J. Gabelli (Incorporated by reference to Exhibit 10.1 to the Company's Report on Form 8-K dated February 6, 2008 filed with the SEC on February 7, 2008).
- 10.7 Service Mark and Name License Agreement, dated November 30, 2015, by and between the Company and Associated Capital Group, Inc. (Incorporated by reference to Exhibit 10.1 to the Company's Report on Form 8-K dated November 30, 2015 filed with the SEC on December 4, 2015).
- 10.8 Transitional Administrative and Management Services Agreement, dated November 30, 2015, by and between the Company and Associated Capital Group, Inc. (Incorporated by reference to Exhibit 10.2 to the Company's Report on Form 8-K dated November 30, 2015 filed with the SEC on December 4, 2015).

- 10.9 Tax Indemnity and Sharing Agreement, dated November 30, 2015, by and between the Company and Associated Capital Group, Inc. (Incorporated by reference to Exhibit 10.4 to the Company's Report on Form 8-K dated November 30, 2015 filed with the SEC on December 4, 2015).
- 10.10 License Agreement, dated February 9, 1999, by and among the Company, Gabelli International Limited, Gabelli International II Limited, Gabelli Fund, LDC, and Gabelli Performance Partnership, L.P. and MJG Associates, Inc. (Incorporated by reference to Exhibit 10.14 to the Company's Form 10-K for the year ended December 31, 2015 filed with the SEC on March 15, 2016).
- 10.11 GAMCO Investors, Inc. Deferred Compensation Plan (Incorporated by reference to Exhibit 3.1 to the Company's Quarterly Report filed with the OTC on November 7, 2022).

**Subsidiaries of GAMCO Investors, Inc.**

The following table lists the direct and indirect subsidiaries of the Company.

<b>Name</b>	<b>Jurisdiction of Incorporation or Organization</b>
Gabelli Funds, LLC (100%-owned by the Company)	New York
GAMCO Asset Management Inc. (100%-owned by the Company)	New York
Gabelli Fixed Income, Inc. (100%-owned by the Company)	New York
GAMCO Asset Management (UK) Limited (100%-owned by the Company)	United Kingdom
Gabelli Fixed Income L.L.C. (100%-owned by Gabelli Fixed Income, Inc.)	Delaware
GAMCO Acquisition LLC (100%-owned by the Company)	New York
Distributors Holdings, Inc. (100%-owned by GAMCO Asset Management Inc.)	Delaware
G.distributors, LLC (100%-owned by Distributors Holdings, Inc.)	Delaware
Gabelli Japan K.K. (100%-owned by the Company)	Japan
Nevada NJ Lat, LLC (100%-owned by the Company)	Nevada
Gabelli-Keeley, LLC (85%-owned by the Company)	Delaware

## CERTIFICATIONS

### **Certification by the co-principal executive officers**

We, Mario J. Gabelli and Douglas R. Jamieson, certify that:

1. We have reviewed this Annual Report of GAMCO Investors, Inc.;
2. Based on our knowledge, this Annual Report does not contain any untrue statement of a material fact or omit to state a material fact necessary to make the statements made, in light of the circumstances under which such statements were made, not misleading with respect to the period covered by this Annual Report; and
3. Based on our knowledge, the financial statements, and other financial information included or incorporated by reference in this Annual Report, fairly present in all material respects the financial condition, results of operations and cash flows of the issuer as of, and for, the periods presented in this Annual Report.

Date: March 23, 2026

/s/ Mario J. Gabelli

Name: Mario J. Gabelli

Title: Co-Chief Executive Officer (Co-Principal Executive Officer)

/s/ Douglas R. Jamieson

Name: Douglas R. Jamieson

Title: Co-Chief Executive Officer (Co-Principal Executive Officer)

### **Certification by the principal financial officer**

I, Kieran Caterina, certify that:

1. I have reviewed this Annual Report of GAMCO Investors, Inc.;
2. Based on my knowledge, this Annual Report does not contain any untrue statement of a material fact or omit to state a material fact necessary to make the statements made, in light of the circumstances under which such statements were made, not misleading with respect to the period covered by this Annual Report; and
3. Based on my knowledge, the financial statements, and other financial information included or incorporated by reference in this Annual Report, fairly present in all material respects the financial condition, results of operations and cash flows of the issuer as of, and for, the periods presented in this Annual Report.

Date: March 23, 2026

/s/ Kieran Caterina

Name: Kieran Caterina

Title: Chief Accounting Officer (Principal Financial Officer)